

DELAWARE GEOLOGICAL SURVEY CARTOGRAPHIC INFORMATION CENTER

University of Delaware
Newark, Delaware 19716
302-451-8262
William S. Schenck, Coordinator

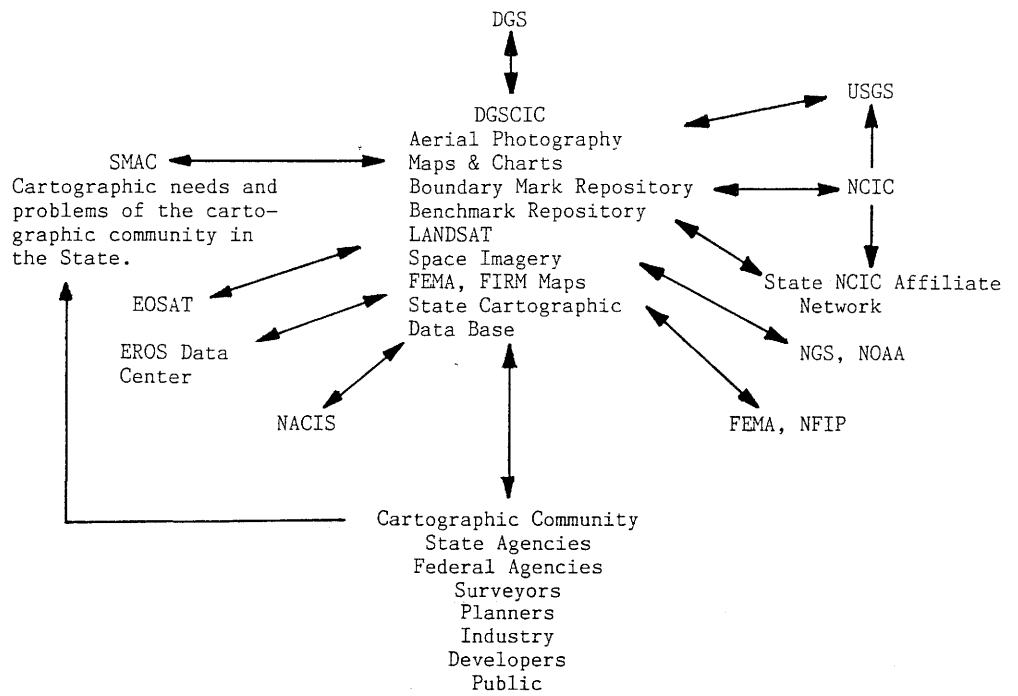
Information Series No. 1
May 1986

Do you have aerial photography showing the Hoopes Reservoir area before the dam was built? Where does one find all the aerial photography of a landfill site at a scale less than 1:400? How does one obtain a map covering the area of Taylor, Arizona? Where can I find a map of Cape Henlopen made before 1870? Where is the federal vertical benchmark nearest to Shaft Ox Corner, Delaware? These are examples of questions asked of the Delaware Geological Survey's Cartographic Information Center (DGSCIC).

The Center has made the DGS a focal point for questions concerning the availability of all types of aerial photography, thematic maps, planimetric maps, topographic maps, historic maps, LANDSAT imagery, space imagery, side looking aerial radar imagery (SLAR), and geodetic control. Sources of maps, charts, aerial photography, boundary mark information, and vertical geodetic control can be obtained for your area of interest within the State through the Center's computer-searchable data bases. In addition, through the Center's affiliation with the U. S. Geological Survey's National Cartographic Information Center (NCIC) in Reston, Virginia, we can locate all cartographic materials covering the United States produced by federal agencies.

The organization and interactions of the DGSCIC are shown on the chart above. The chart indicates the extensive cartographic network made up of federal, state, and professional organizations through which information flows. Also shown is the interaction of DGSCIC with Delaware's cartographic community.

ORGANIZATION AND INTERACTIONS OF THE DGSCIC



Explanation

DGS	- Delaware Geological Survey	NACIS	- North American Cartographic Information Society
DGSCIC	- Delaware Geological Survey-Cartographic Information Center	NCIC	- National Cartographic Information Center
EOSAT	- Earth Observation Satellite Company	NFIP	- National Flood Insurance Program
EROS	- Earth Resources Observation Systems	NGS	- National Geodetic Survey
FEMA	- Federal Emergency Management Agency	NOAA	- National Oceanic and Atmospheric Administration
FIRM	- Flood Insurance Rate Map	SMAC	- State Mapping Advisory Committee
USGS	- U. S. Geological Survey		

Place
Stamp
Here

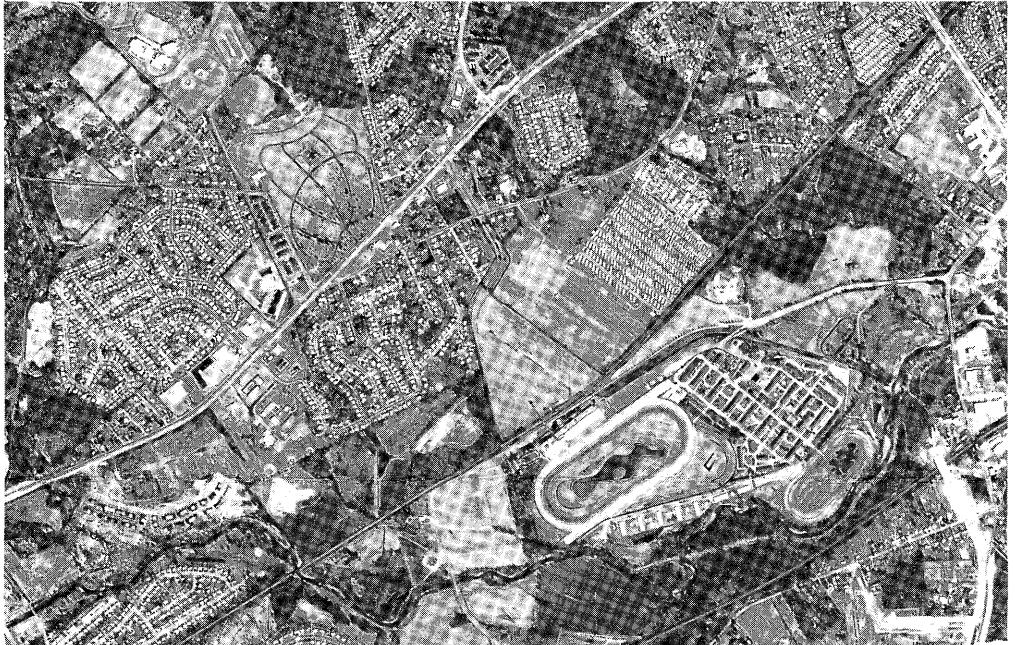
Delaware Geological Survey
Cartographic Information Center
University of Delaware
Newark, Delaware 19716

SERVICES

Many public resources exist; a major objective of the DGSCIC is to make them available to the users of such information. The DGSCIC can help you locate and order the following cartographic products. Those the DGSCIC can provide are starred (*).

Aerial Photography

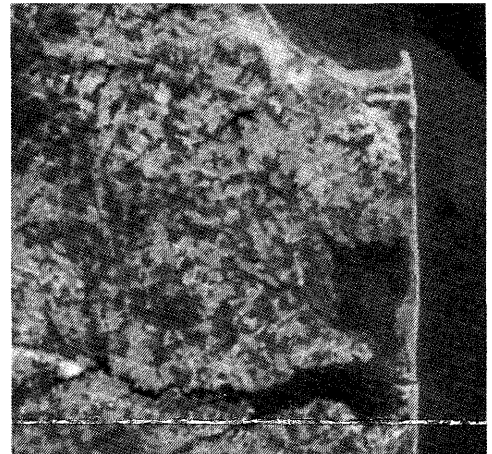
- Access to federal, State, and private sources through NCIC's Aerial Photography Summary Record System (APSR).
- Flight lines for National Ocean Service (NOS), National Aeronautics and Space Administration (NASA), and National High Altitude Photography (NHAP) (with order forms).
- * Computer searches and listings from the main aircraft accessions file at EROS Data Center for anywhere in the continental U. S.
- Agricultural Stabilization and Conservation Service photography.
- Side Looking Airborne Radar (SLAR).
- * Computer listing of photography over any area of Delaware from the statewide data base .
- * Coastal orthophotoquads in Delaware.
- * Reproducible film positives of quad-centered NHAP photography over most of the State between 1977-1982.



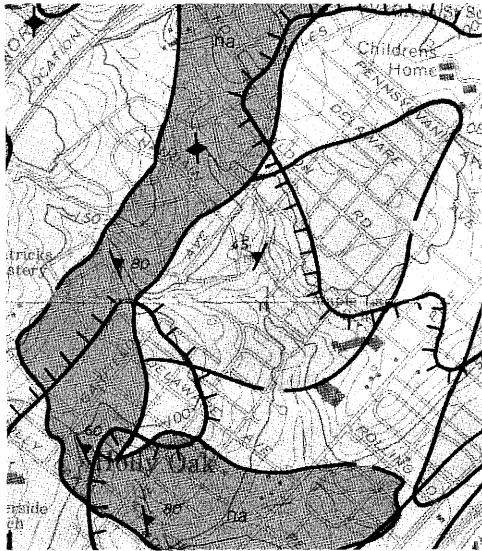
Portion of a National High Altitude Photography (NHAP) photo over the Newark area; scale 1:29,000.

Maps and Charts

- * Over the counter sales of USGS topographic maps of Delaware with the capability of ordering all other USGS maps.
- * All DGS maps and atlases.
- Thematic maps and atlases for the United States from federal and State agencies.
- * Computer listing from the statewide data base of maps for any area of Delaware.
- * Flood Prone Area maps.
- * Flood Insurance Rate Maps for Delaware communities and counties. (Repository of current maps kept at DGSCIC).
- Access to NCIC Map and Chart Information System.
- Historic and out-of-print USGS maps.
- NOAA marine and aeronautical charts.
- Map separates and composites of USGS topographic maps.



Portion of a LANDSAT image over coastal Delaware; scale 1:500,000.



Portion of the DGS Wilmington Area Geologic Map; scale 1:24,000.

Geodetic Control

- * Computer-searchable data base of all federal vertical control in Delaware with listings available.
- Current NGS horizontal control information on file.
- * Computer-searchable data base of information on the condition of Delaware's boundary marks (including Mason-Dixon monuments).



Portion of the Fairmount orthophotoquad; scale 1:25,000.

Space Imagery

- * Computer searches and listings from the main LANDSAT accessions file at EOSAT for images anywhere in the world from LANDSAT 1, 2, 3, 4, and 5.
- Large Format Camera Images of shuttle mission 41-G, October 1984.
- Manned space craft missions photography.
- * Ordering information and order forms for LANDSAT and other available space imagery.

NCIC State Affiliates

- * There are 43 State Affiliates linking the Nation to the NCIC. Address information is available from DGSCIC.

(tear along dotted line)

Please send me information on the following items:

- Aerial Photography
- Space Imagery
- NCIC State Affiliates

- Maps and Charts
- Geodetic Control
- Other _____

Send to:

Name Business Telephone

Address Apt. # Residence Telephone

City State Zip Code