

Figure 20. Elevation of the top of the Rancocas aquifer. The section near the top of the Rancocas aquifer includes sandier intervals of the Manasquan and Hornerstown Formations in some locations.

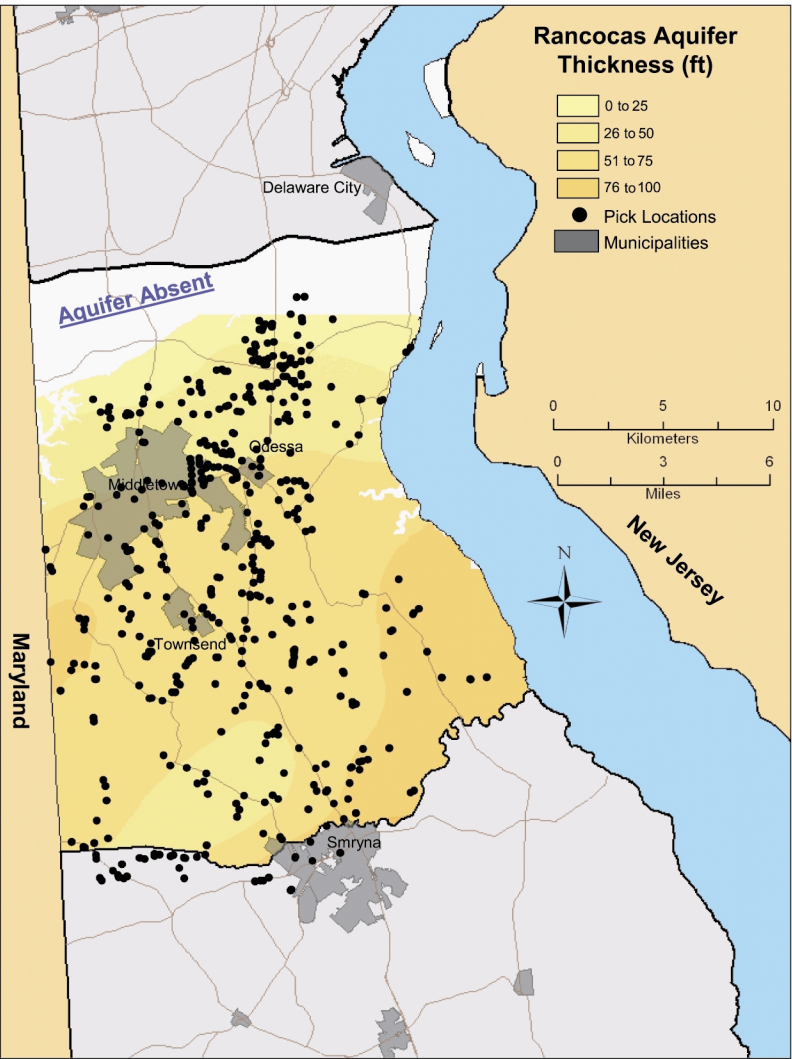


Figure 21. Thickness of the Rancocas aquifer. The Rancocas aquifer includes portions of the Manasquan and Hornerstown Formations in some locations.

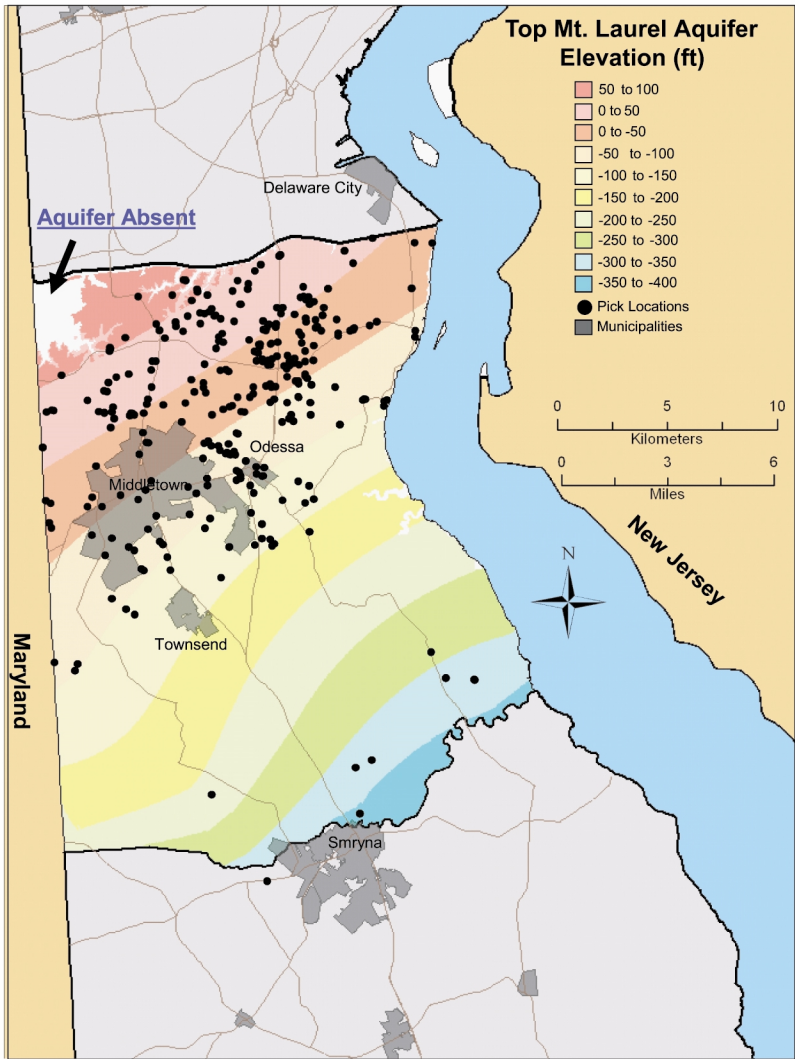


Figure 22. Elevation of the top of the Mount Laurel aquifer. The section near the top of the Mount Laurel aquifer includes sandier intervals of the Navesink Formations in some locations.

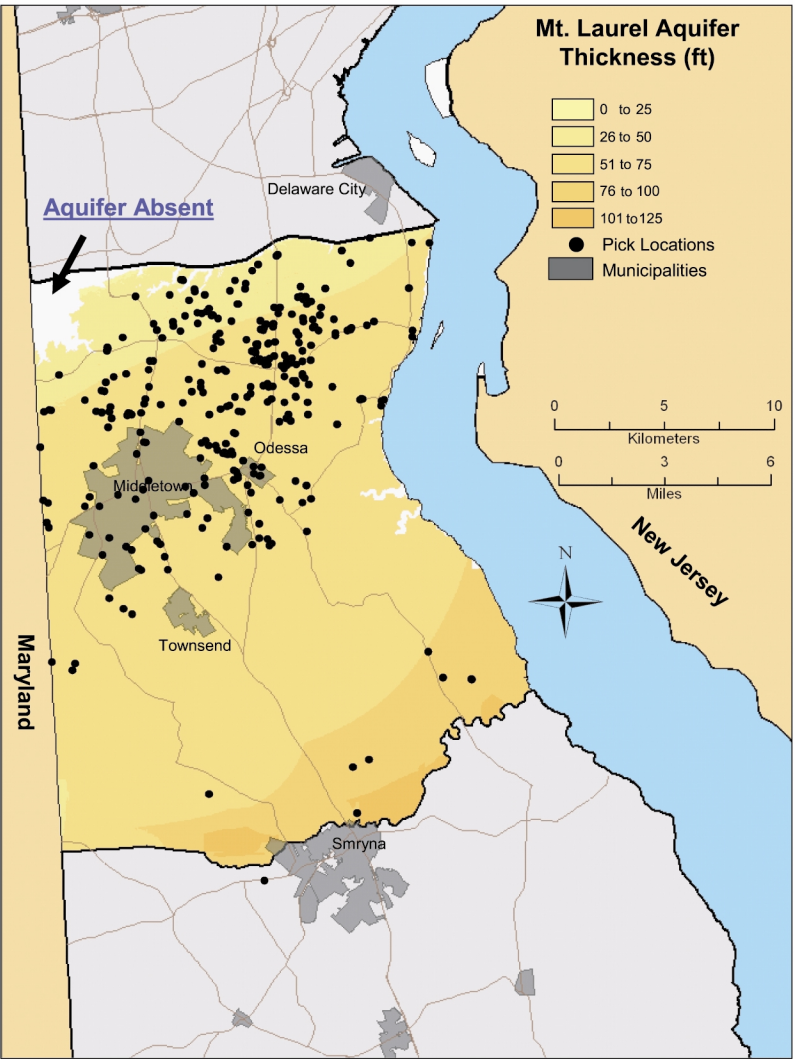


Figure 23. Thickness of the Mount Laurel aquifer. The Mount Laurel aquifer includes sandier intervals of the Navesink Formations in some locations.

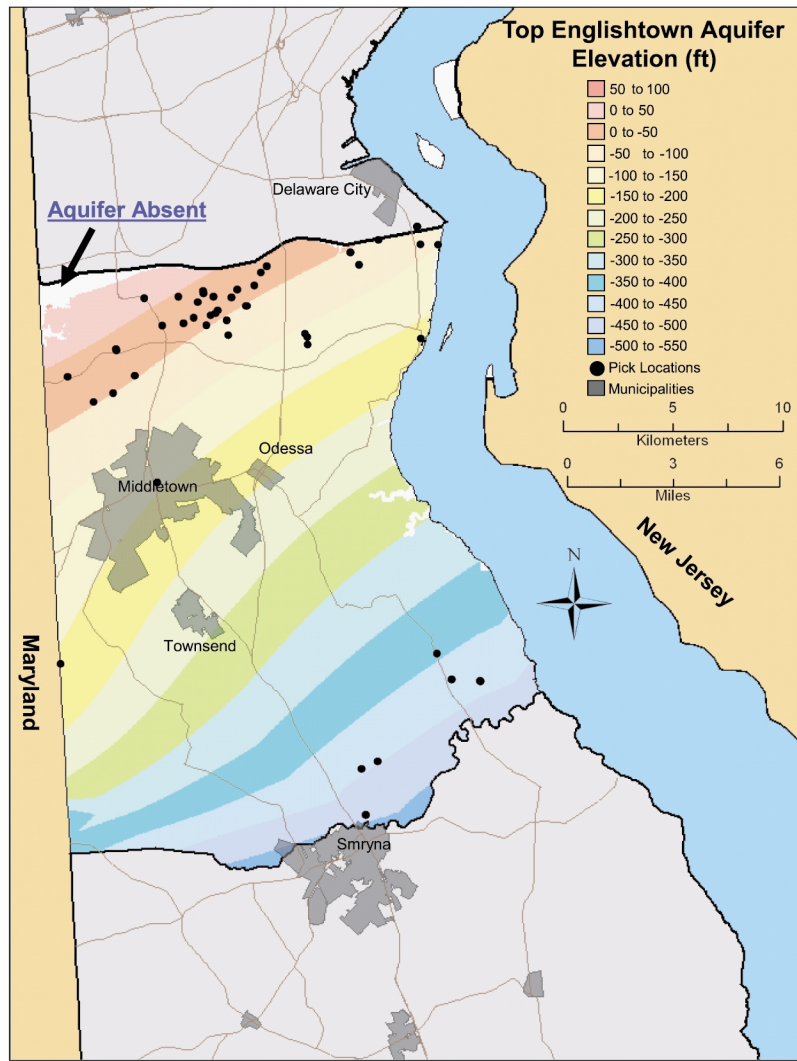


Figure 24. Elevation of the top of the Englishtown aquifer. The Englishtown is considered an aquifer in a broad sense; however, it is a "poor" aquifer in Delaware.

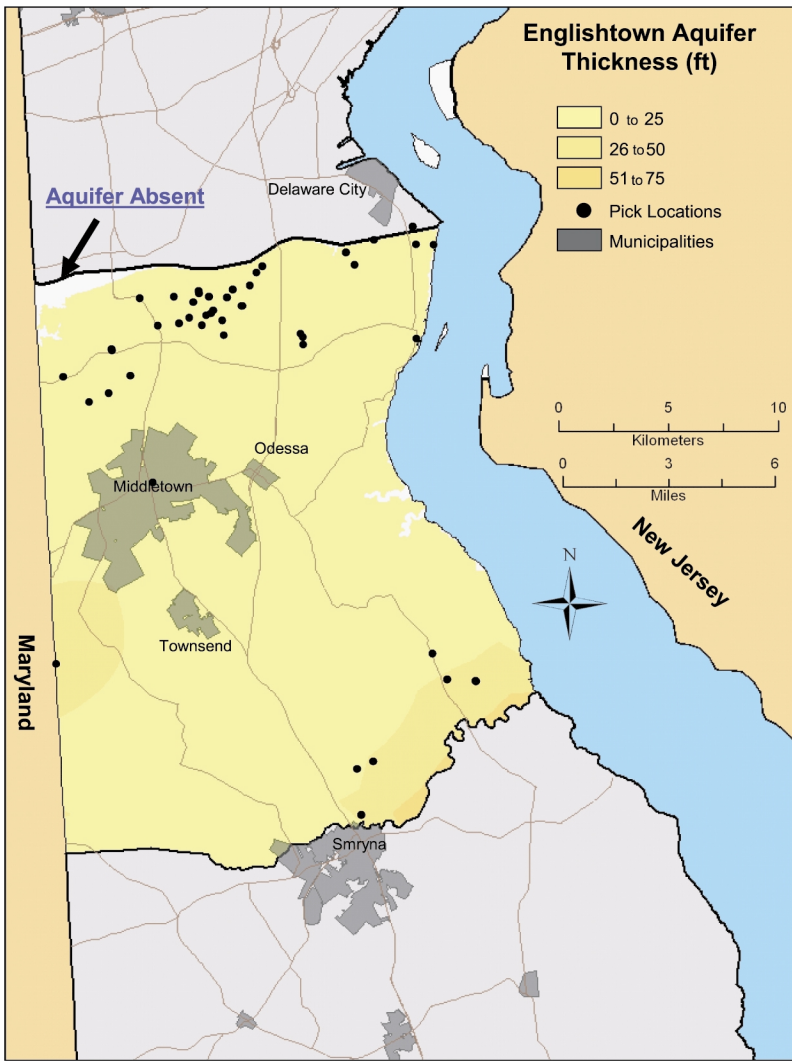


Figure 25. Thickness of the Englishtown aquifer. The Englishtown is considered an aquifer in a very broad sense; however, it is a "poor" aquifer in Delaware.

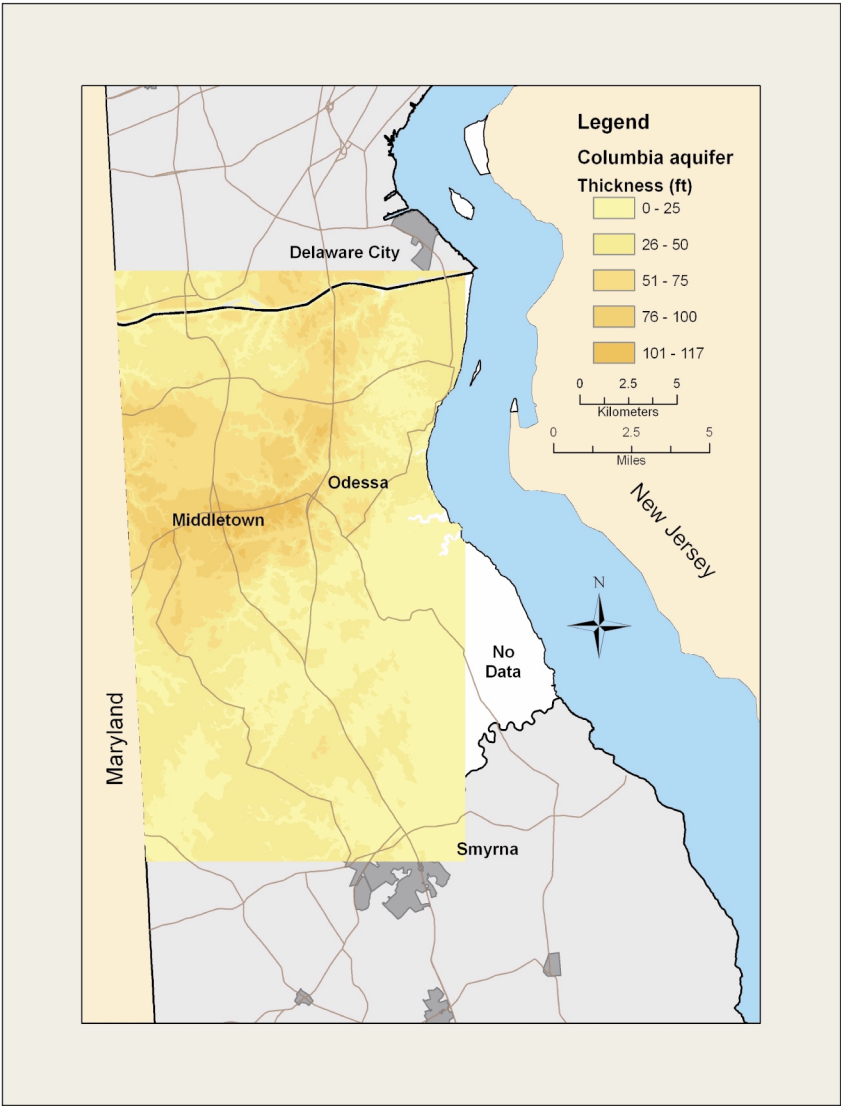


Figure 26. Thickness of the Columbia aquifer