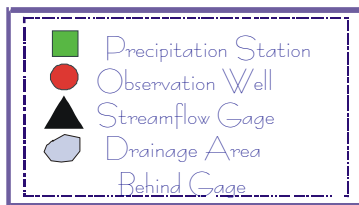
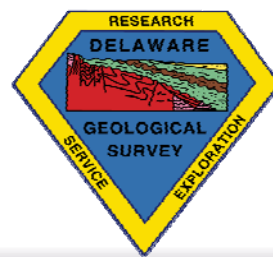
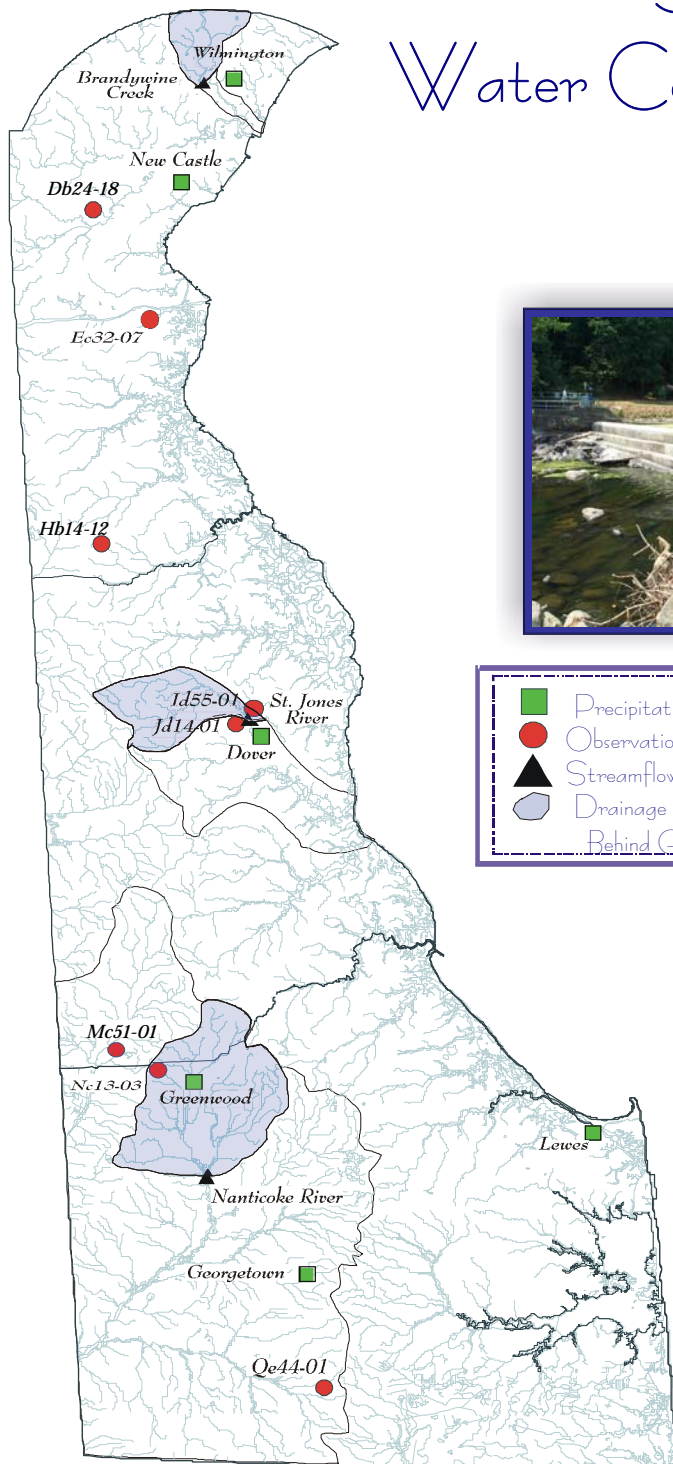


# DELAWARE GEOLOGICAL SURVEY

## Summary of Water Conditions in Delaware Water Year 2008 September, 2008



Compiled by J. H. Talley and S. J. Baxter

### Acknowledgments

U. S. Geological Survey  
National Weather Service  
Delaware Department of Transportation  
Delaware State Climatologist  
University of Delaware  
City of Dover  
City of Lewes  
City of Wilmington  
Connie Swartzentruber

### Photos

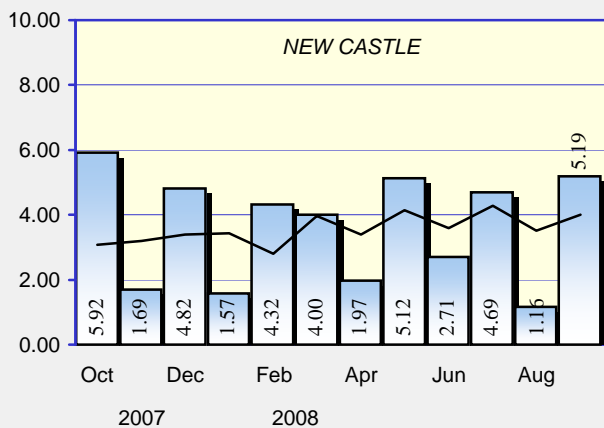
Brandywine Creek, drought of 2002  
Red Clay Creek, remnants of  
Tropical Storm Henri,  
September 15, 2003

Hydrography Digital Line Graph United States Geological Survey 1993  
Projection: UTM 18 Datum: NAD 83

Web Site: <http://www.udel.edu/dgs>

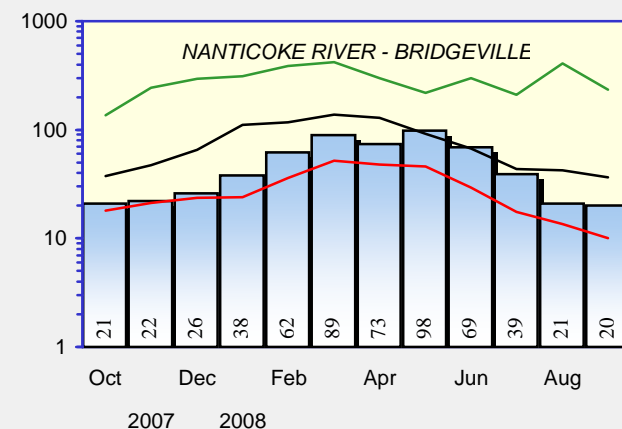
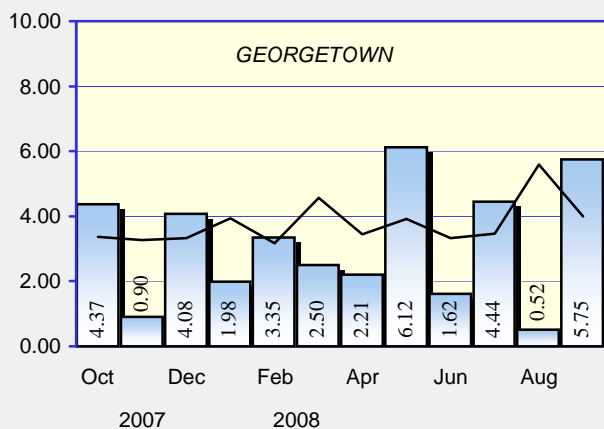
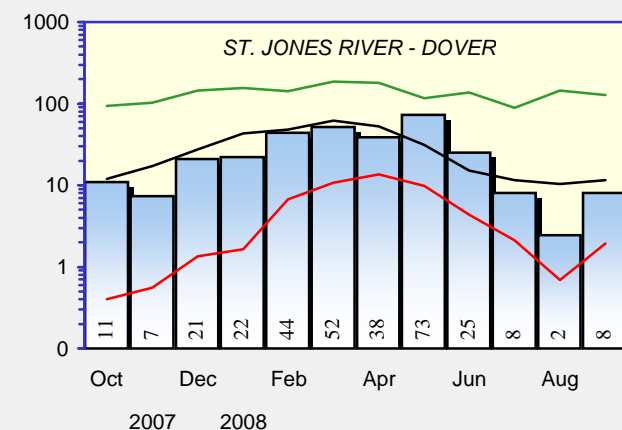
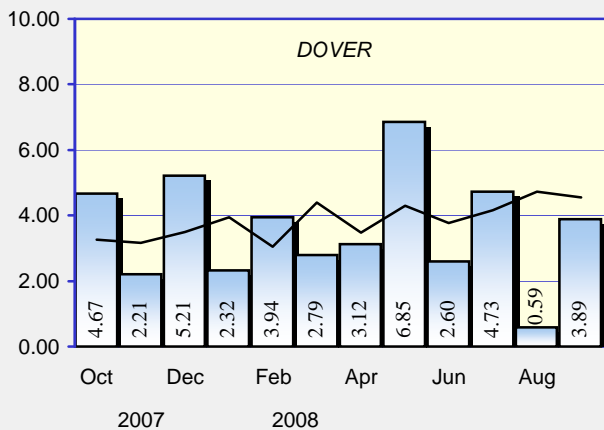
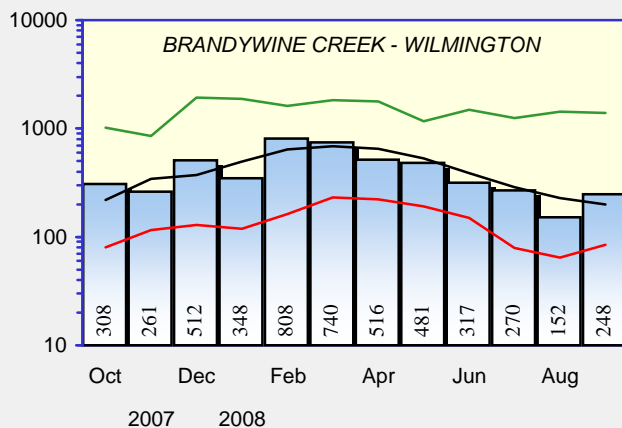
## PRECIPITATION

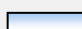

Monthly Total  
Measured in Inches


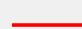
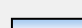
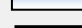


## STREAMFLOWS

Monthly Average - CFS  
(Provisional - Subject to Revision)

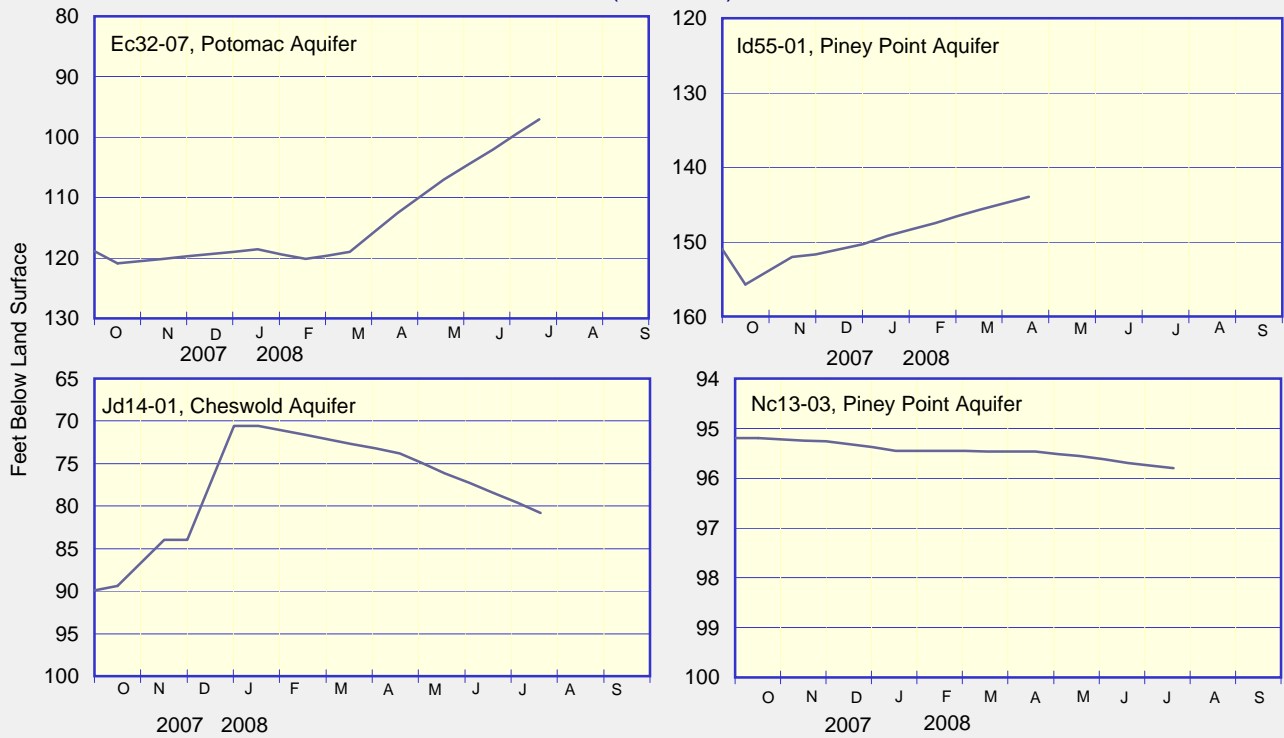


 Current monthly total  
 Long term average

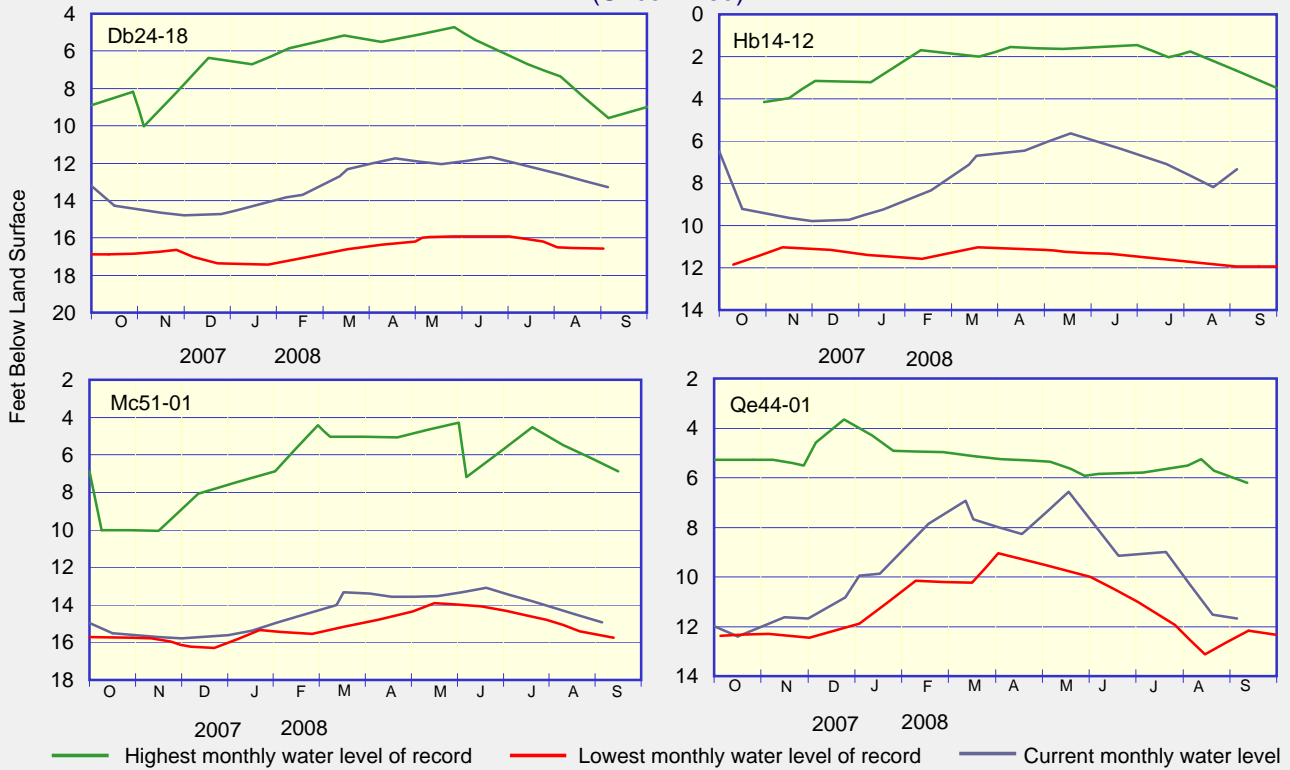
 Highest monthly mean discharge  
 Lowest monthly mean discharge  
 Current monthly mean discharge  
 Median monthly mean discharge

# GROUND-WATER LEVELS

## ARTESIAN WELLS (Confined)

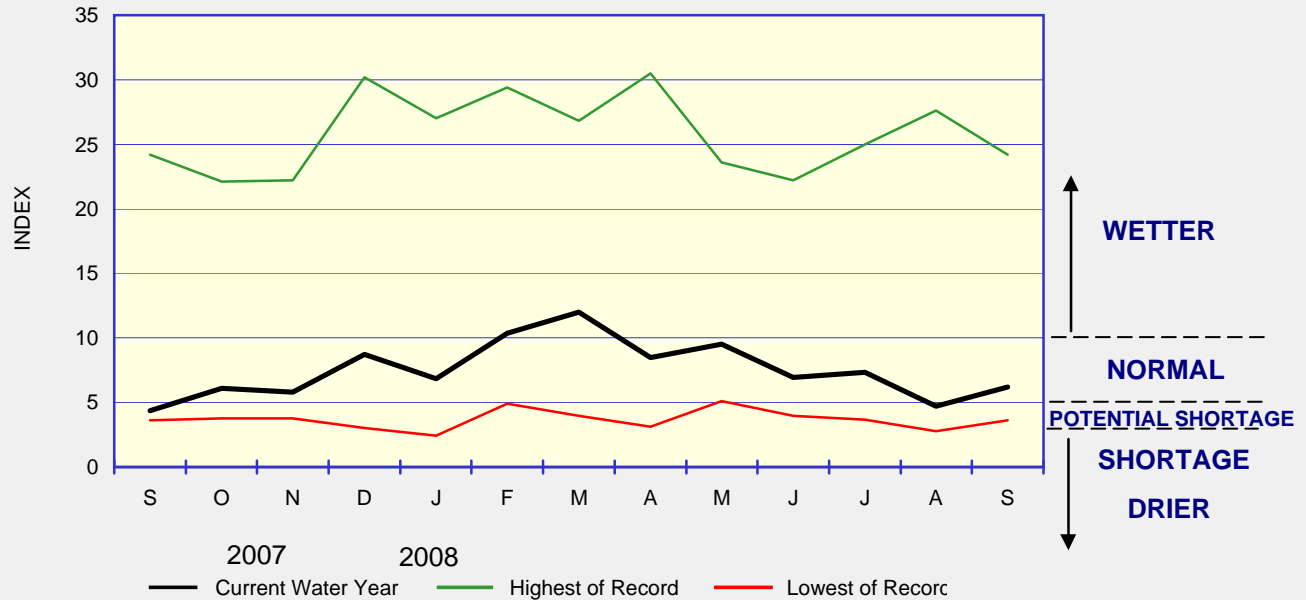


## WATER-TABLE WELLS (Unconfined)



## WATER CONDITIONS INDEX FOR NEW CASTLE COUNTY

The Water Conditions Index rose back up into the Normal range for the month of September due to above normal precipitation in northern New Castle County. The ground-water level in well Db24-18 declined slightly, which was due to below normal rainfall during the month of August.



Delaware Geological Survey  
 University of Delaware  
 Newark, DE 19716

*Summary of Water Conditions in Delaware* is published by the Delaware Geological Survey, a State agency established by an Act of the Delaware General Assembly in 1951 and organized as a unit of the University of Delaware.  
 John H. Talley  
*Director and State Geologist*  
 John H. Talley and Stefanie J. Baxter  
*Editors, Summary of Water Conditions in Delaware*

CHANGE OF ADDRESS?  
 Send mailing label and your new address, and/or

REQUESTS FOR PUBLICATIONS to:  
 Laura Wisk  
 Delaware Geological Survey  
 University of Delaware  
 Newark, DE 19716-7501  
 302-831-2834  
 delgeosurvey@udel.edu  
 www.udel.edu/dgs