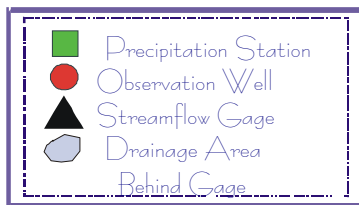
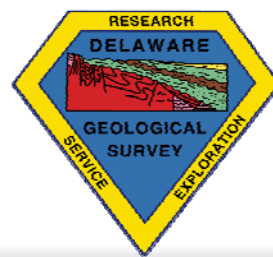
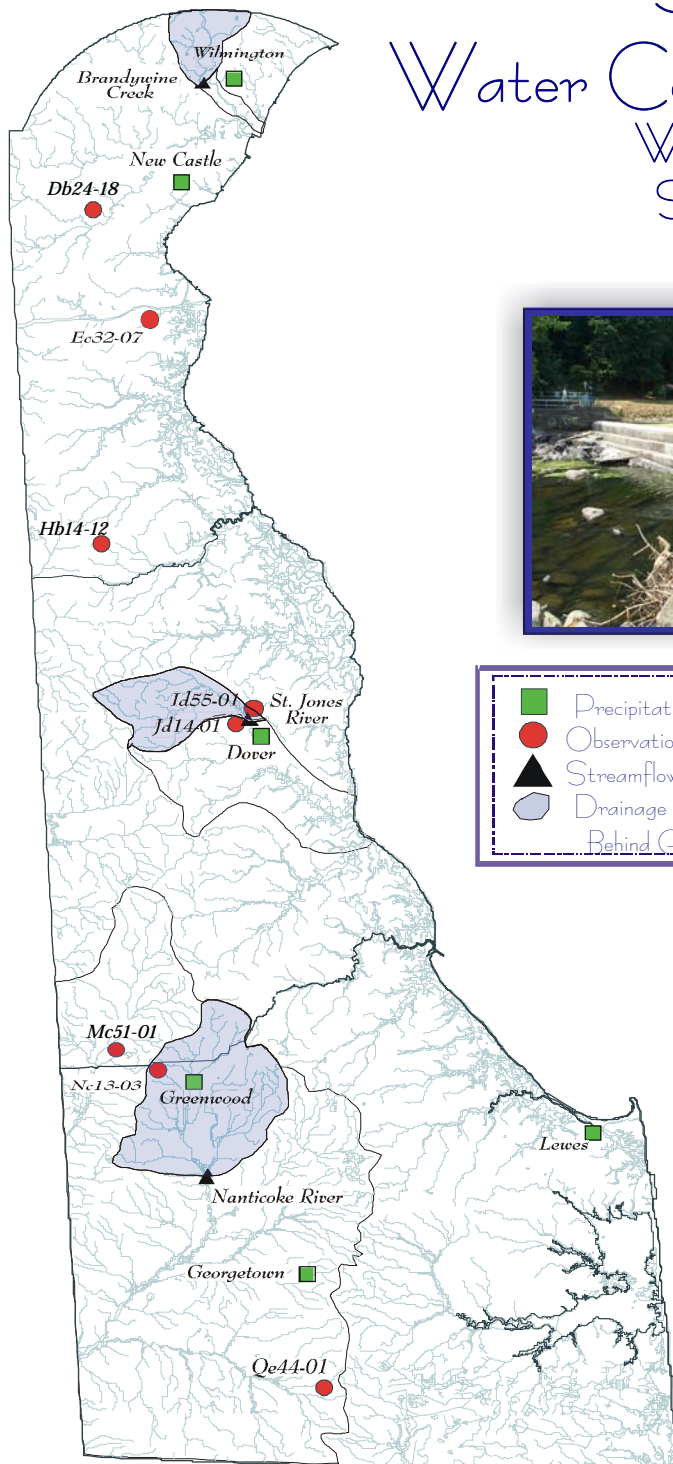


# DELAWARE GEOLOGICAL SURVEY

## Summary of Water Conditions in Delaware Water Year 2006 September 2006



Compiled by J. H. Talley and S. J. Baxter

Acknowledgments  
 U. S. Geological Survey  
 National Weather Service  
 Delaware Department of Transportation  
 University of Delaware  
 City of Dover  
 City of Lewes  
 City of Wilmington  
 Daniel and Connie Swartzentruber

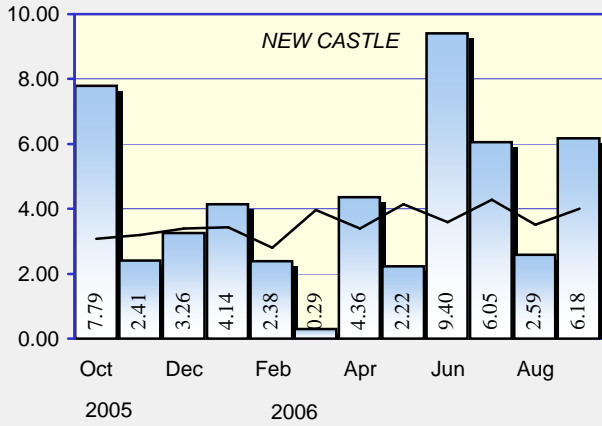
Photos  
 Brandywine Creek, drought of 2002  
 Red Clay Creek, remnants of  
 Tropical Storm Henri,  
 September 15, 2003

Hydrography Digital Line Graph United States Geological Survey 1993  
 Projection: UTM 18 Datum: NAD 83

Web Site: <http://www.udel.edu/dgs>

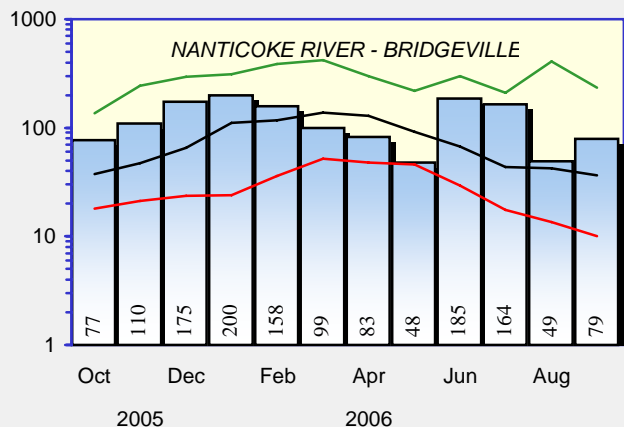
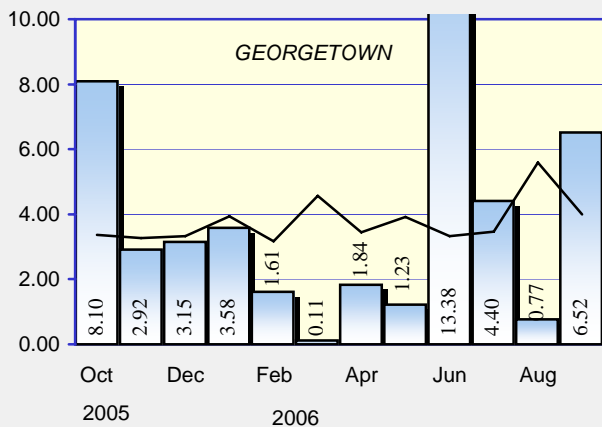
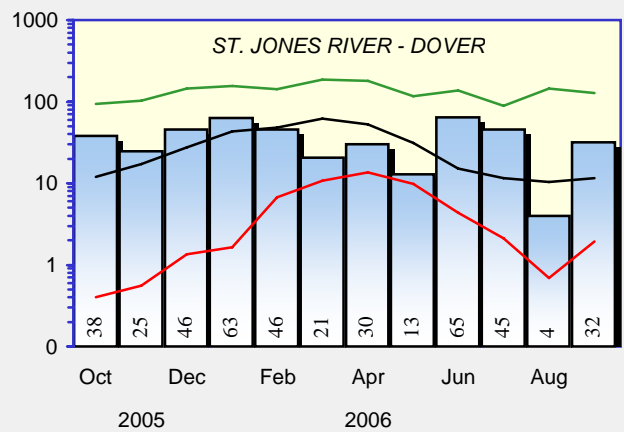
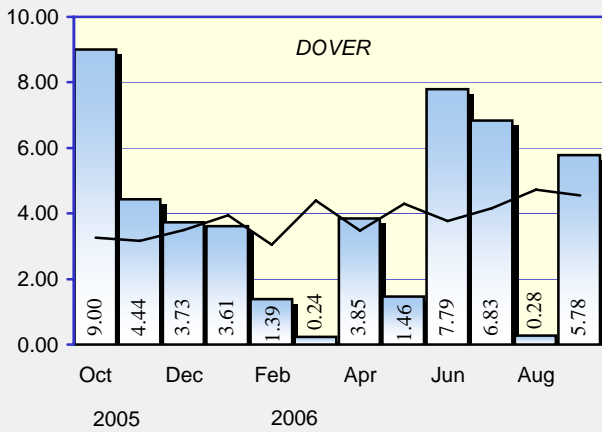
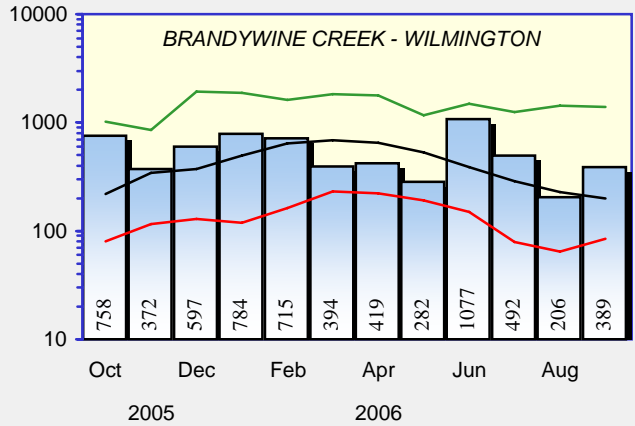
## PRECIPITATION

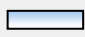

Monthly Total  
Measured in Inches

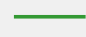
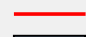
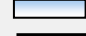



## STREAMFLOWS

Monthly Average - CFS  
(Provisional - Subject to Revision)

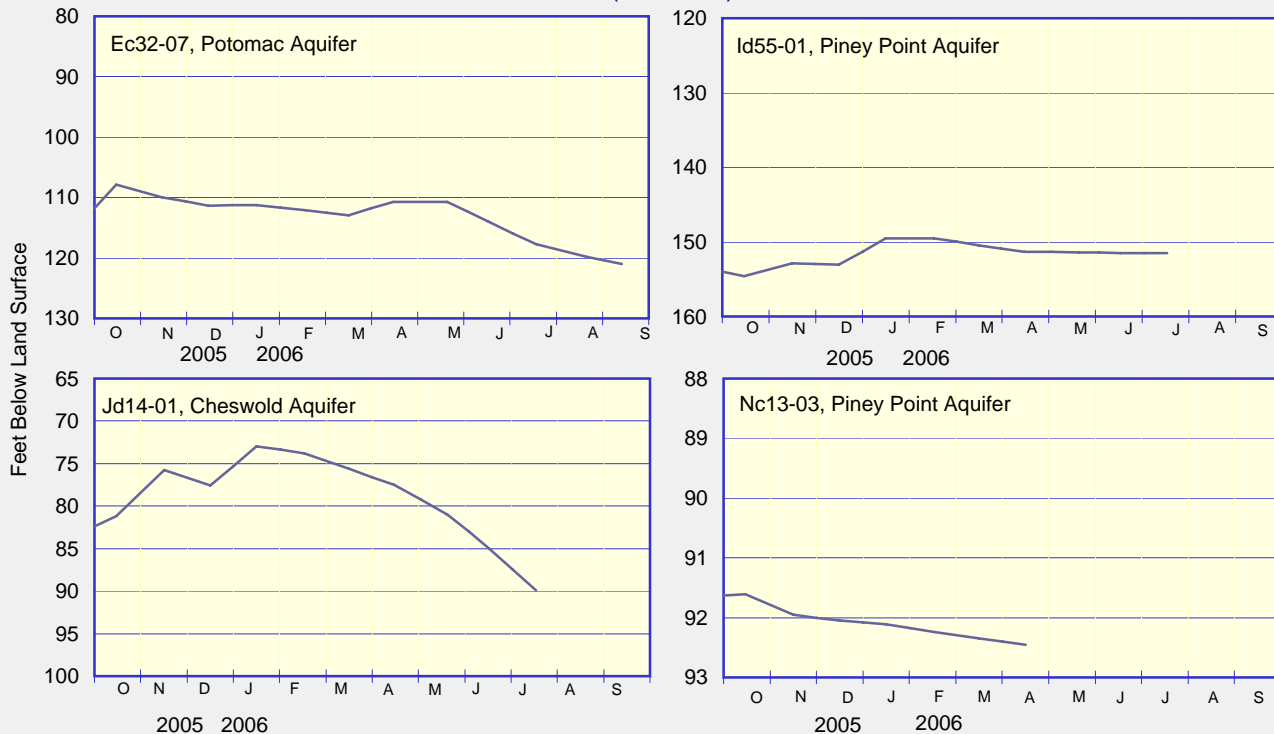


 Current monthly total  
 Long term average

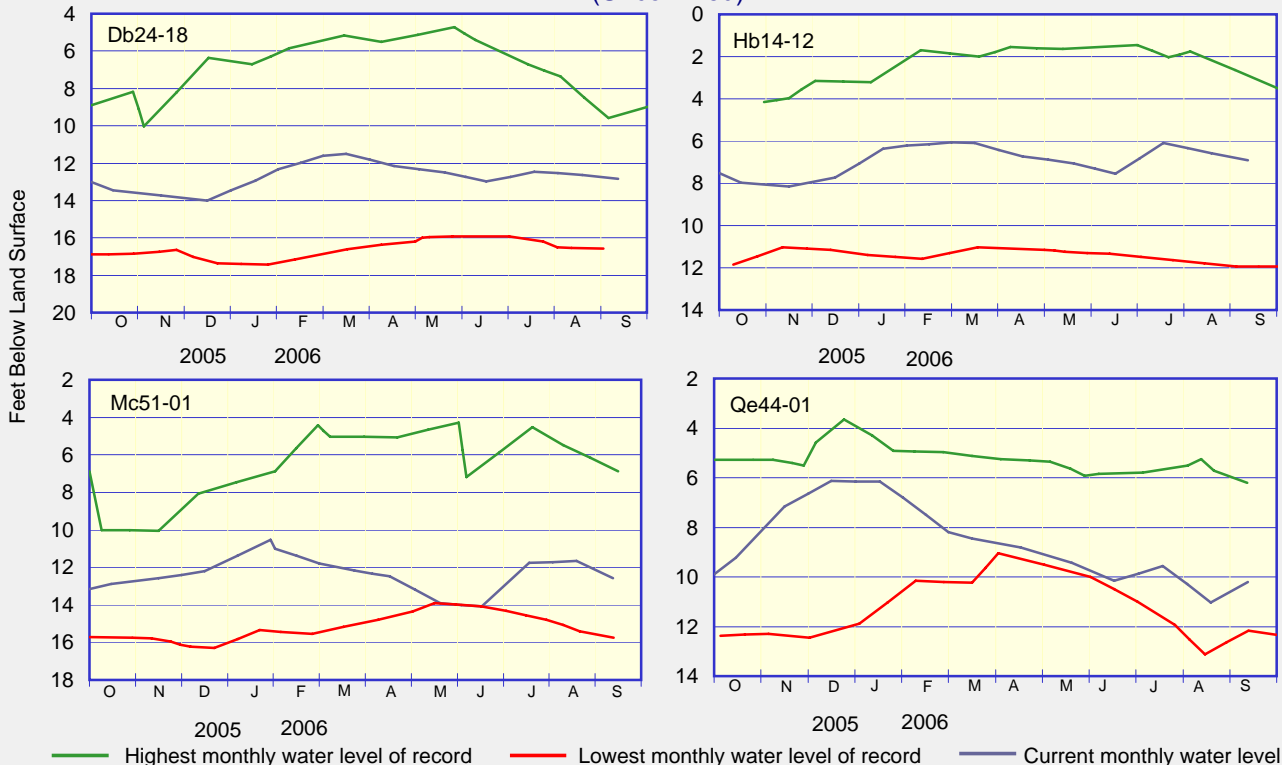
 Highest monthly mean discharge  
 Lowest monthly mean discharge  
 Current monthly mean discharge  
 Median monthly mean discharge

# GROUND-WATER LEVELS

## ARTESIAN WELLS (Confined)

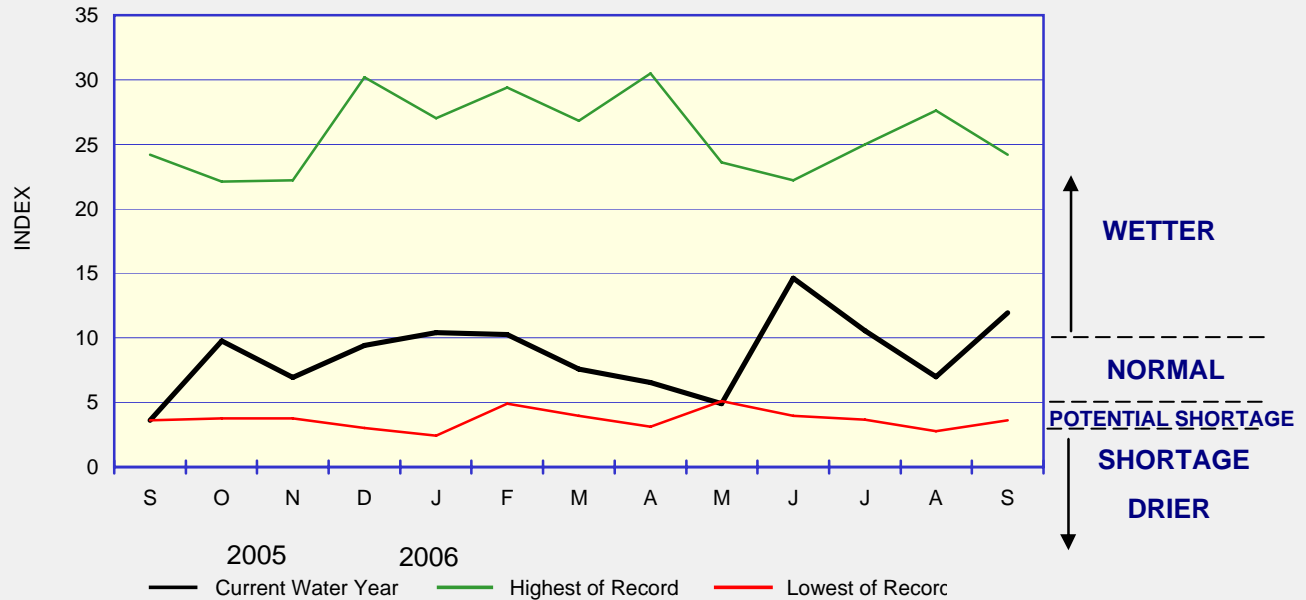


## WATER-TABLE WELLS (Unconfined)



## WATER CONDITIONS INDEX FOR NEW CASTLE COUNTY

The Index rose to the Wetter range during September due to above normal precipitation, associated higher flows on the Brandywine River and seasonal ground-water levels in well Db24-18. The average Index value for Water Year 2006 (October 2005 through September 2006) was 9.2, which is at the upper end of the Normal range.



Delaware Geological Survey  
 University of Delaware  
 Newark, DE 19716

*Summary of Water Conditions in Delaware* is published by the Delaware Geological Survey, a State agency established by an Act of the Delaware General Assembly in 1951 and organized as a unit of the University of Delaware.  
 John H. Talley  
*Director and State Geologist*  
 John H. Talley and Stefanie J. Baxter  
*Editors, Summary of Water Conditions in Delaware*

CHANGE OF ADDRESS?  
 Send mailing label and your new address, and/or

REQUESTS FOR PUBLICATIONS to:  
 Delaware Geological Survey  
 University of Delaware  
 Newark, DE 19716-7501  
 302-831-2834  
 delgeosurvey@udel.edu  
 www.udel.edu/dgs