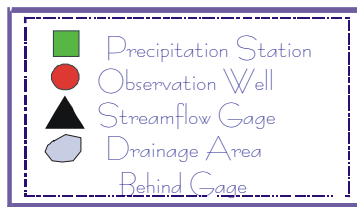
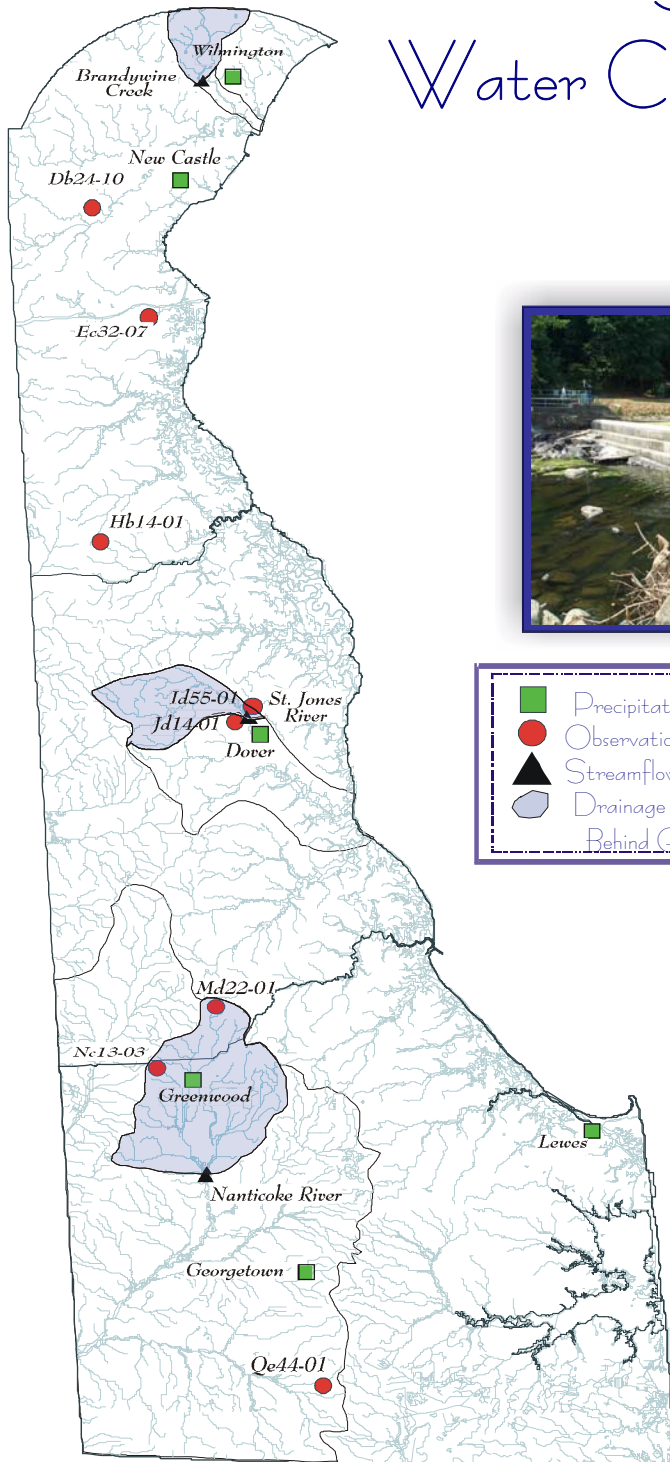


# DELAWARE GEOLOGICAL SURVEY

## Summary of Water Conditions in Delaware Water Year 2006 October, 2005



Compiled by J. H. Talley and S. J. Baxter

Acknowledgments  
 U. S. Geological Survey  
 National Weather Service  
 Delaware Department of Transportation  
 University of Delaware  
 City of Dover  
 City of Lewes  
 City of Wilmington  
 Daniel and Connie Swartzentruber

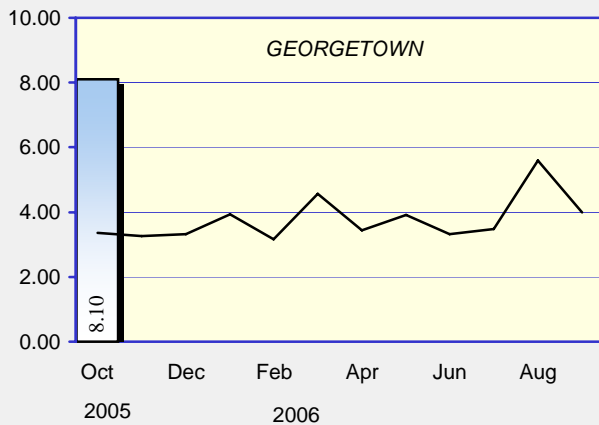
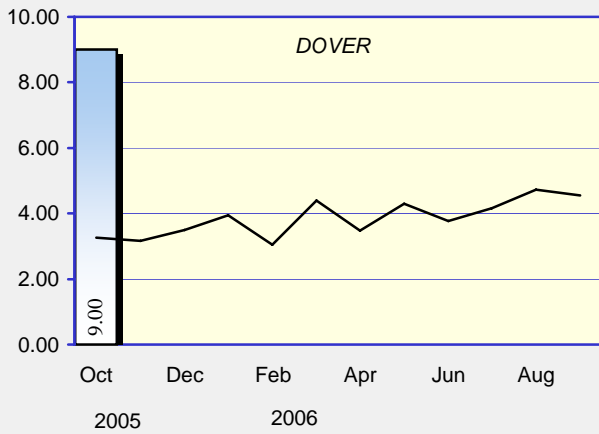
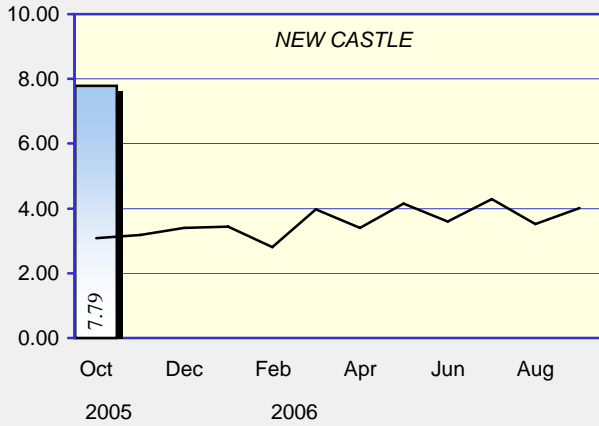
Photos  
 Brandywine Creek, drought of 2002  
 Red Clay Creek, remnants of  
 Tropical Storm Henri,  
 September 15, 2003

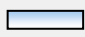

Hydrography Digital Line Graph United States Geological Survey 1993  
 Projection: UTM 18 Datum: NAD 83

Web Site: <http://www.udel.edu/dgs>

## PRECIPITATION

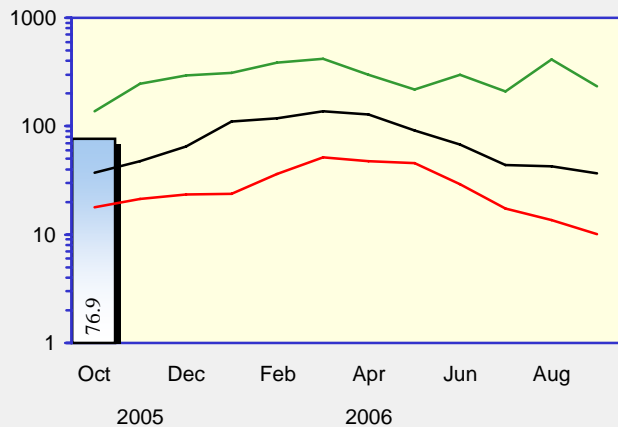
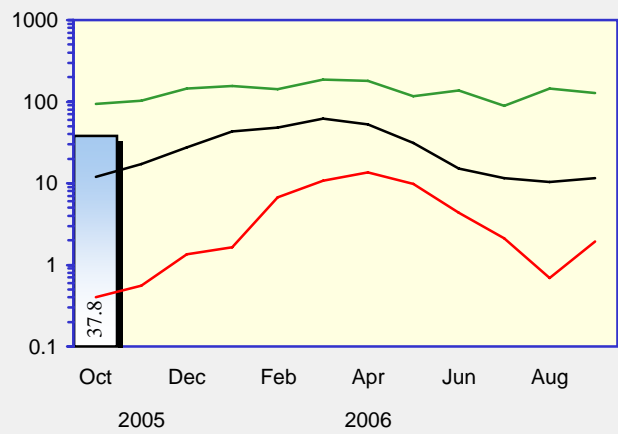
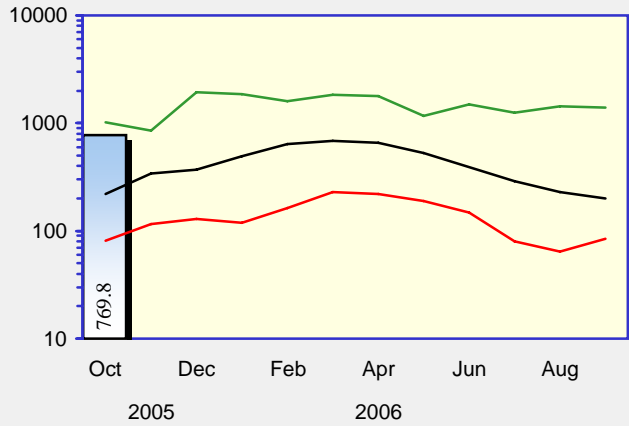
Monthly Total  
Measured in Inches

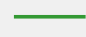
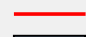
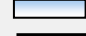



 Current monthly total  
 Long term average

## STREAMFLOWS

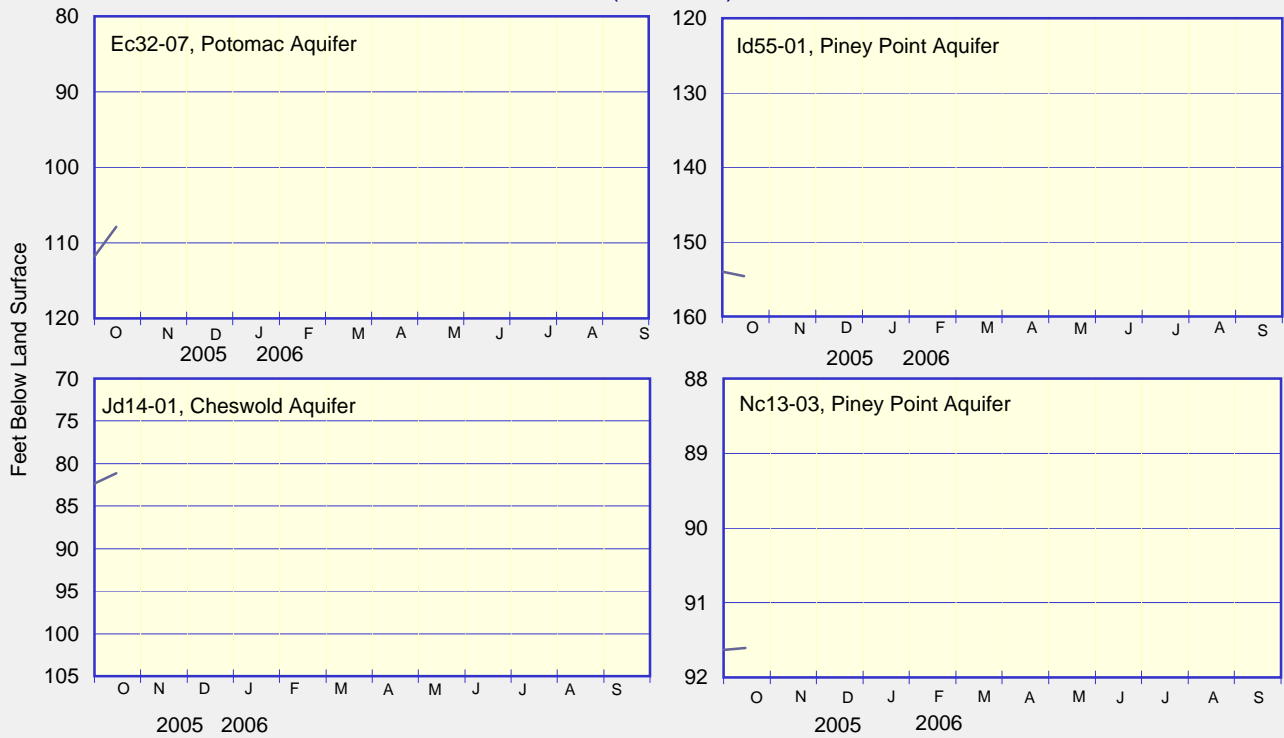
Monthly Average - CFS  
(Provisional - Subject to Revision)



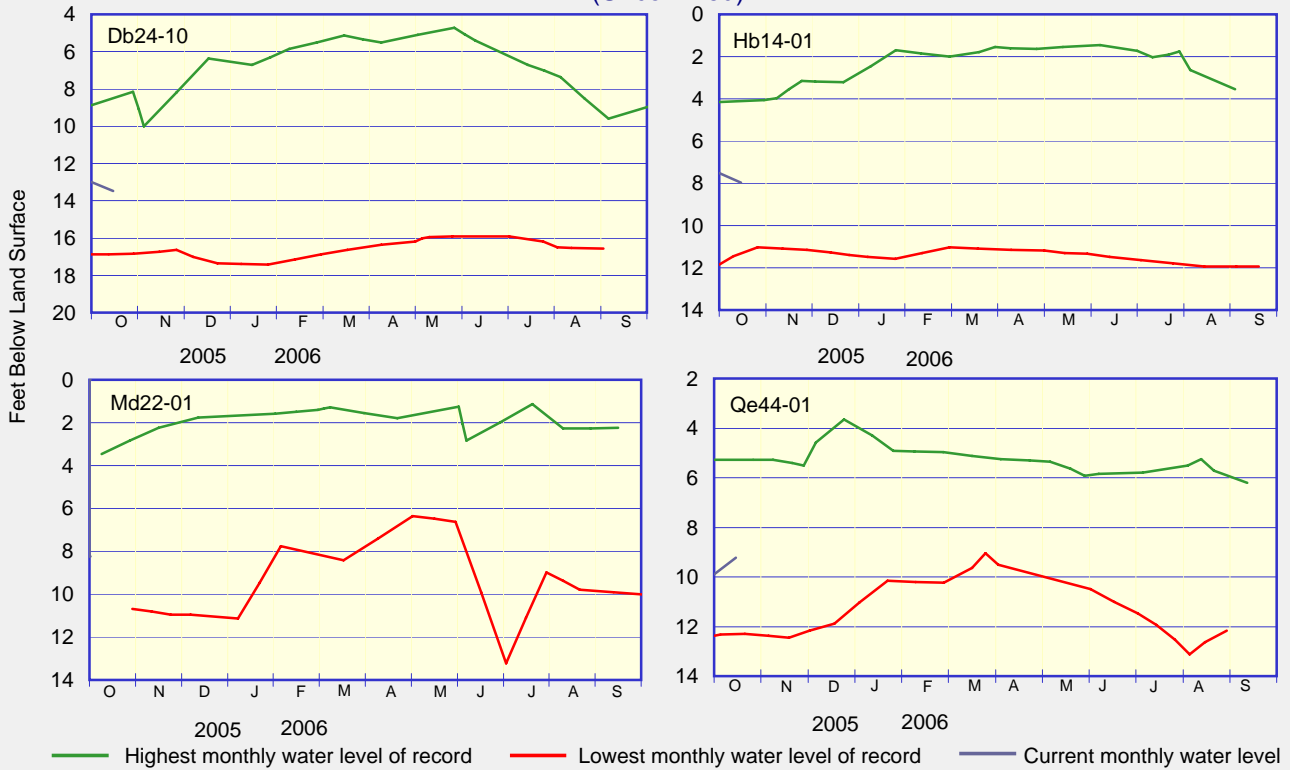
 Highest monthly mean discharge  
 Lowest monthly mean discharge  
 Current monthly mean discharge  
 Median monthly mean discharge

# GROUND-WATER LEVELS

## ARTESIAN WELLS (Confined)

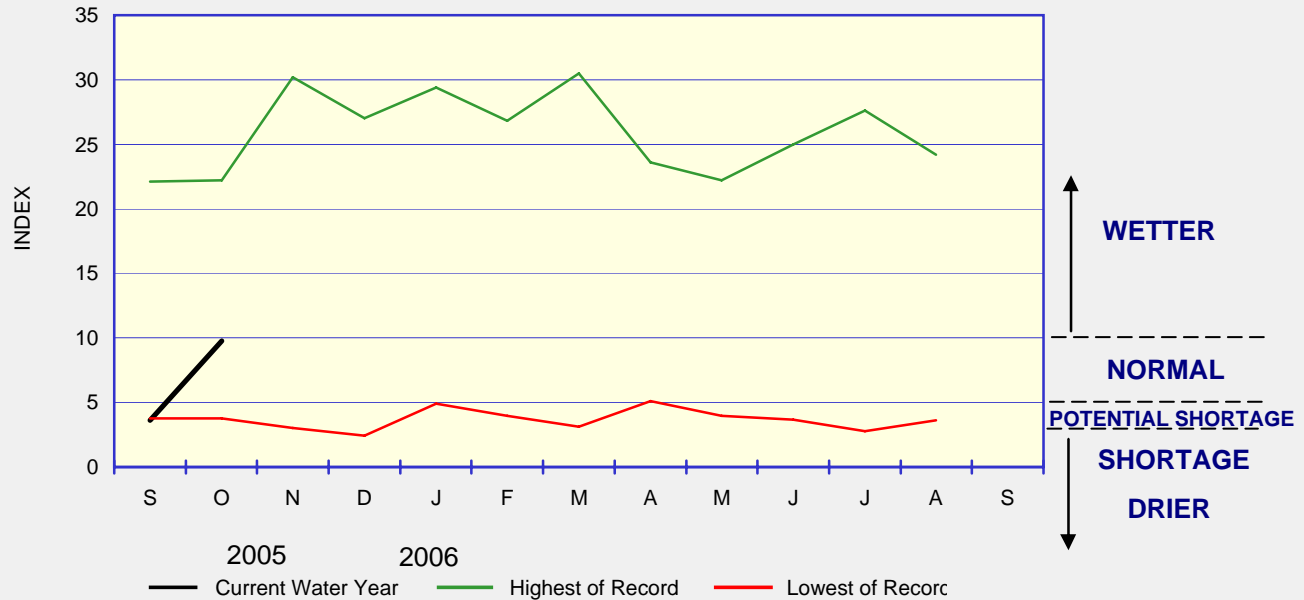


## WATER-TABLE WELLS (Unconfined)



## WATER CONDITIONS INDEX FOR NEW CASTLE COUNTY

The Water Conditions Index for New Castle County increased sharply to the high end of the "Normal" range during the month of October. The increase is due to rainfall amounts in excess of 7 inches that occurred both at the Wilmington Airport (New Castle) and Porter Reservoir which resulted in above normal streamflows on the Brandywine River.



Delaware Geological Survey  
University of Delaware  
Newark, DE 19716

*Summary of Water Conditions in Delaware* is published by the Delaware Geological Survey, a State agency established by an Act of the Delaware General Assembly in 1951 and organized as a unit of the University of Delaware.

John H. Talley

*Director and State Geologist*

John H. Talley and Stefanie J. Baxter

*Editors, Summary of Water Conditions in Delaware*

CHANGE OF ADDRESS?

Send mailing label and your new address, and/or

REQUESTS FOR PUBLICATIONS to:

Dorothy Windish

Delaware Geological Survey

University of Delaware

Newark, DE 19716-7501

302-831-2834

delgeosurvey@udel.edu

www.udel.edu/dgs