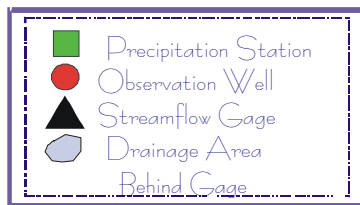
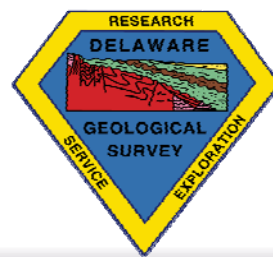
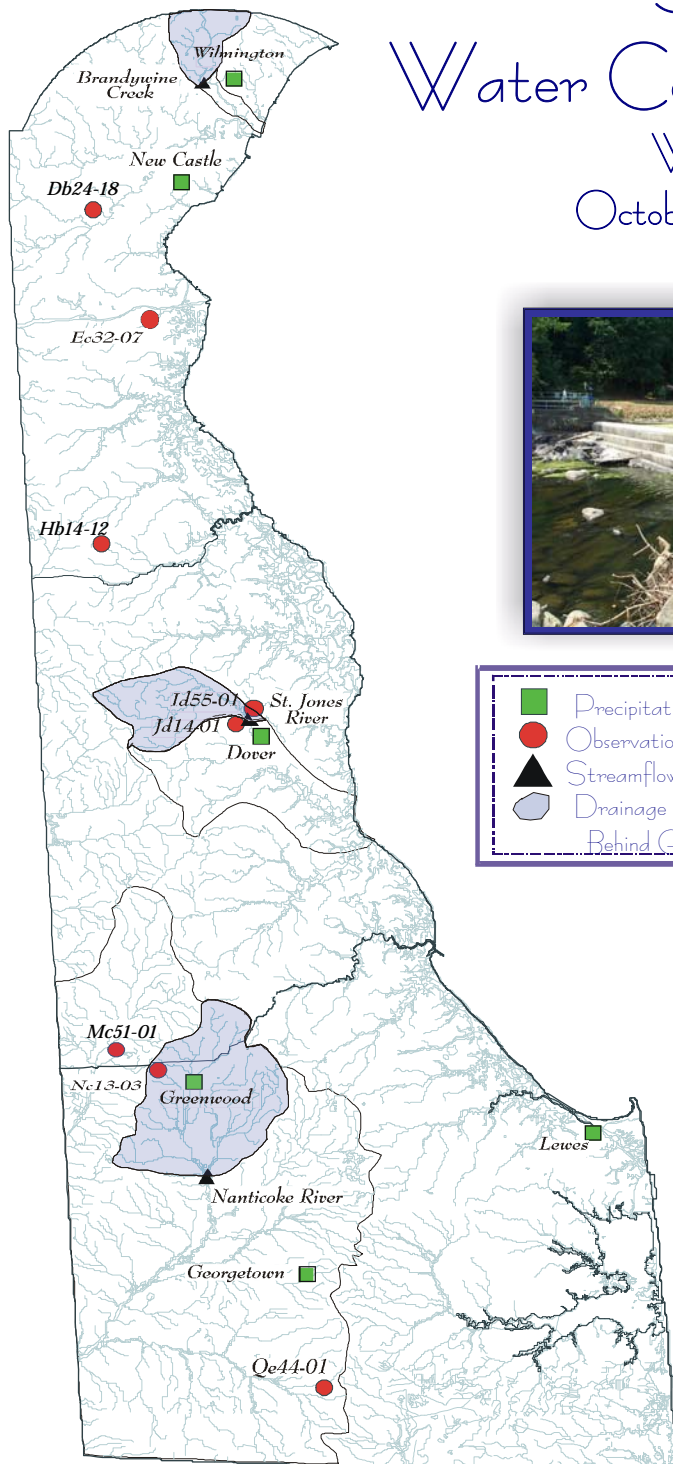


# DELAWARE GEOLOGICAL SURVEY

## Summary of Water Conditions in Delaware Water Year 2009 October, 2008 - May, 2009



Compiled by J. H. Talley and S. J. Baxter

### Acknowledgments

U. S. Geological Survey  
National Weather Service  
Delaware Department of Transportation  
Delaware State Climatologist  
University of Delaware  
City of Dover  
City of Lewes  
City of Wilmington  
Connie Swartzentruber

### Photos

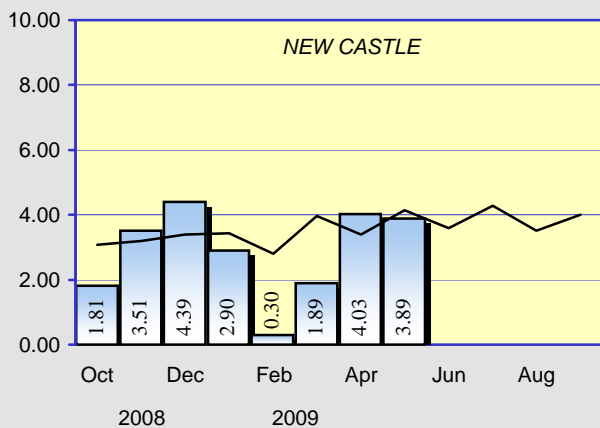
Brandywine Creek, drought of 2002  
Red Clay Creek, remnants of  
Tropical Storm Henri,  
September 15, 2003

Hydrography Digital Line Graph United States Geological Survey 1993  
Projection: UTM 18 Datum: NAD 83

Web Site: <http://www.udel.edu/dgs>

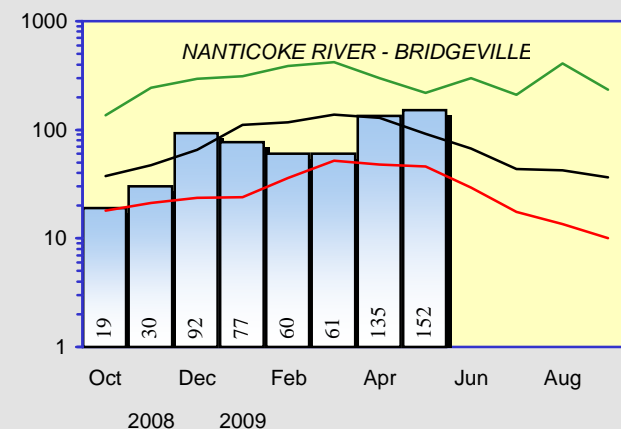
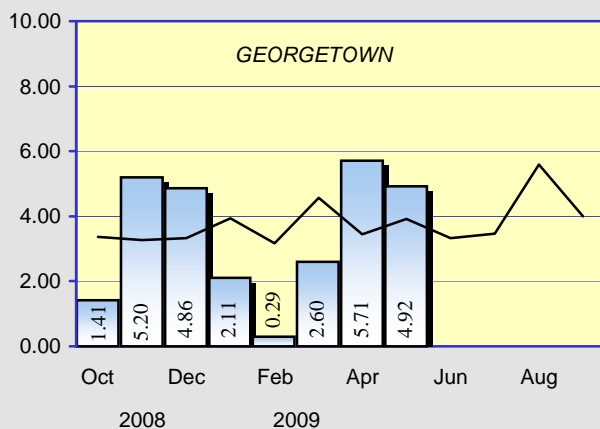
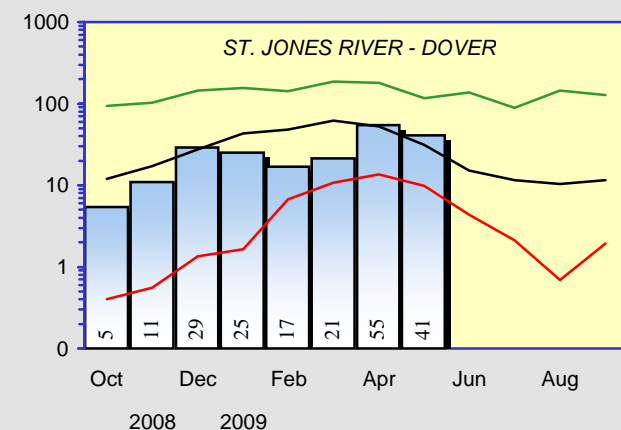
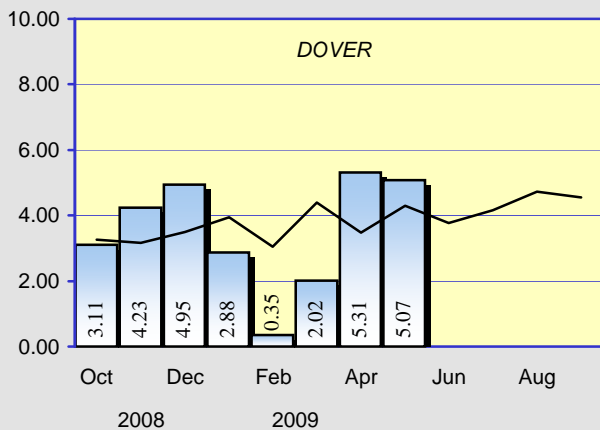
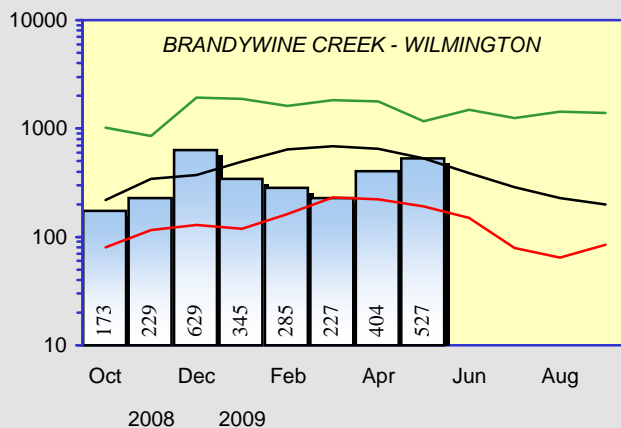
## PRECIPITATION



Monthly Total  
Measured in Inches


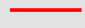
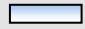



## STREAMFLOWS

Monthly Average - CFS  
(Provisional - Subject to Revision)

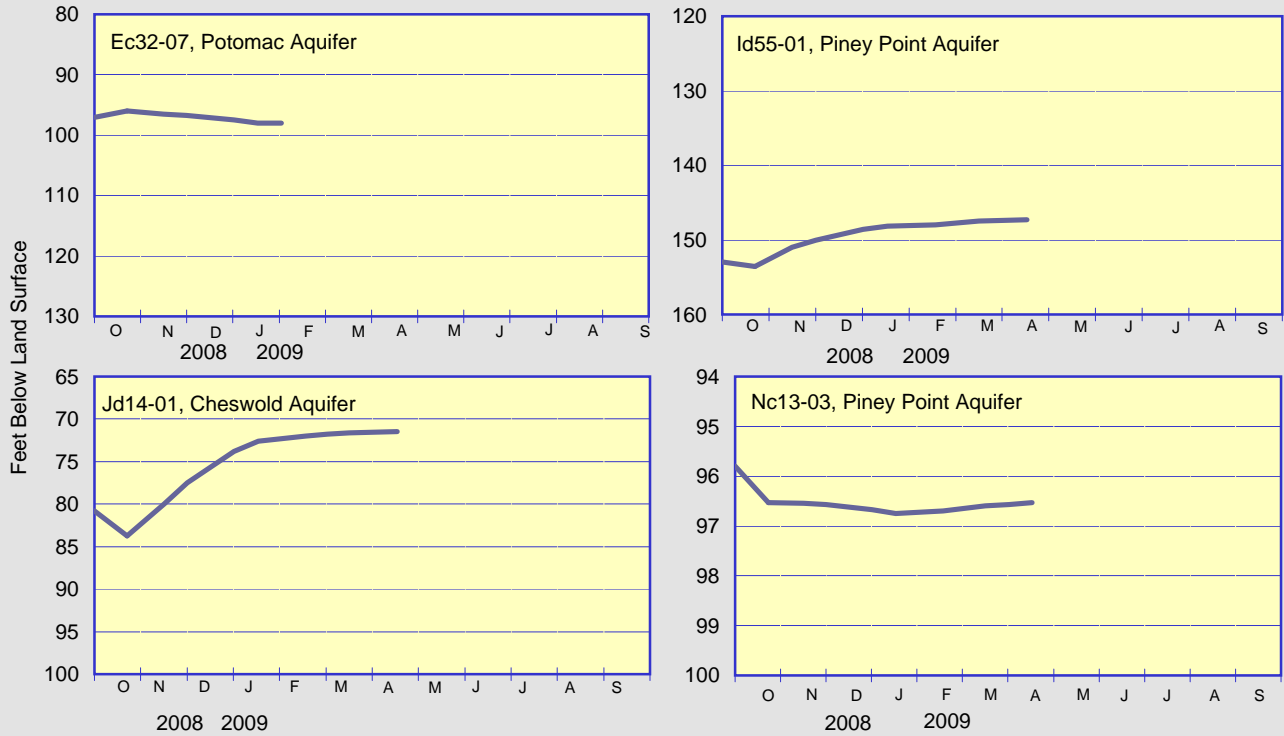


 Current monthly total  
 Long term average

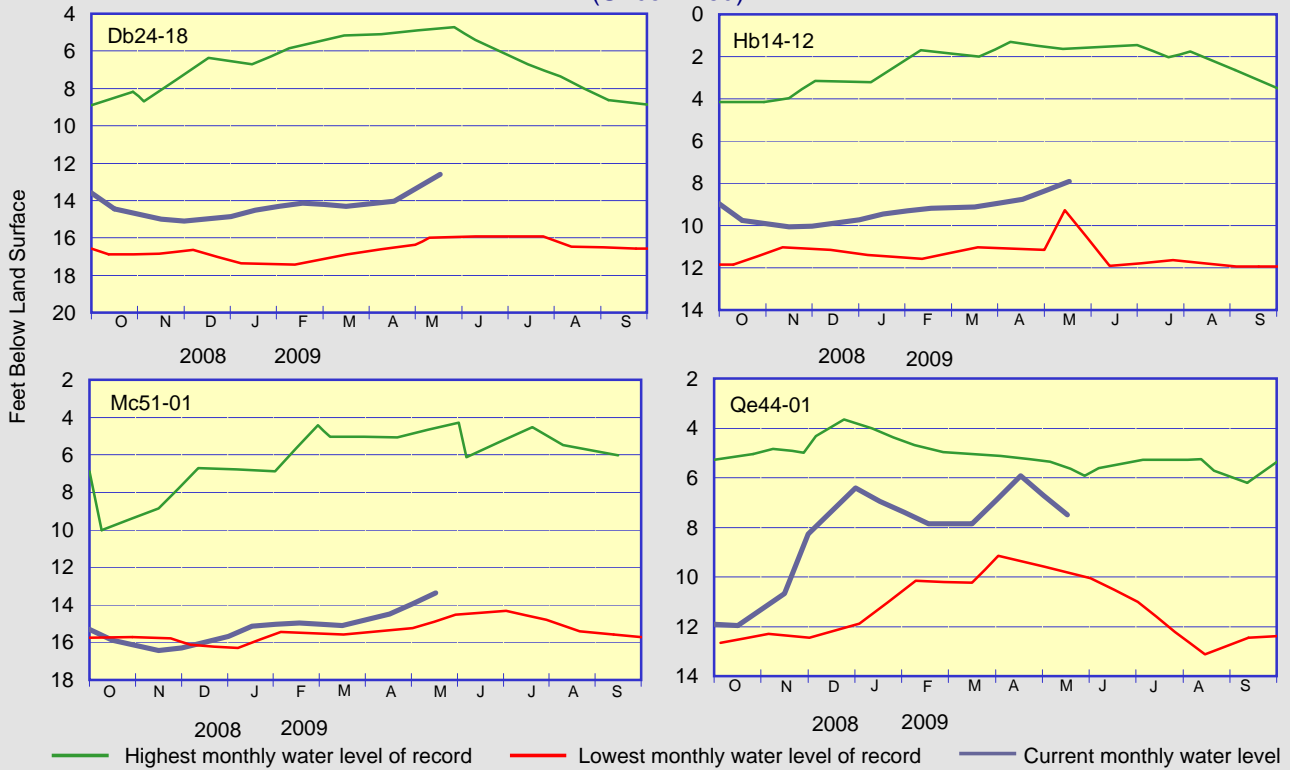
 Highest monthly mean discharge  
 Lowest monthly mean discharge  
 Current monthly mean discharge  
 Median monthly mean discharge

# GROUND-WATER LEVELS

## ARTESIAN WELLS (Confined)

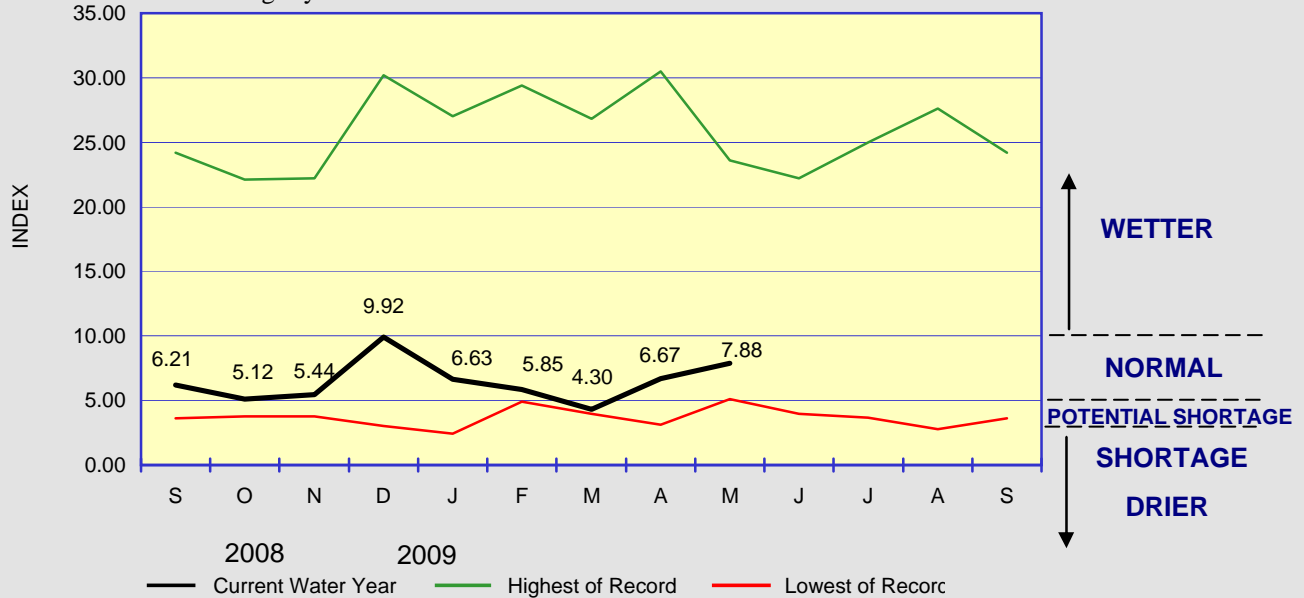


## WATER-TABLE WELLS (Unconfined)



## WATER CONDITIONS INDEX FOR NEW CASTLE COUNTY

The Water Conditions Index continued to rise in the Normal range during the month of May. Normal to above-normal precipitation across the state during May led to increased flows on the Brandywine River in New Castle County, on the St. Jones River in Kent County, and on the Nanticoke River in Sussex County. Ground-water levels generally rose throughout the state with the exception of Qe44-01 located in Sussex County. The water-level in this well decreased slightly.



Delaware Geological Survey  
 University of Delaware  
 Newark, DE 19716

*Summary of Water Conditions in Delaware* is published by the Delaware Geological Survey, a State agency established by an Act of the Delaware General Assembly in 1951 and organized as a unit of the University of Delaware.  
 John H. Talley  
*Director and State Geologist*  
 John H. Talley and Stefanie J. Baxter  
*Editors, Summary of Water Conditions in Delaware*

CHANGE OF ADDRESS?  
 Send mailing label and your new address, and/or

REQUESTS FOR PUBLICATIONS to:  
 Laura Wisk  
 Delaware Geological Survey  
 University of Delaware  
 Newark, DE 19716-7501  
 302-831-2834  
 delgeosurvey@udel.edu  
 www.dgs.udel.edu