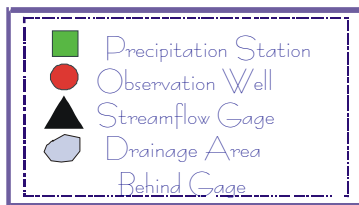
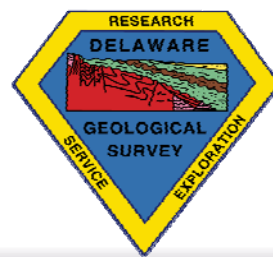
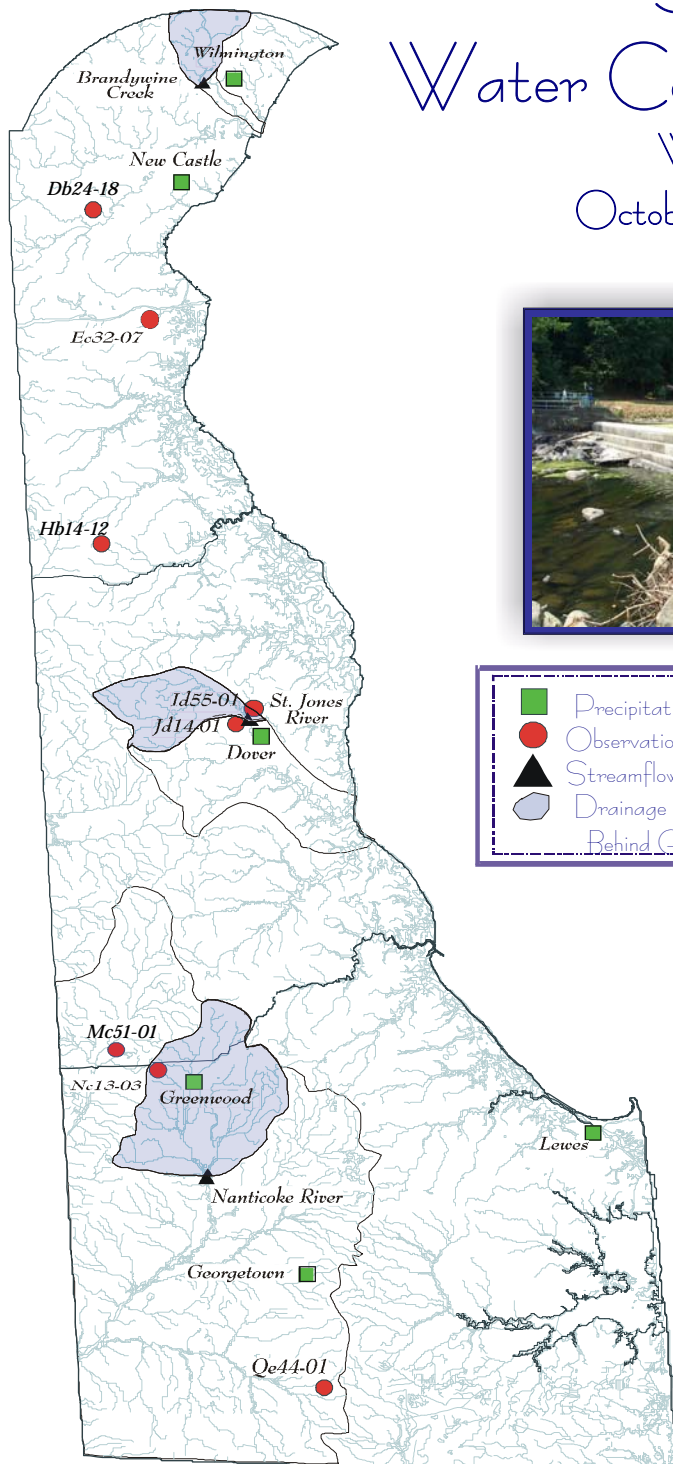


# DELAWARE GEOLOGICAL SURVEY

## Summary of Water Conditions in Delaware Water Year 2009 October, 2008 - June, 2009



Compiled by J. H. Talley and S. J. Baxter

### Acknowledgments

U. S. Geological Survey  
National Weather Service  
Delaware Department of Transportation  
Delaware State Climatologist  
University of Delaware  
City of Dover  
City of Lewes  
City of Wilmington  
Connie Swartzentruber

### Photos

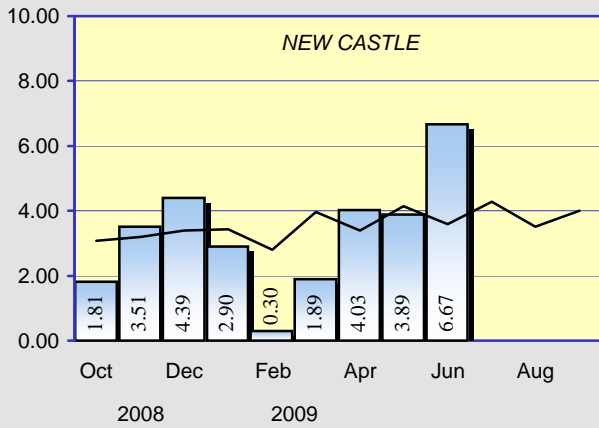
Brandywine Creek, drought of 2002  
Red Clay Creek, remnants of  
Tropical Storm Henri,  
September 15, 2003

Hydrography Digital Line Graph United States Geological Survey 1993  
Projection: UTM 18 Datum: NAD 83

Web Site: <http://www.udel.edu/dgs>

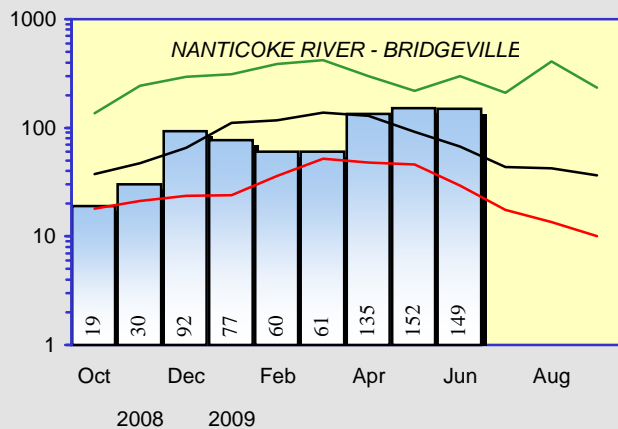
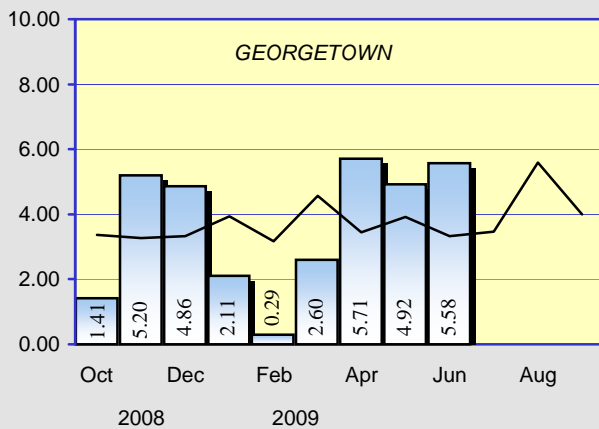
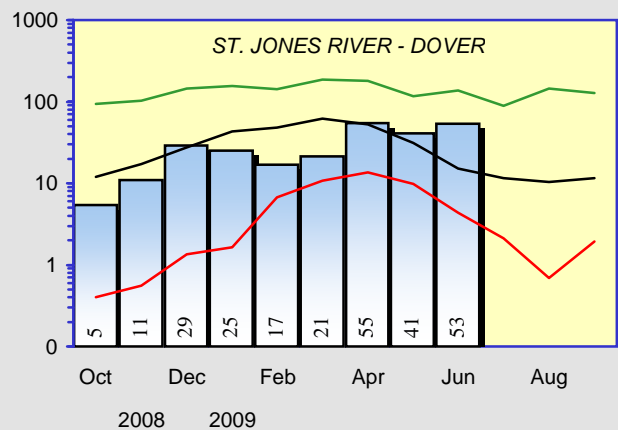
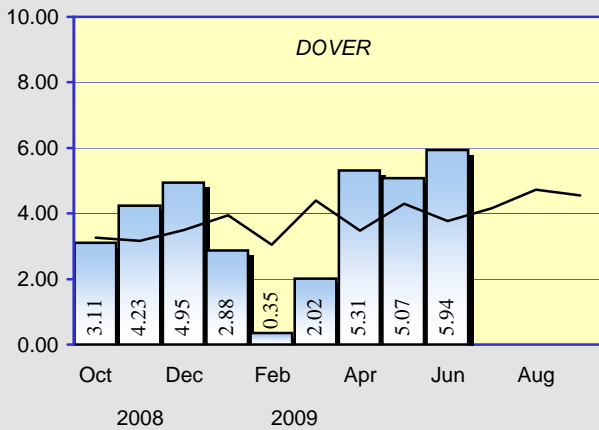
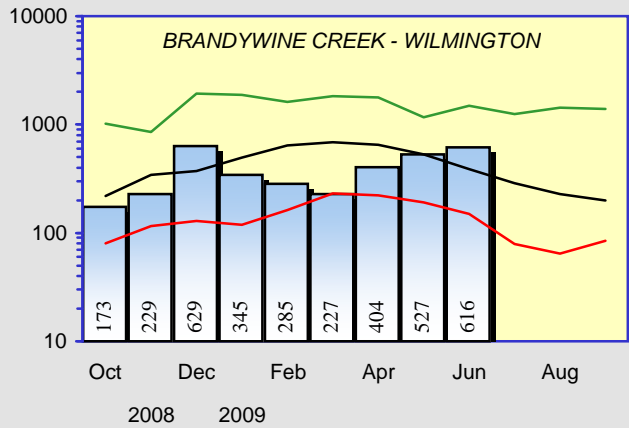
## PRECIPITATION



Monthly Total  
Measured in Inches

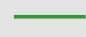
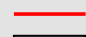
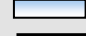



## STREAMFLOWS

Monthly Average - CFS  
(Provisional - Subject to Revision)

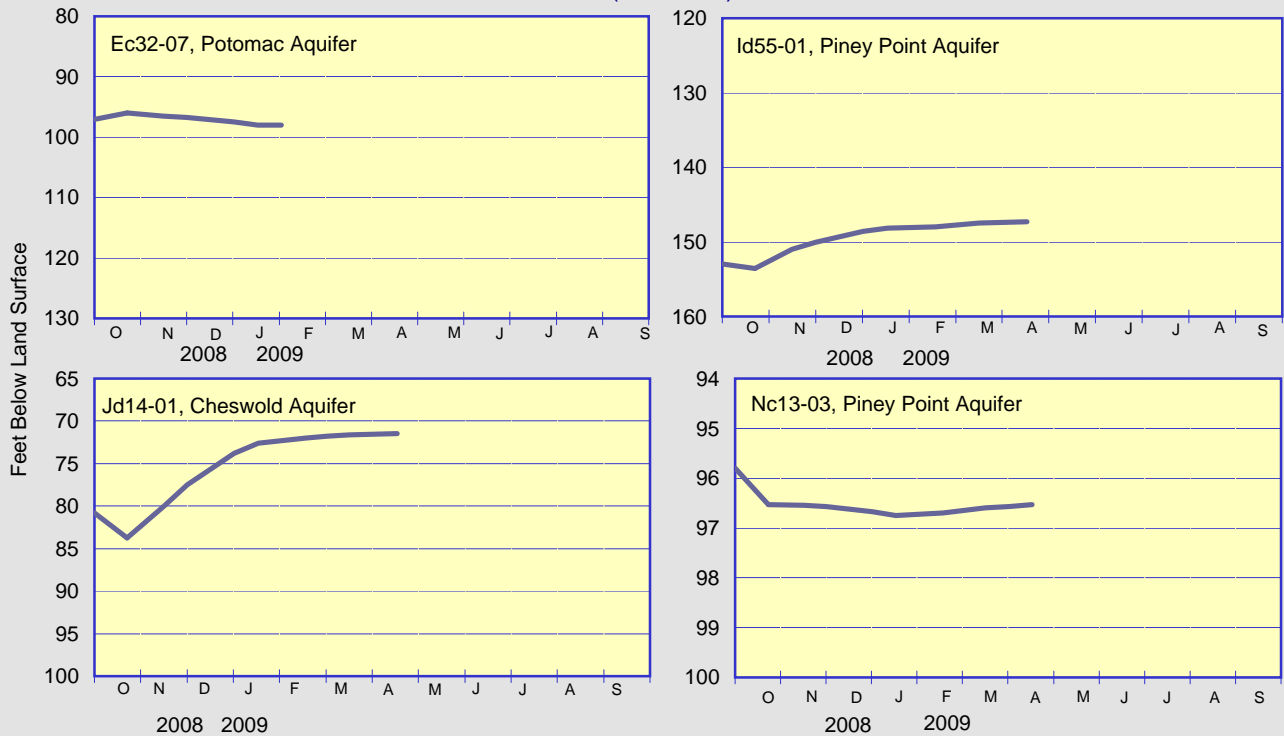


 Current monthly total  
 Long term average

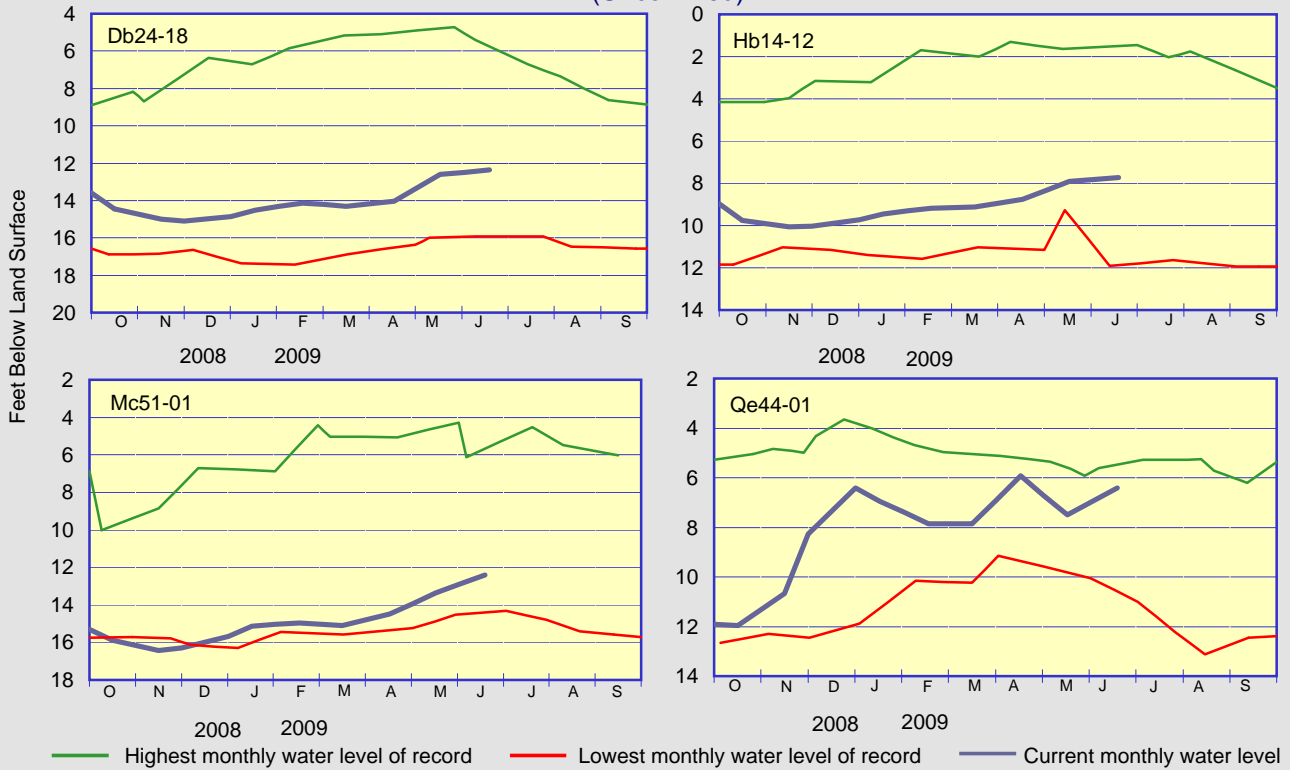
 Highest monthly mean discharge  
 Lowest monthly mean discharge  
 Current monthly mean discharge  
 Median monthly mean discharge

# GROUND-WATER LEVELS

## ARTESIAN WELLS (Confined)

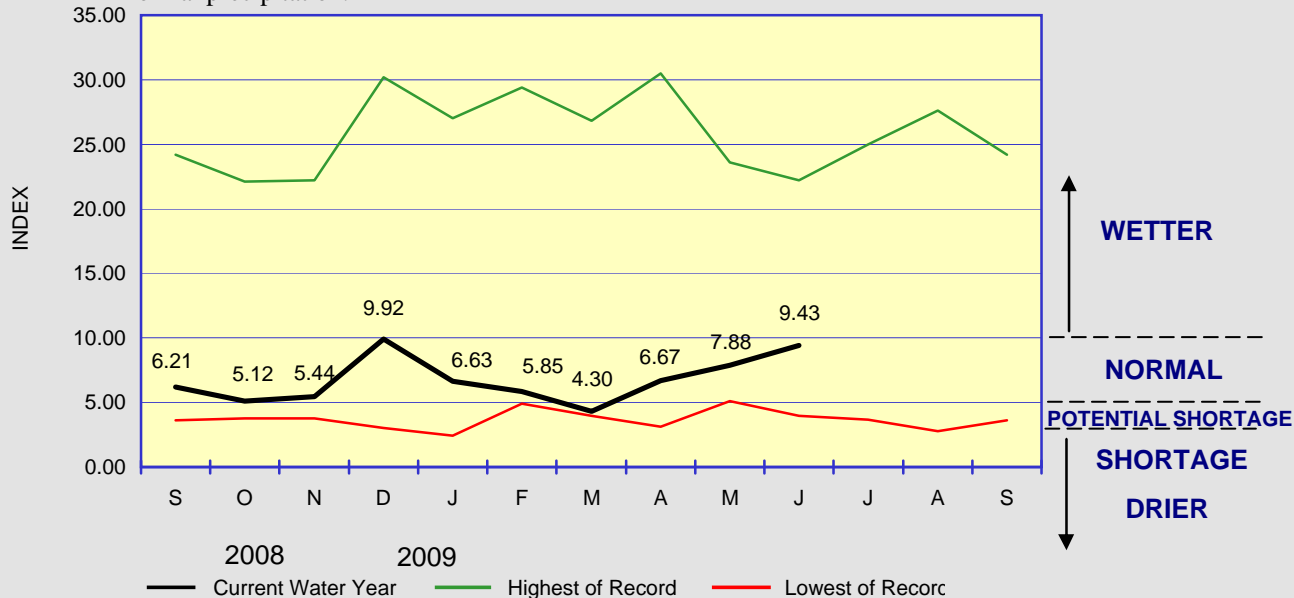


## WATER-TABLE WELLS (Unconfined)



## WATER CONDITIONS INDEX FOR NEW CASTLE COUNTY

The Water Conditions Index continued to rise to the upper end of the Normal range during the month of June. Above-normal precipitation across the state during June led to above-normal flows on the Brandywine River in New Castle County, on the St. Jones River in Kent County, and on the Nanticoke River in Sussex County. The third-highest flow of record occurred on the Nanticoke. Ground-water levels continued to rise throughout the state due to the above-normal precipitation.



Delaware Geological Survey  
University of Delaware  
Newark, DE 19716

*Summary of Water Conditions in Delaware* is published by the Delaware Geological Survey, a State agency established by an Act of the Delaware General Assembly in 1951 and organized as a unit of the University of Delaware.  
John H. Talley  
*Director and State Geologist*  
John H. Talley and Stefanie J. Baxter  
*Editors, Summary of Water Conditions in Delaware*

CHANGE OF ADDRESS?  
Send mailing label and your new address, and/or

REQUESTS FOR PUBLICATIONS to:  
Laura Wisk  
Delaware Geological Survey  
University of Delaware  
Newark, DE 19716-7501  
302-831-2834  
delgeosurvey@udel.edu  
www.dgs.udel.edu