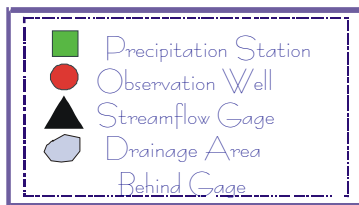
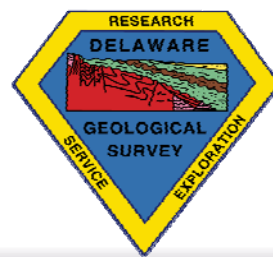
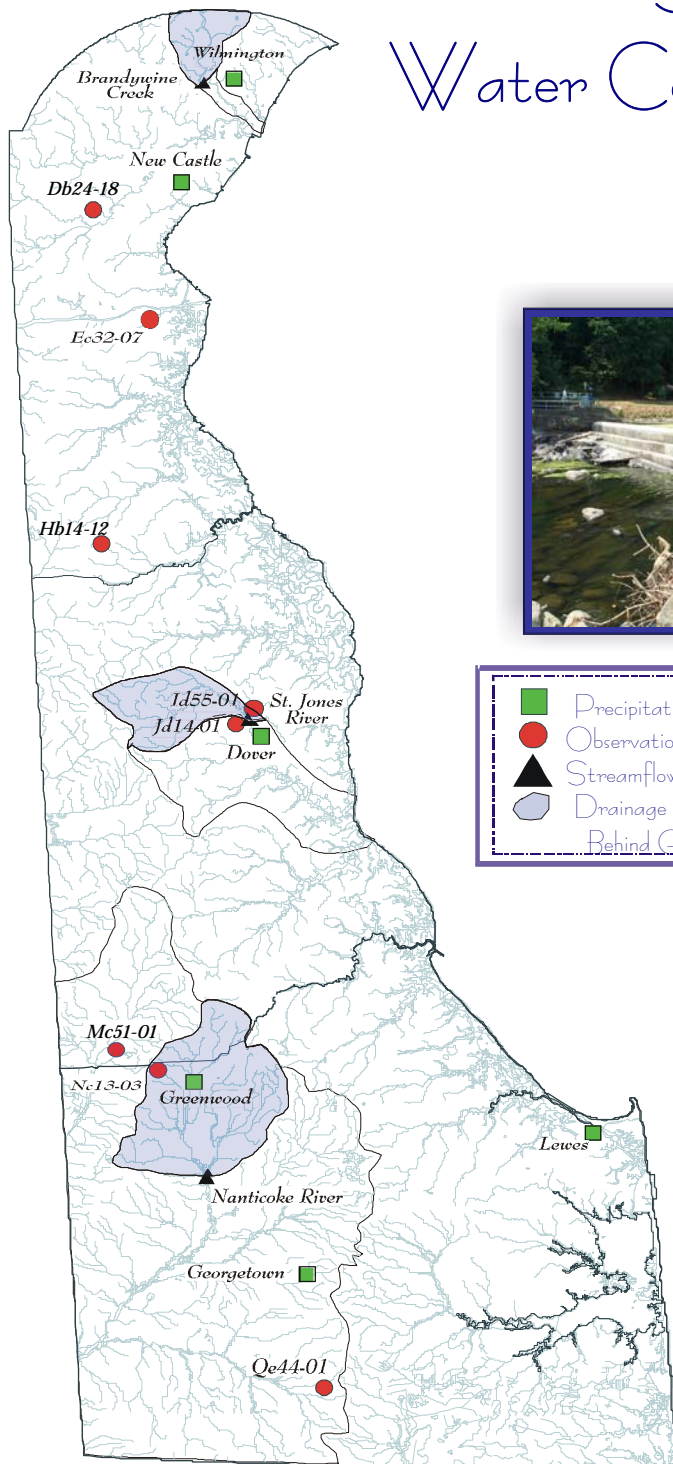


DELAWARE GEOLOGICAL SURVEY

Summary of Water Conditions in Delaware Water Year 2008 June, 2008



Compiled by J. H. Talley and S. J. Baxter

Acknowledgments

U. S. Geological Survey
National Weather Service
Delaware Department of Transportation
Delaware State Climatologist
University of Delaware
City of Dover
City of Lewes
City of Wilmington
Connie Swartzentruber

Photos

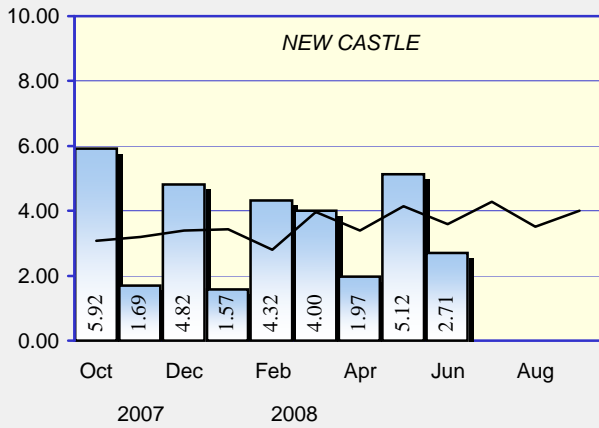
Brandywine Creek, drought of 2002
Red Clay Creek, remnants of
Tropical Storm Henri,
September 15, 2003

Hydrography Digital Line Graph United States Geological Survey 1993
Projection: UTM 18 Datum: NAD 83

Web Site: <http://www.udel.edu/dgs>

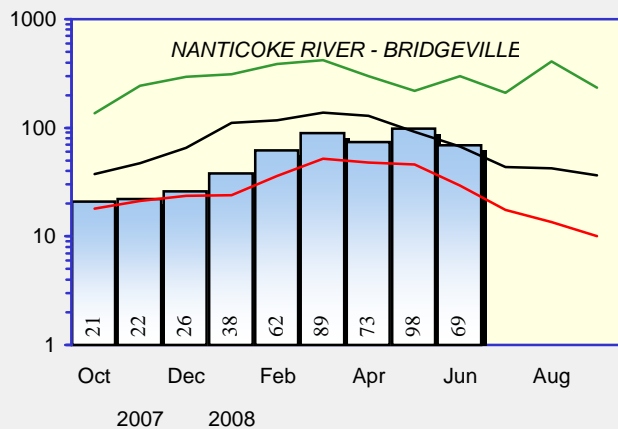
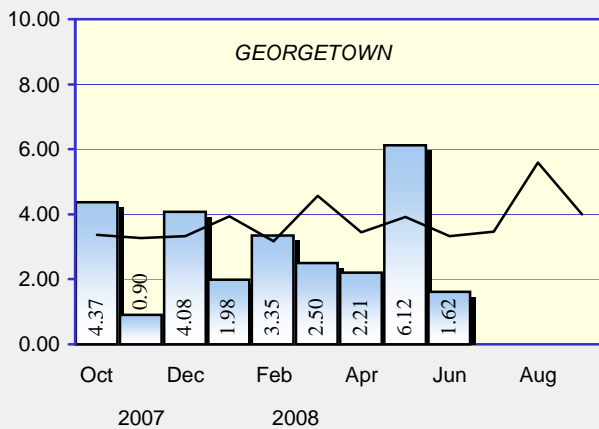
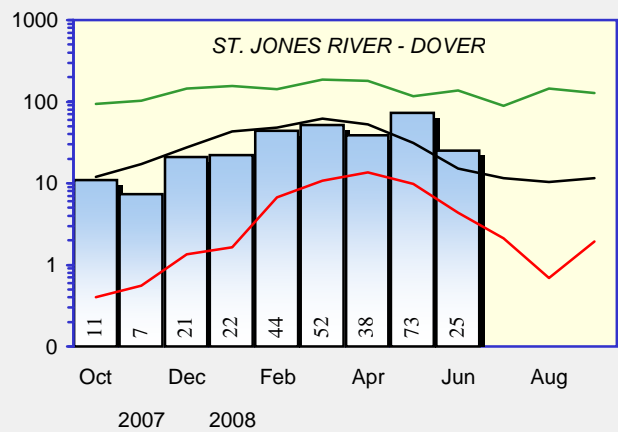
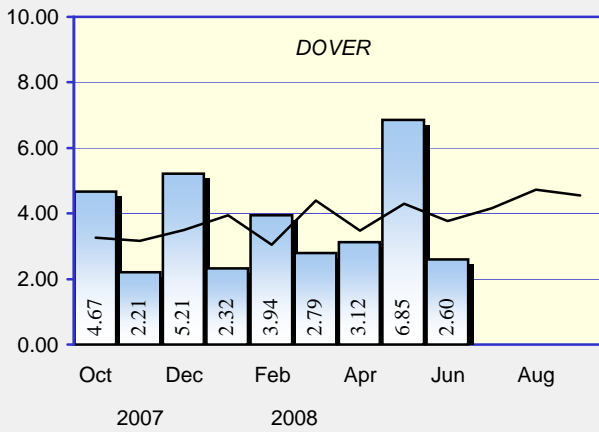
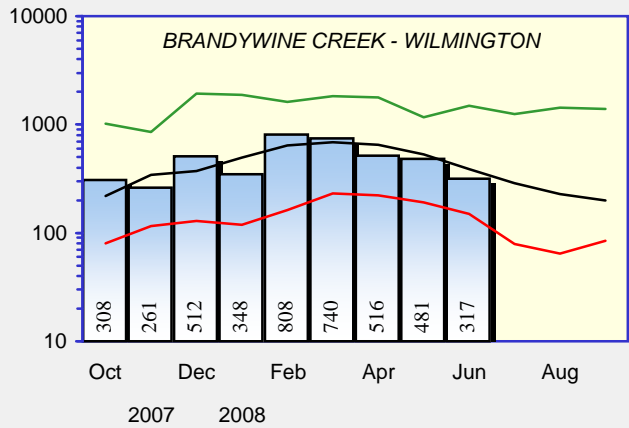
PRECIPITATION

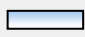

Monthly Total
Measured in Inches

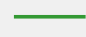
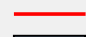
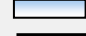



STREAMFLOWS

Monthly Average - CFS
(Provisional - Subject to Revision)

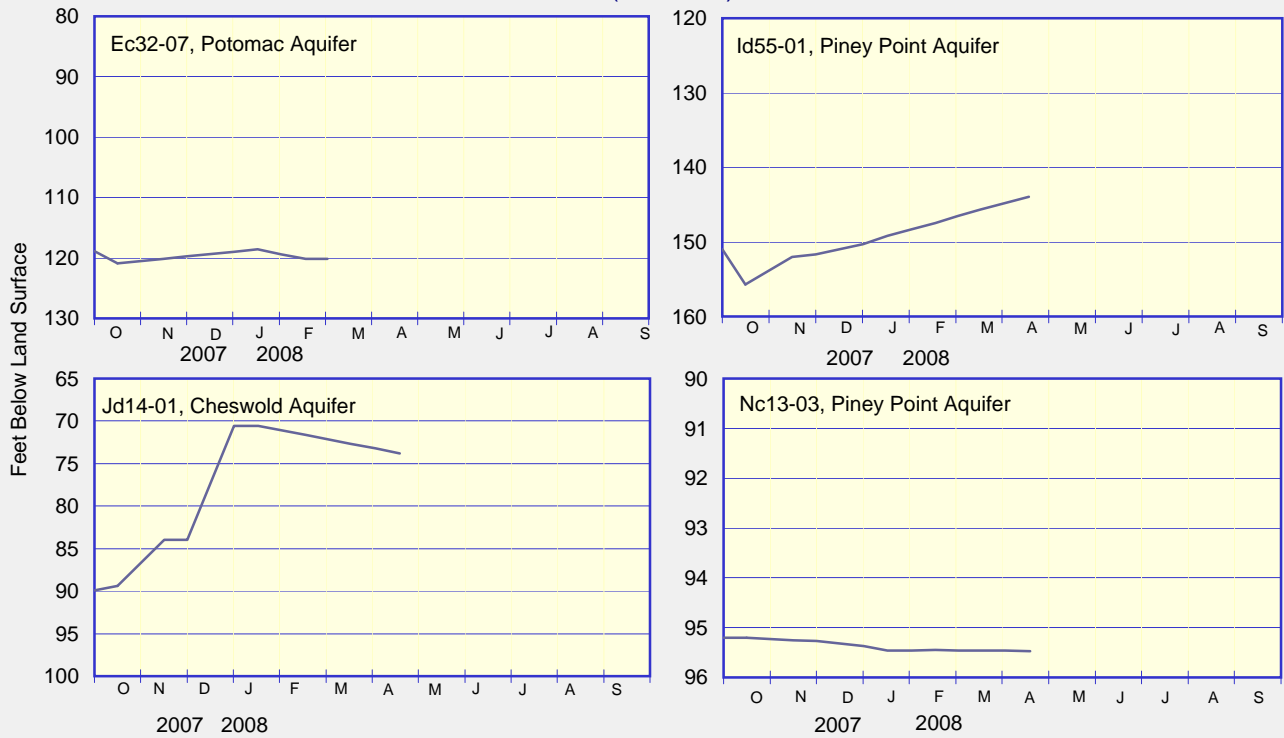


 Current monthly total
 Long term average

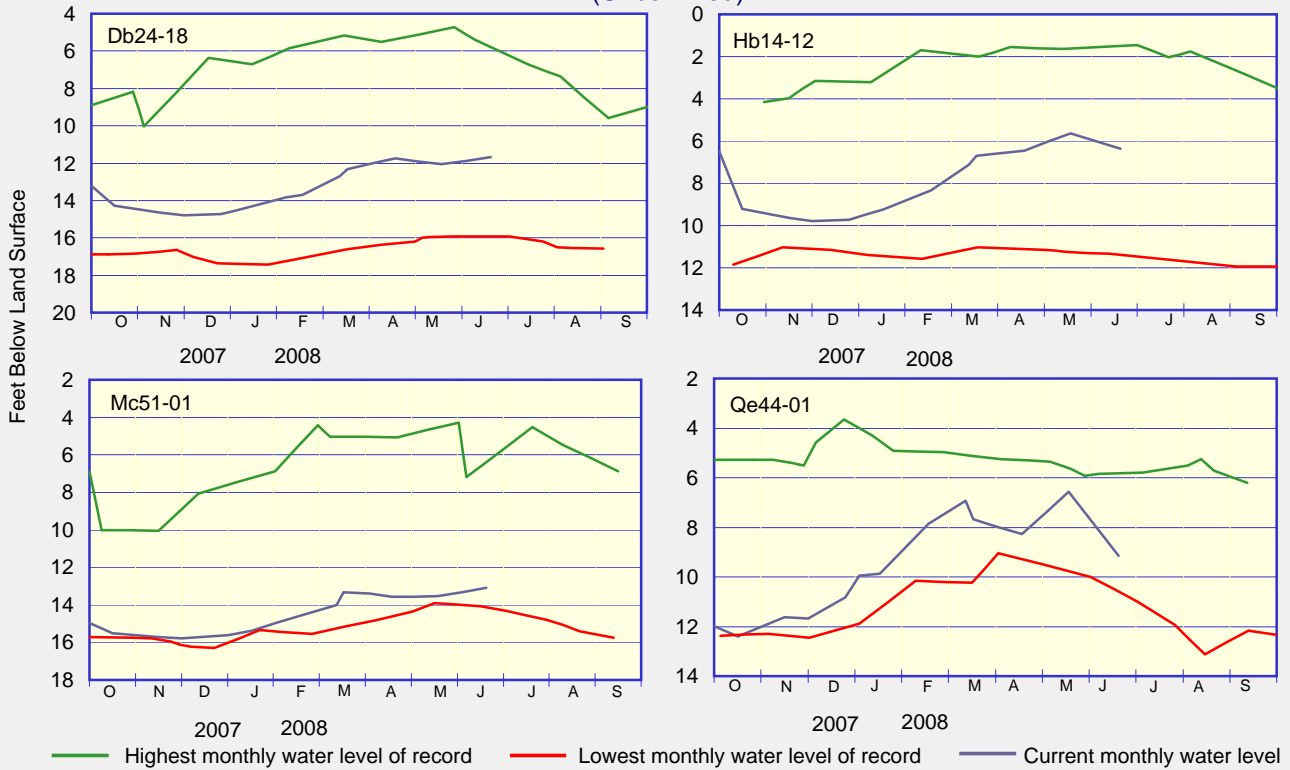
 Highest monthly mean discharge
 Lowest monthly mean discharge
 Current monthly mean discharge
 Median monthly mean discharge

GROUND-WATER LEVELS

ARTESIAN WELLS (Confined)

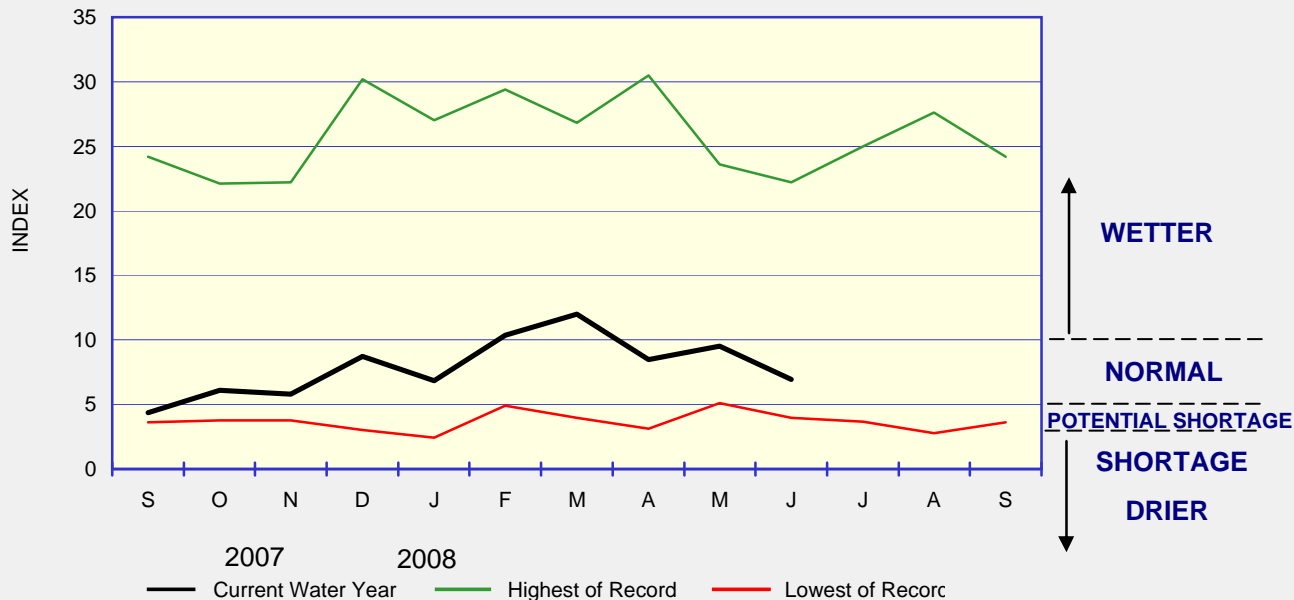


WATER-TABLE WELLS (Unconfined)



WATER CONDITIONS INDEX FOR NEW CASTLE COUNTY

The Water Conditions Index dropped to mid-Normal range during the month of June due to below normal precipitation in northern New Castle County. The ground-water level in well Db24-18 rose slightly and is expected to continue to rise if the area receives normal to above precipitation in the coming months.



Delaware Geological Survey
 University of Delaware
 Newark, DE 19716

Summary of Water Conditions in Delaware is published by the Delaware Geological Survey, a State agency established by an Act of the Delaware General Assembly in 1951 and organized as a unit of the University of Delaware.
 John H. Talley
Director and State Geologist
 John H. Talley and Stefanie J. Baxter
Editors, Summary of Water Conditions in Delaware

CHANGE OF ADDRESS?
 Send mailing label and your new address, and/or

REQUESTS FOR PUBLICATIONS to:
 Laura Wisk
 Delaware Geological Survey
 University of Delaware
 Newark, DE 19716-7501
 302-831-2834
 delgeosurvey@udel.edu
 www.udel.edu/dgs