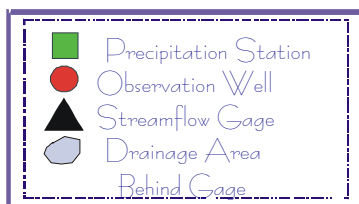
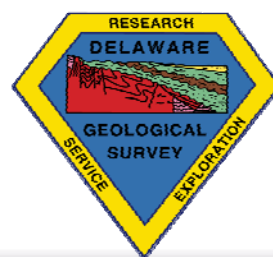
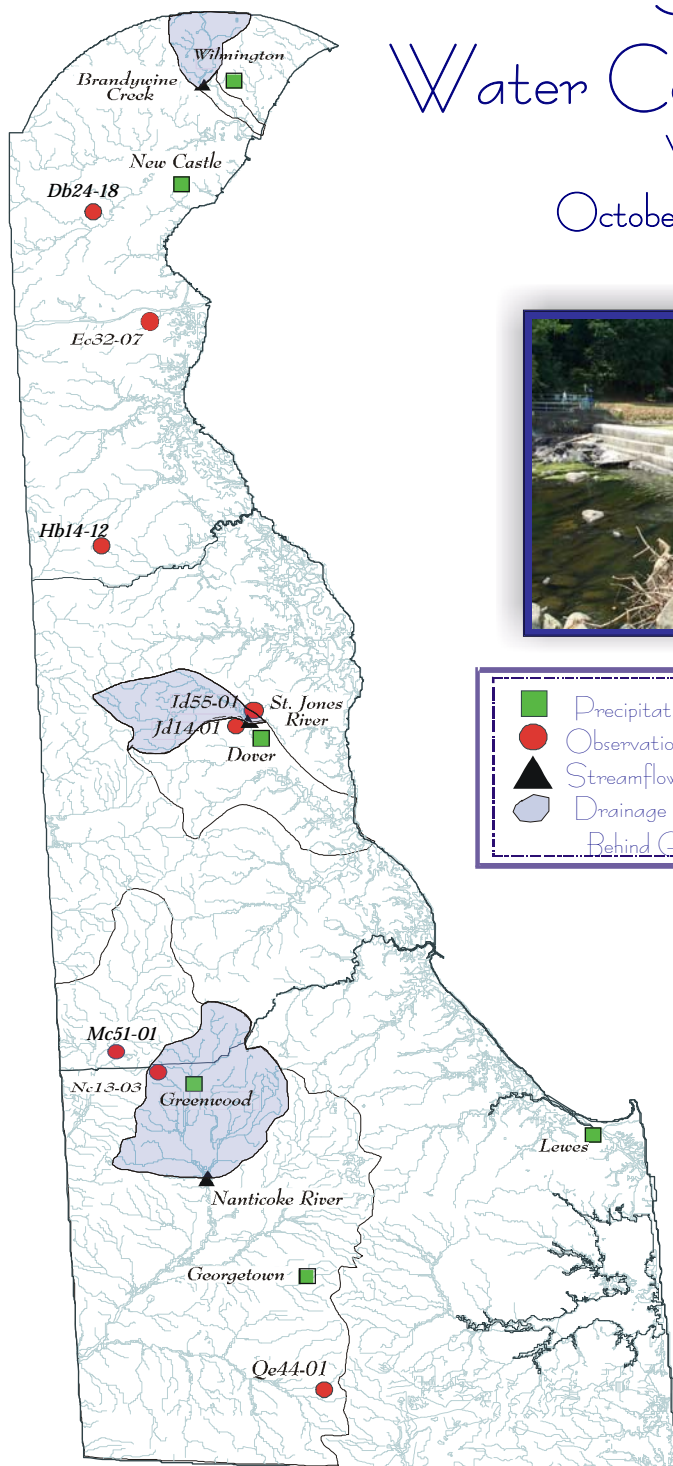


# DELAWARE GEOLOGICAL SURVEY

## Summary of Water Conditions in Delaware Water Year 2009 October, 2008 - January, 2009



Compiled by J. H. Talley and S. J. Baxter

### Acknowledgments

U. S. Geological Survey  
National Weather Service  
Delaware Department of Transportation  
Delaware State Climatologist  
University of Delaware  
City of Dover  
City of Lewes  
City of Wilmington  
Connie Swartzentruber

### Photos

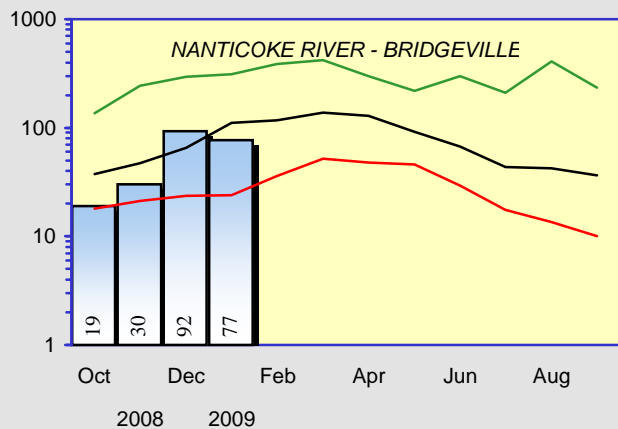
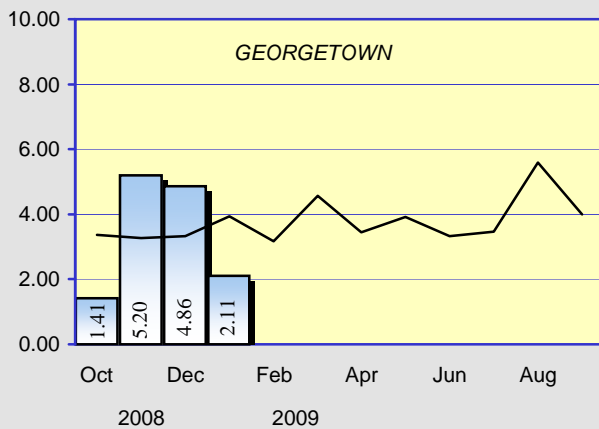
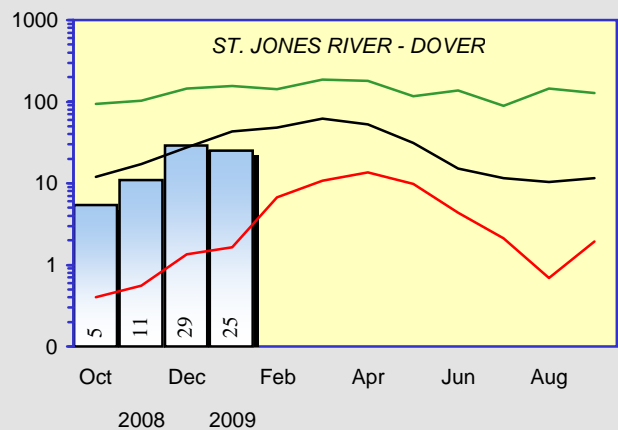
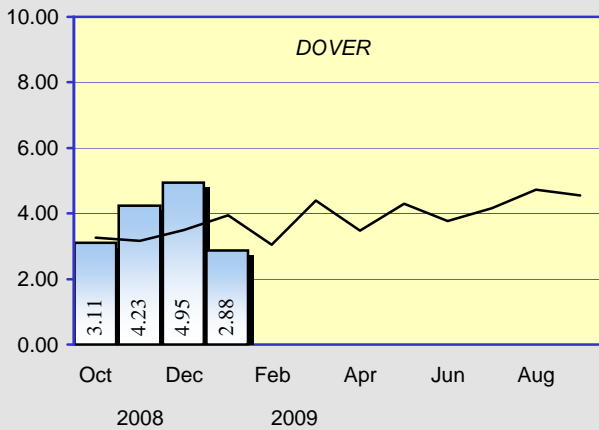
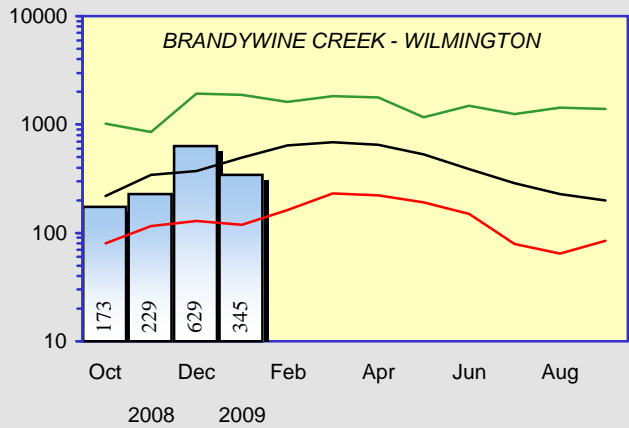
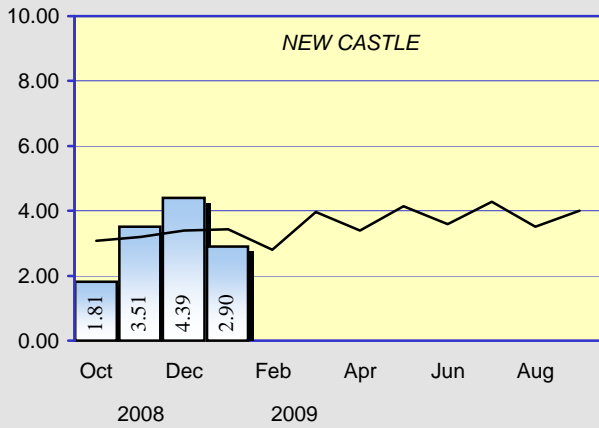
Brandywine Creek, drought of 2002  
Red Clay Creek, remnants of  
Tropical Storm Henri,  
September 15, 2003

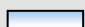

Hydrography Digital Line Graph United States Geological Survey 1993  
Projection: UTM 18 Datum: NAD 83



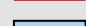
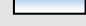
Web Site: <http://www.udel.edu/dgs>

## PRECIPITATION

Monthly Total  
Measured in Inches

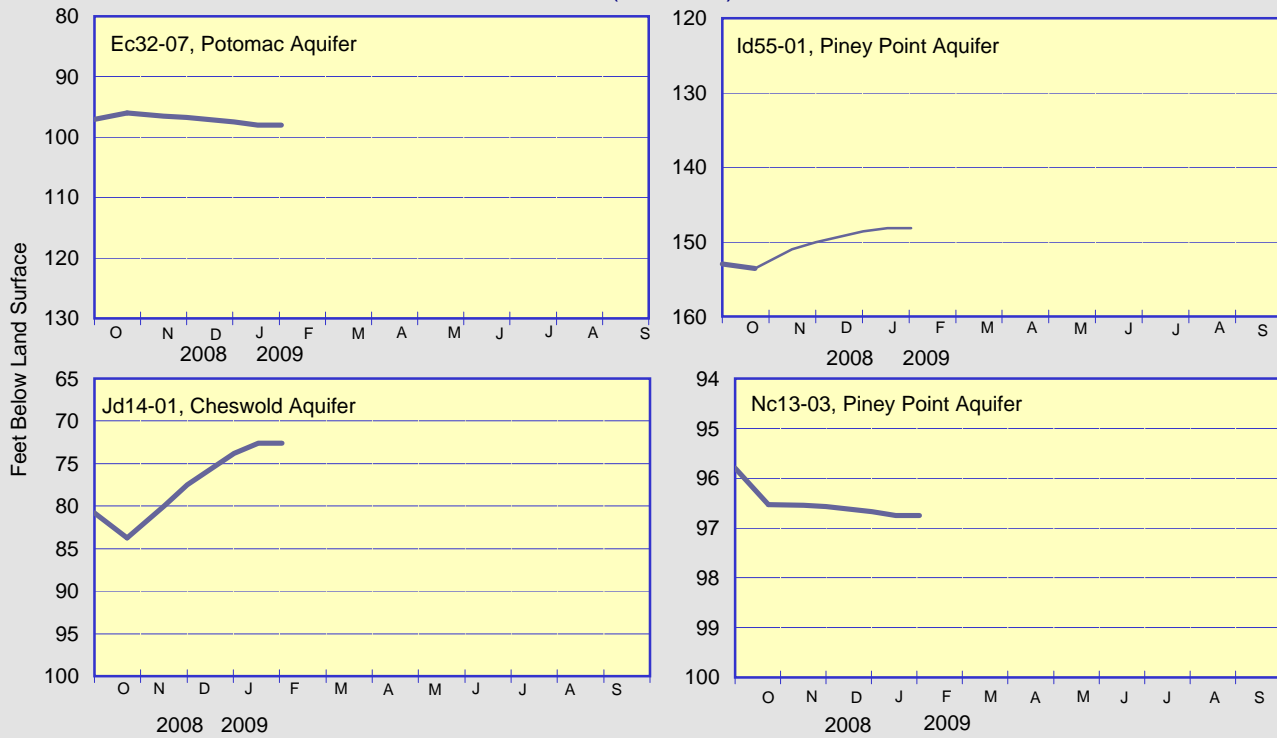


 Current monthly total  
 Long term average

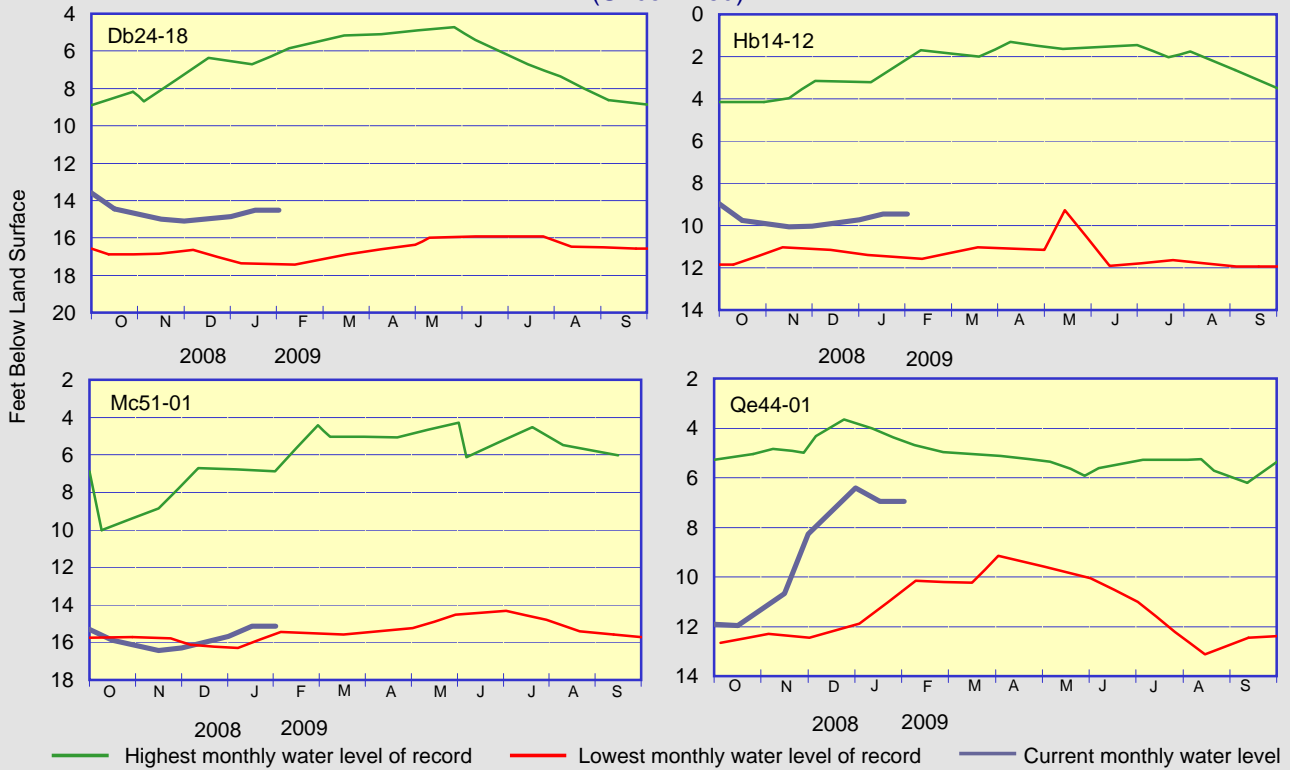
 Highest monthly mean discharge  
 Lowest monthly mean discharge  
 Current monthly mean discharge  
 Median monthly mean discharge

# GROUND-WATER LEVELS

## ARTESIAN WELLS (Confined)

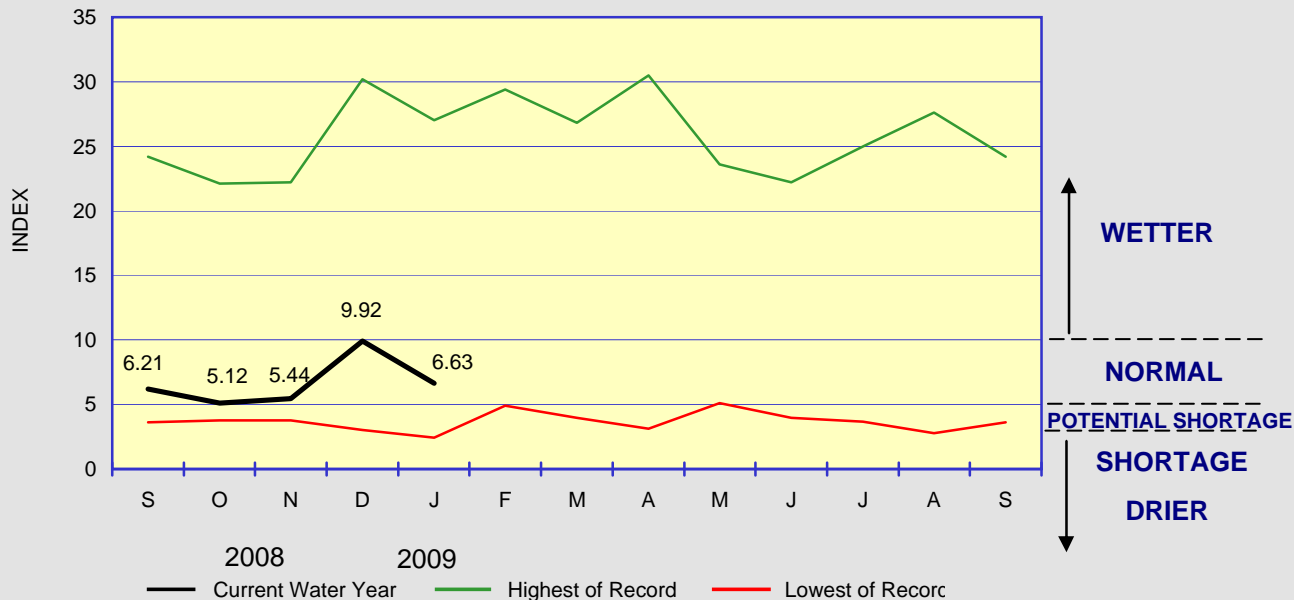


## WATER-TABLE WELLS (Unconfined)



## WATER CONDITIONS INDEX FOR NEW CASTLE COUNTY

The Water Conditions Index declined to mid-Normal range during the month of January. Below-normal precipitation recorded at both Wilmington Airport and Porter Reservoirs led to decreased flow on the Brandywine River and a slightly lower Index than last month. There was a slight increase in the ground-water level in well Db24-18. With normal to above normal precipitation over the next couple of months, we should start to see the water levels increase.



Delaware Geological Survey  
 University of Delaware  
 Newark, DE 19716

*Summary of Water Conditions in Delaware* is published by the Delaware Geological Survey, a State agency established by an Act of the Delaware General Assembly in 1951 and organized as a unit of the University of Delaware.  
 John H. Talley  
*Director and State Geologist*  
 John H. Talley and Stefanie J. Baxter  
*Editors, Summary of Water Conditions in Delaware*

CHANGE OF ADDRESS?  
 Send mailing label and your new address, and/or

REQUESTS FOR PUBLICATIONS to:  
 Laura Wisk  
 Delaware Geological Survey  
 University of Delaware  
 Newark, DE 19716-7501  
 302-831-2834  
 delgeosurvey@udel.edu  
 www.udel.edu/dgs