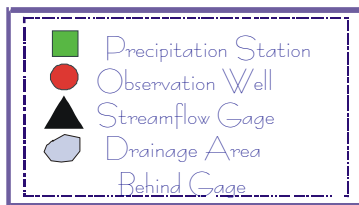
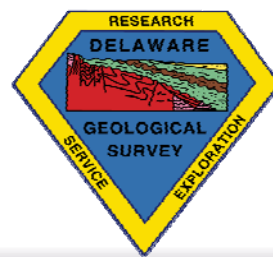
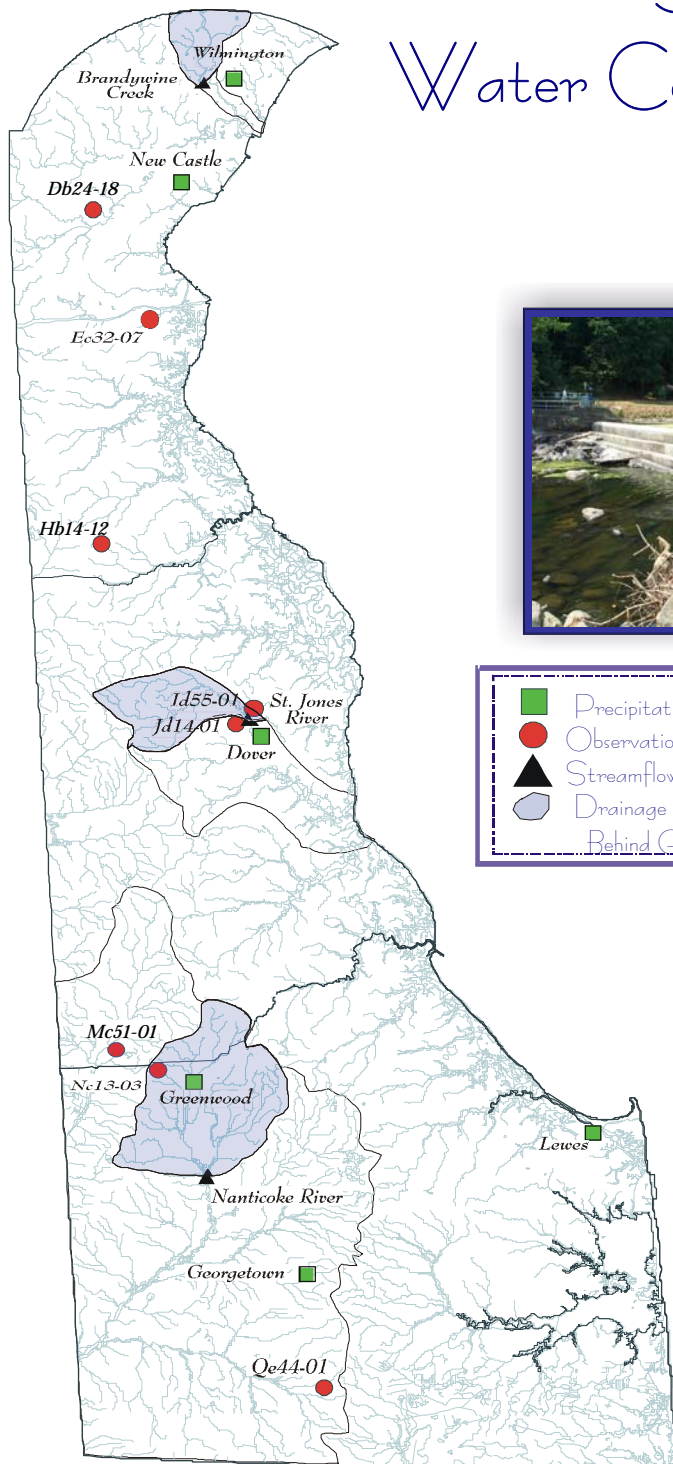


# DELAWARE GEOLOGICAL SURVEY

## Summary of Water Conditions in Delaware Water Year 2008 December, 2007



Compiled by J. H. Talley and S. J. Baxter

### Acknowledgments

U. S. Geological Survey  
National Weather Service  
Delaware Department of Transportation  
Delaware State Climatologist  
University of Delaware  
City of Dover  
City of Lewes  
City of Wilmington  
Connie Swartzentruber

### Photos

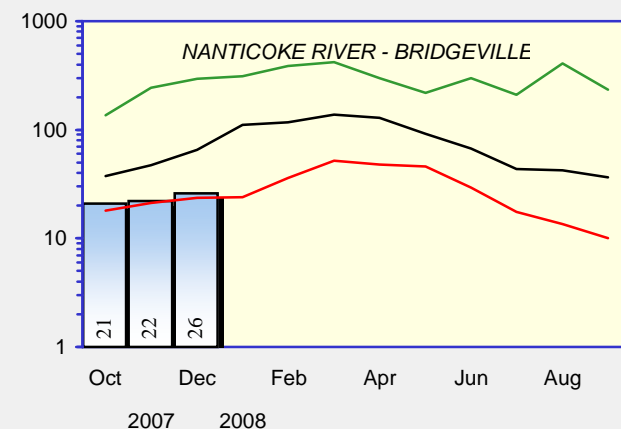
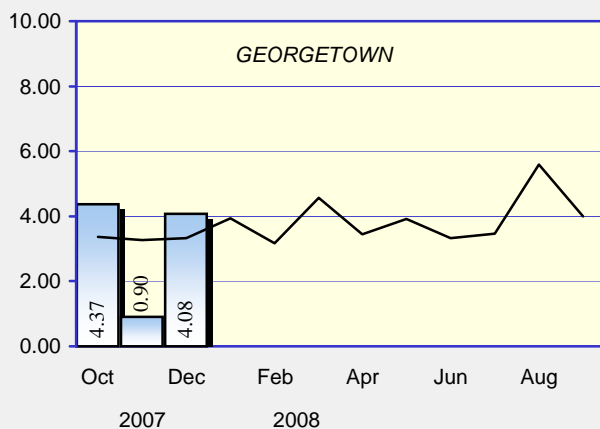
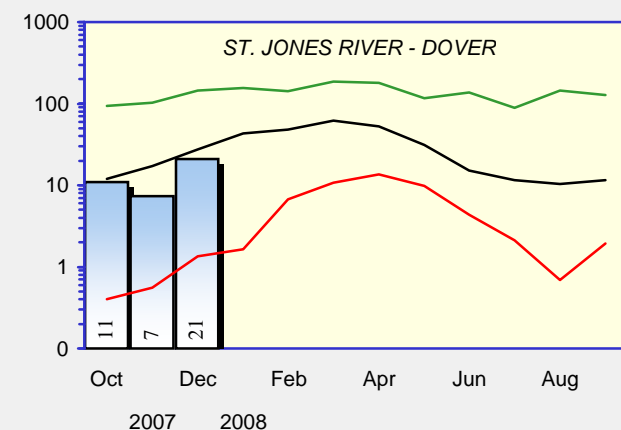
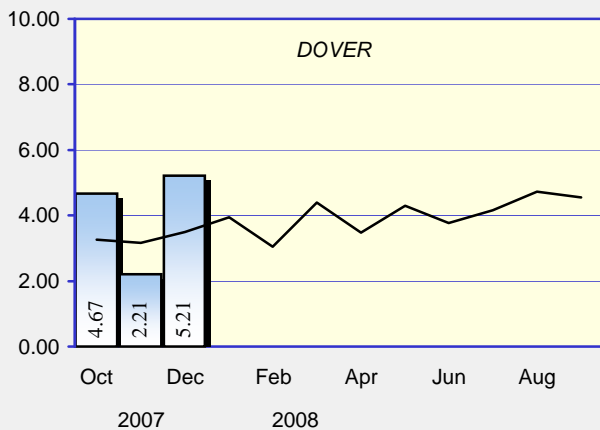
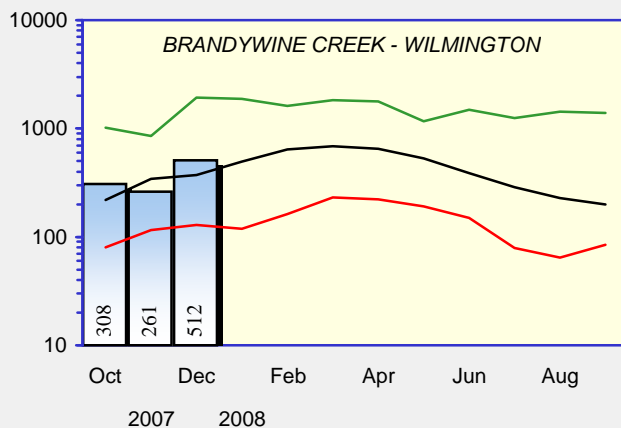
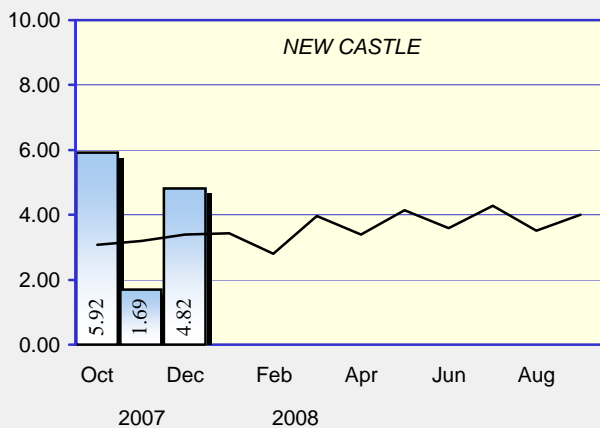
Brandywine Creek, drought of 2002  
Red Clay Creek, remnants of  
Tropical Storm Henri,  
September 15, 2003



Hydrography Digital Line Graph United States Geological Survey 1993  
Projection: UTM 18 Datum: NAD 83





Web Site: <http://www.udel.edu/dgs>

## PRECIPITATION

Monthly Total  
Measured in Inches

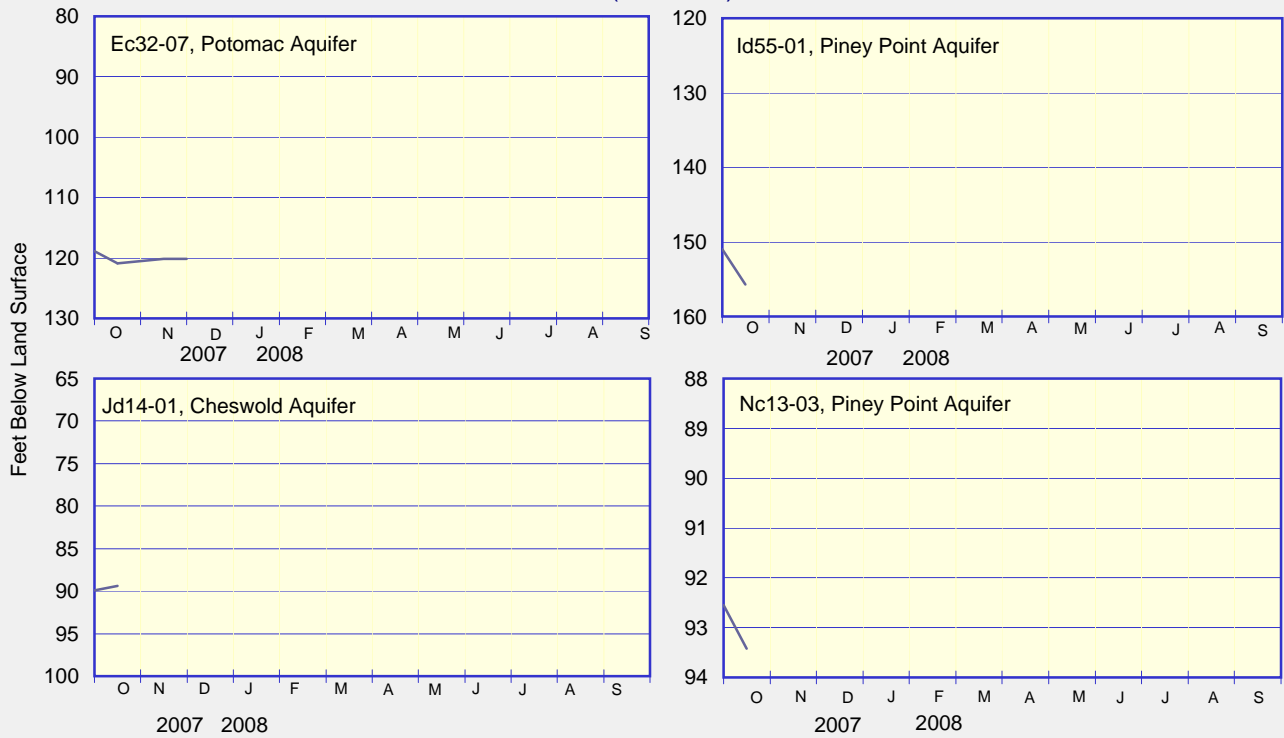


 Current monthly total  
 Long term average

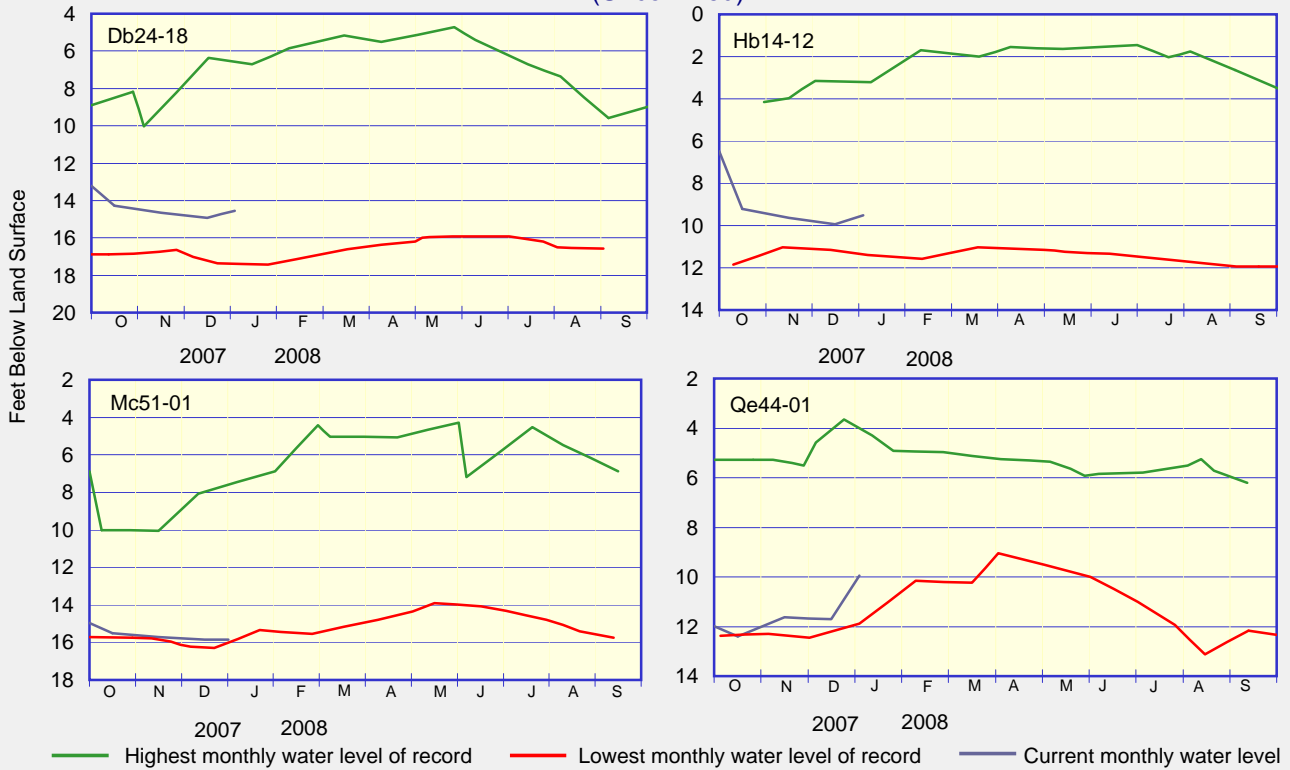
 Highest monthly mean discharge  
 Lowest monthly mean discharge  
 Current monthly mean discharge  
 Median monthly mean discharge

# GROUND-WATER LEVELS

## ARTESIAN WELLS (Confined)

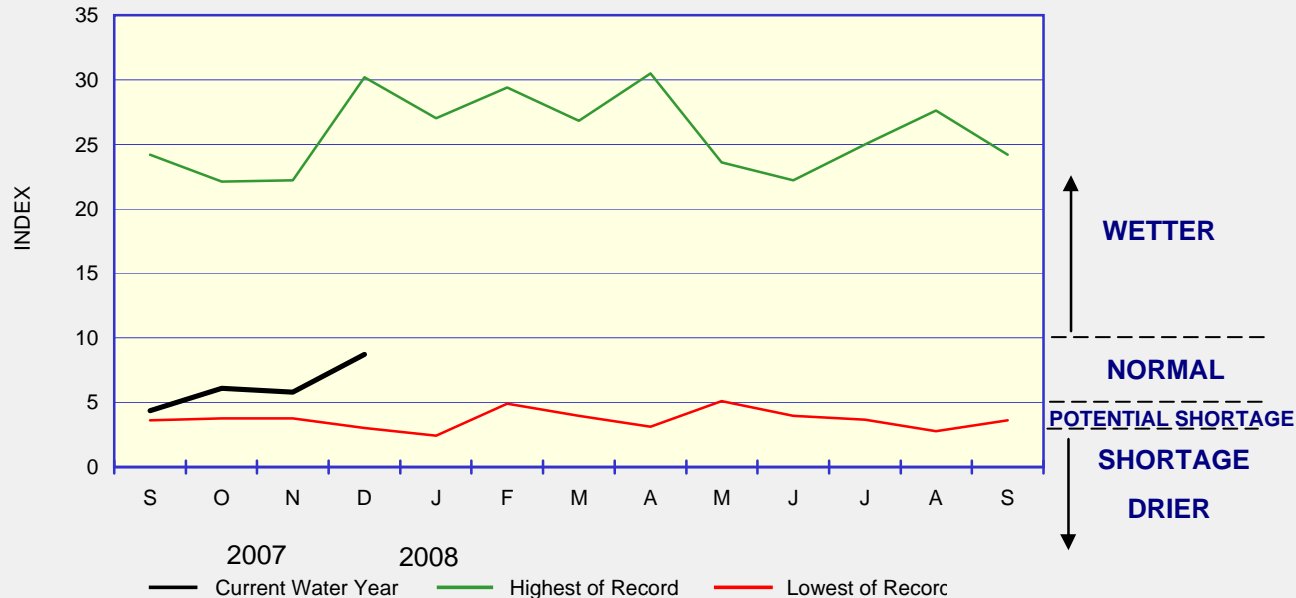


## WATER-TABLE WELLS (Unconfined)



## WATER CONDITIONS INDEX FOR NEW CASTLE COUNTY

The Water Conditions Index rose into the upper end of the Normal range during the month of December, which is the highest it has been since June 2006. Above-normal precipitation for the month of December contributed to an increase in streamflows in New Castle County. Ground-water levels rose slightly in response to above-normal precipitation during the months of October and December.



Delaware Geological Survey  
University of Delaware  
Newark, DE 19716

*Summary of Water Conditions in Delaware* is published by the Delaware Geological Survey, a State agency established by an Act of the Delaware General Assembly in 1951 and organized as a unit of the University of Delaware.

John H. Talley

*Director and State Geologist*

John H. Talley and Stefanie J. Baxter

*Editors, Summary of Water Conditions in Delaware*

CHANGE OF ADDRESS?

Send mailing label and your new address, and/or

REQUESTS FOR PUBLICATIONS to:

Laura Wisk

Delaware Geological Survey

University of Delaware

Newark, DE 19716-7501

302-831-2834

delgeosurvey@udel.edu

www.udel.edu/dgs