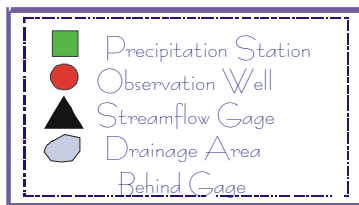
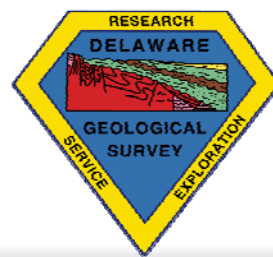
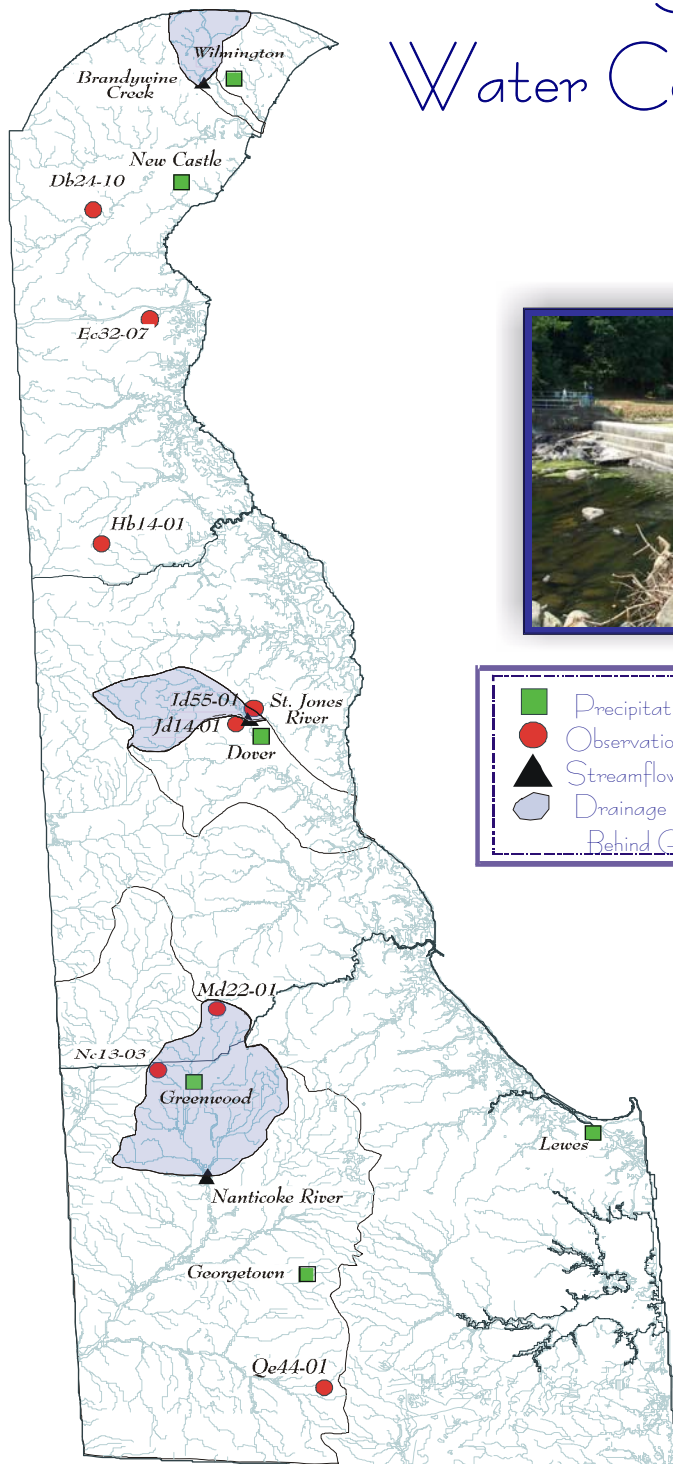


DELAWARE GEOLOGICAL SURVEY

Summary of Water Conditions in Delaware Water Year 2006 December, 2005



Compiled by J. H. Talley and S. J. Baxter

Acknowledgments
 U. S. Geological Survey
 National Weather Service
 Delaware Department of Transportation
 University of Delaware
 City of Dover
 City of Lewes
 City of Wilmington
 Daniel and Connie Swartzentruber

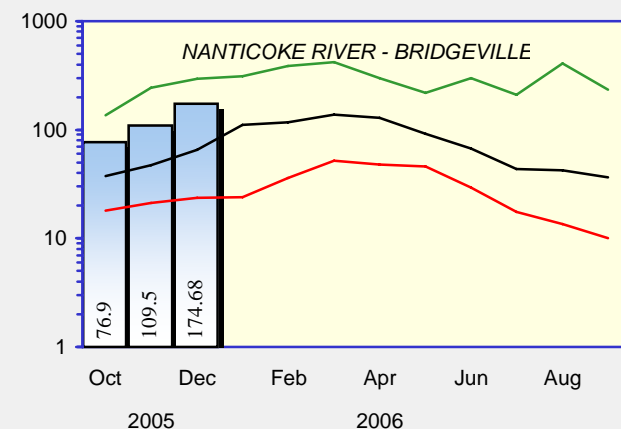
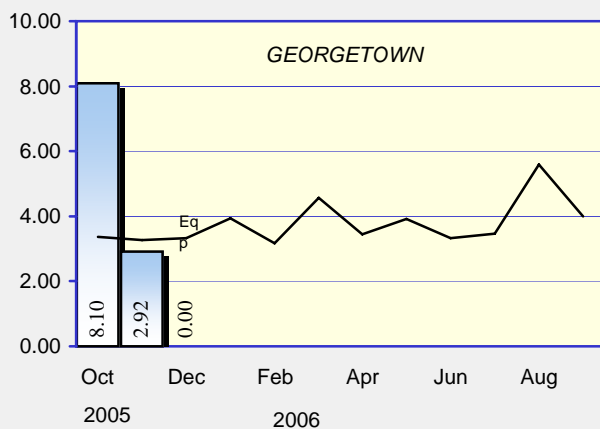
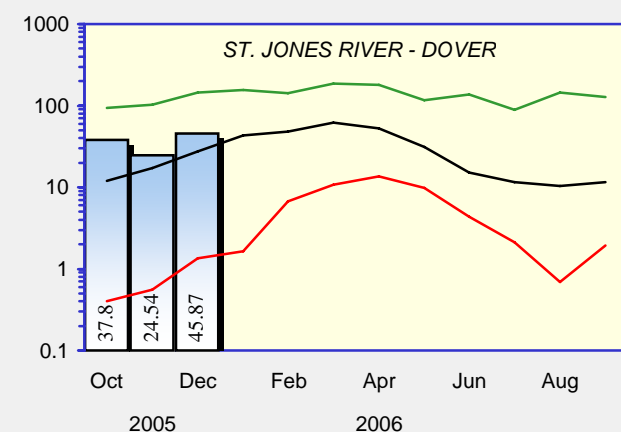
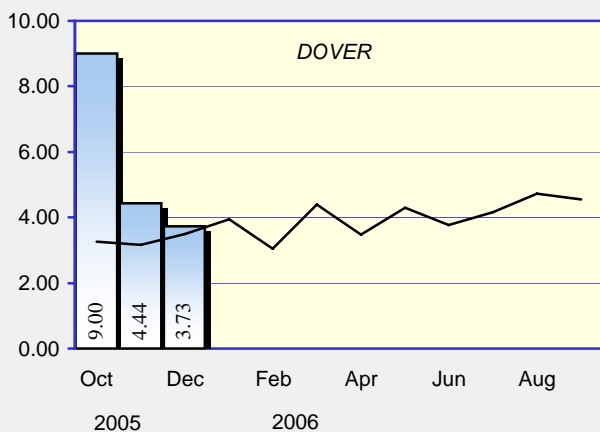
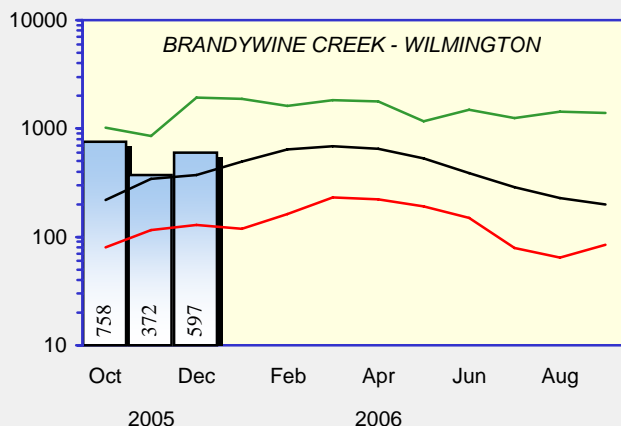
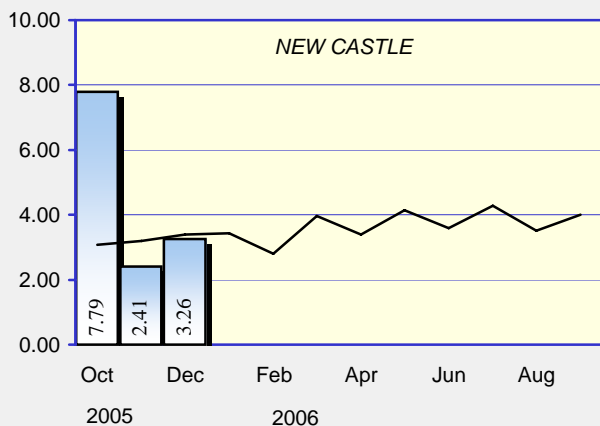
Photos
 Brandywine Creek, drought of 2002
 Red Clay Creek, remnants of
 Tropical Storm Henri,
 September 15, 2003



Hydrography Digital Line Graph United States Geological Survey 1993
 Projection: UTM 18 Datum: NAD 83



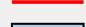
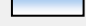
Web Site: <http://www.udel.edu/dgs>

PRECIPITATION

Monthly Total
Measured in Inches

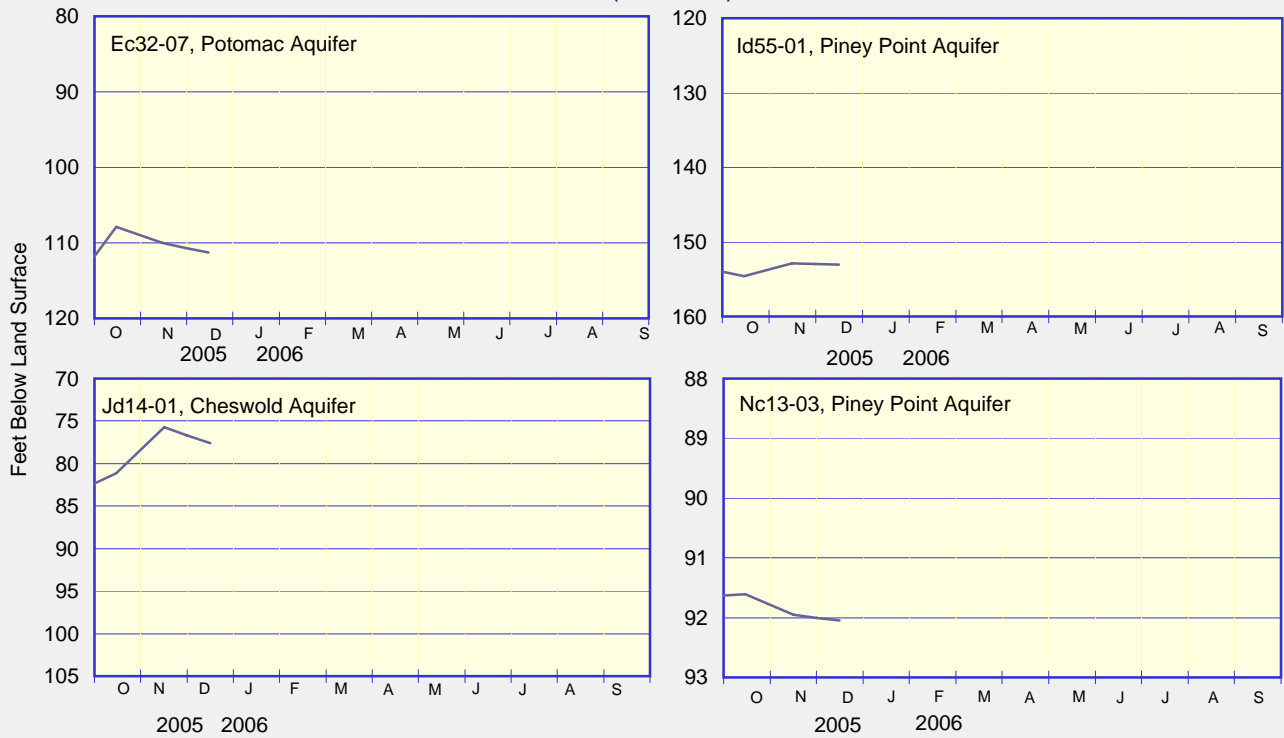


 Current monthly total
 Long term average

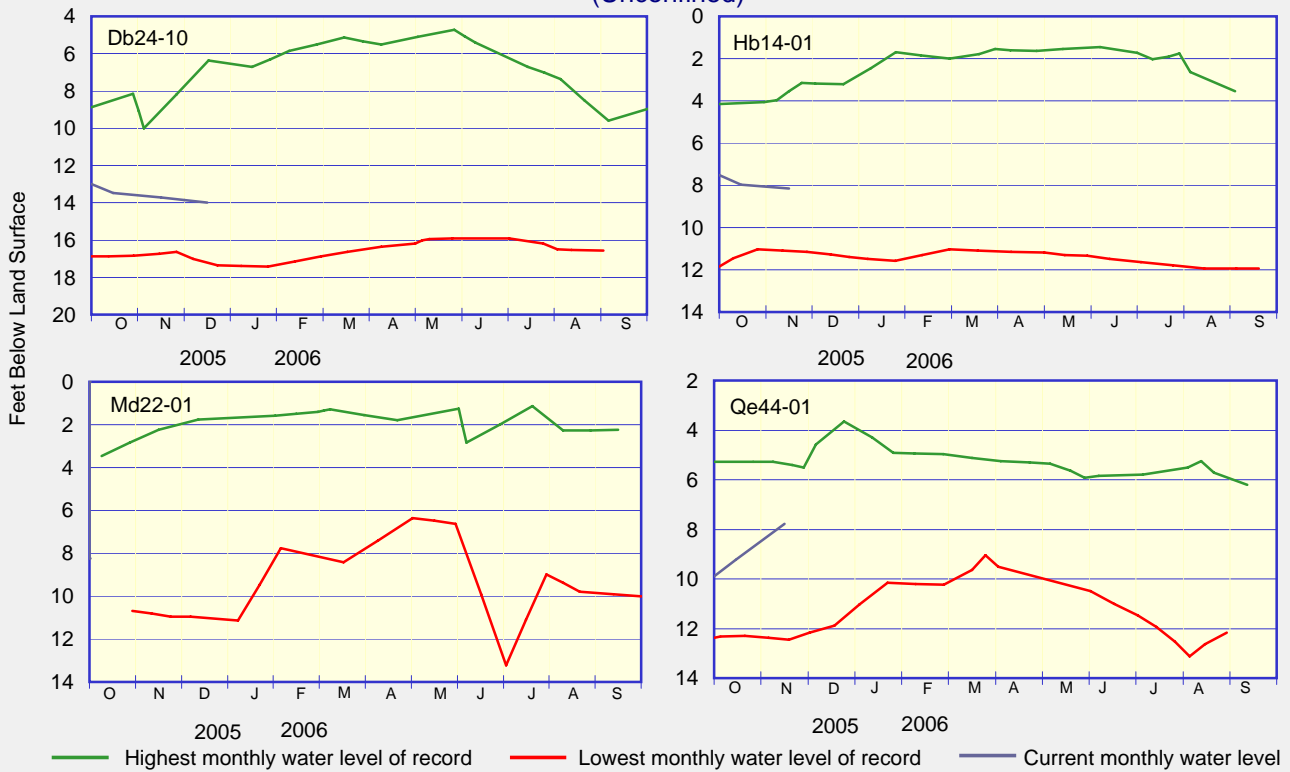
 Highest monthly mean discharge
 Lowest monthly mean discharge
 Current monthly mean discharge
 Median monthly mean discharge

GROUND-WATER LEVELS

ARTESIAN WELLS (Confined)

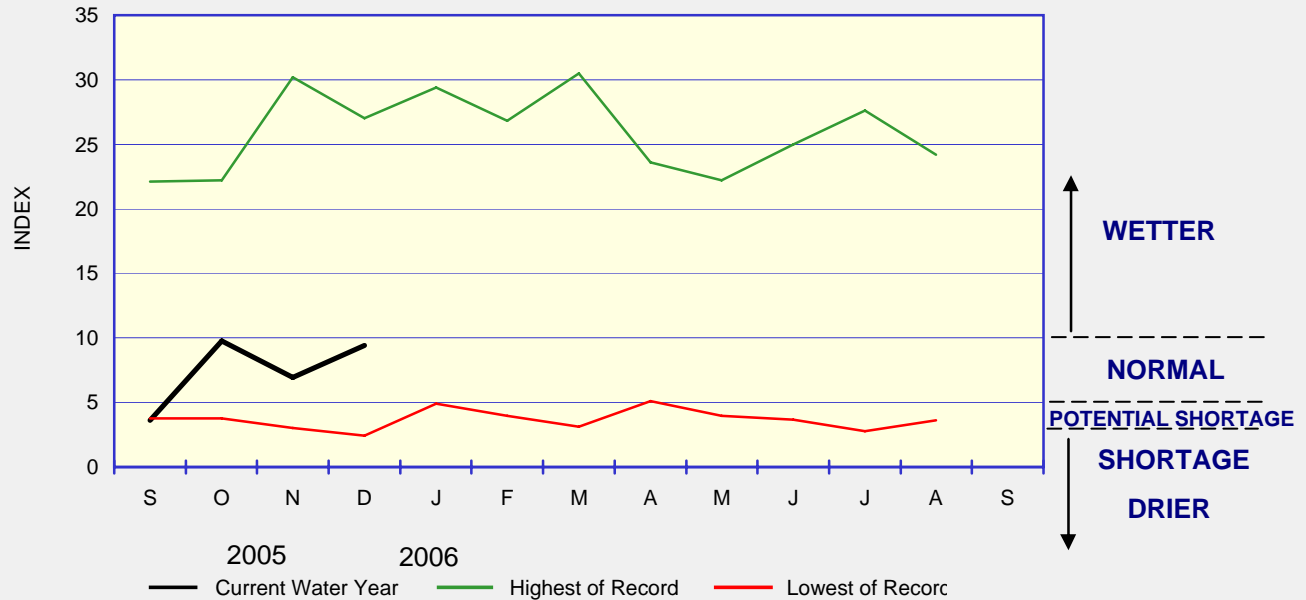


WATER-TABLE WELLS (Unconfined)



WATER CONDITIONS INDEX FOR NEW CASTLE COUNTY

The Water Conditions Index for New Castle County increased in December to the high end of the "Normal" range following a slight decrease of the Index in November. The increase is due to normal rainfall that occurred at Wilmington Airport (New Castle) and Porter Reservoir during the month of December.



Delaware Geological Survey
 University of Delaware
 Newark, DE 19716

Summary of Water Conditions in Delaware is published by the Delaware Geological Survey, a State agency established by an Act of the Delaware General Assembly in 1951 and organized as a unit of the University of Delaware.
 John H. Talley
Director and State Geologist
 John H. Talley and Stefanie J. Baxter
Editors, Summary of Water Conditions in Delaware

CHANGE OF ADDRESS?
 Send mailing label and your new address, and/or

REQUESTS FOR PUBLICATIONS to:
 Dorothy Windish
 Delaware Geological Survey
 University of Delaware
 Newark, DE 19716-7501
 302-831-2834
 delgeosurvey@udel.edu
 www.udel.edu/dgs