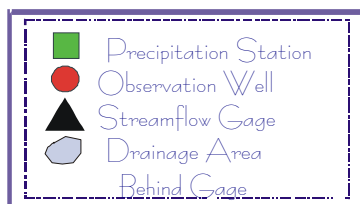
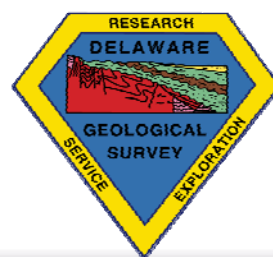
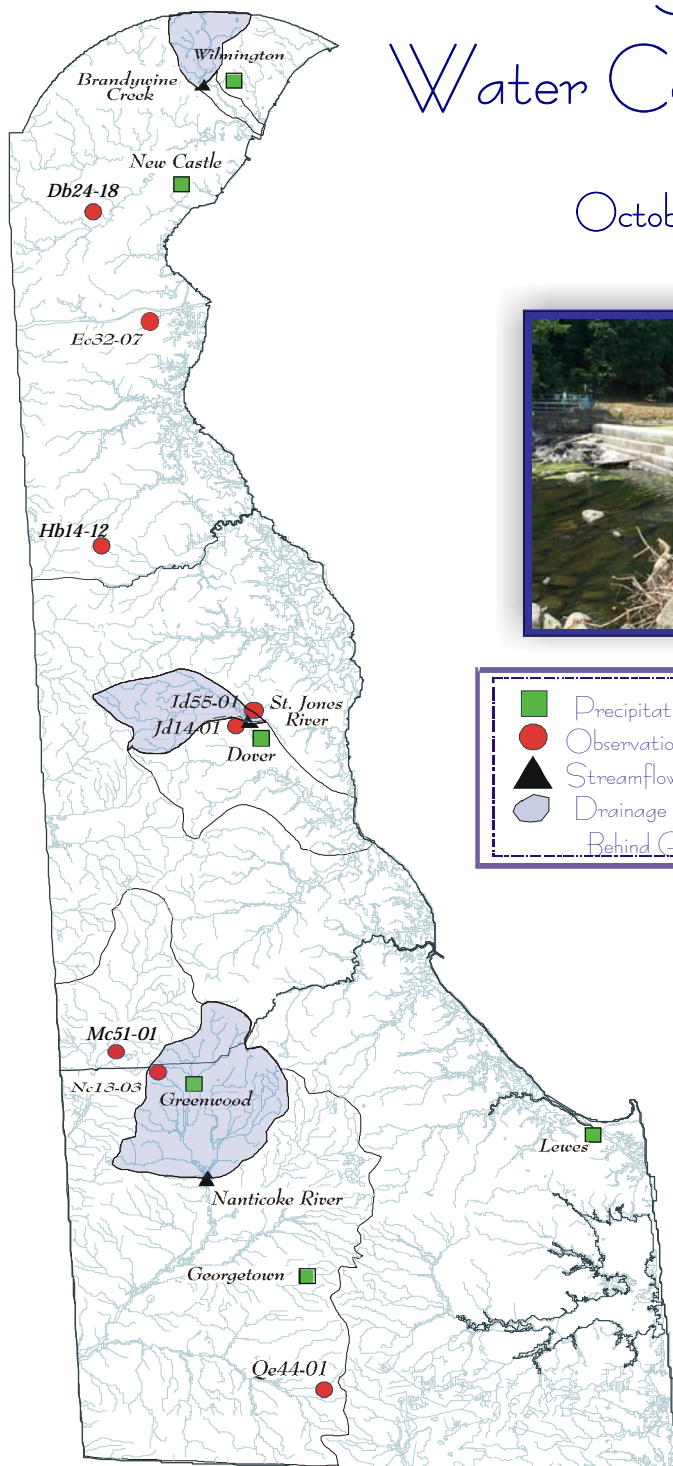


# DELAWARE GEOLOGICAL SURVEY

## Summary of Water Conditions in Delaware Water Year 2009 October, 2008 - August, 2009



Compiled by J. H. Talley and S. J. Baxter

### Acknowledgments

U. S. Geological Survey  
National Weather Service  
Delaware Department of Transportation  
Delaware State Climatologist  
University of Delaware  
City of Dover  
City of Lewes  
City of Wilmington  
Connie Swartzentruber

### Photos

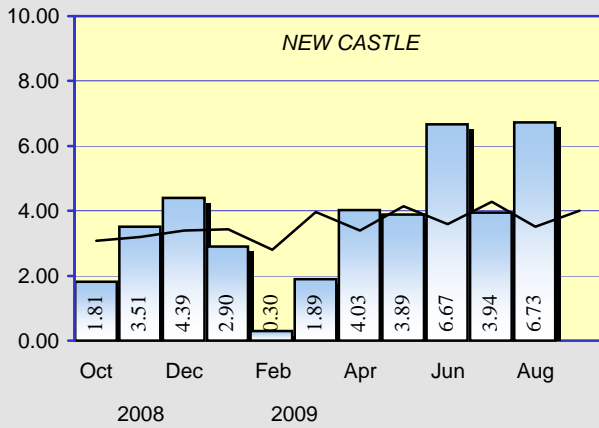
Brandywine Creek, drought of 2002  
Red Clay Creek, remnants of  
Tropical Storm Henri,  
September 15, 2003

Hydrography Digital Line Graph United States Geological Survey 1993  
Projection: UTM 18 Datum: NAD 83

Web Site: <http://www.udel.edu/dgs>

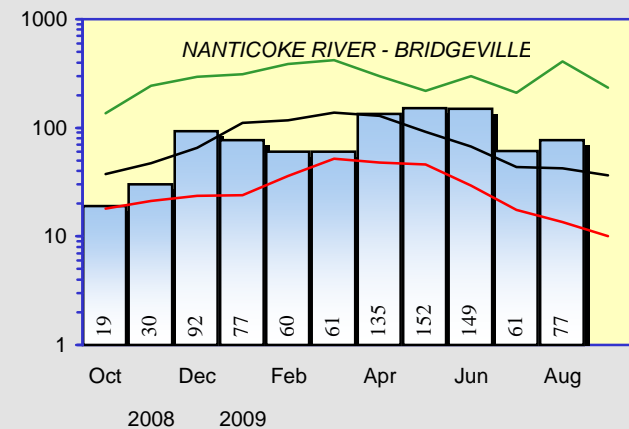
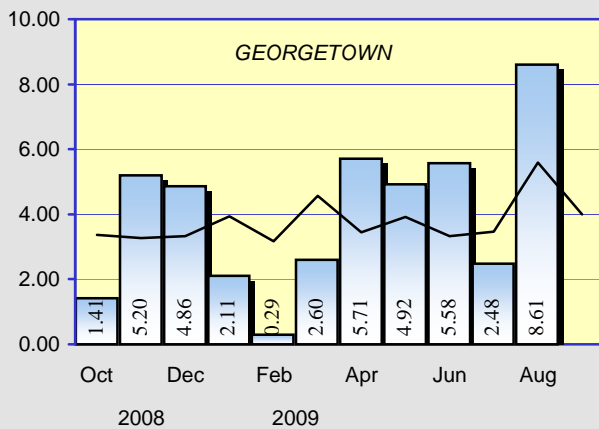
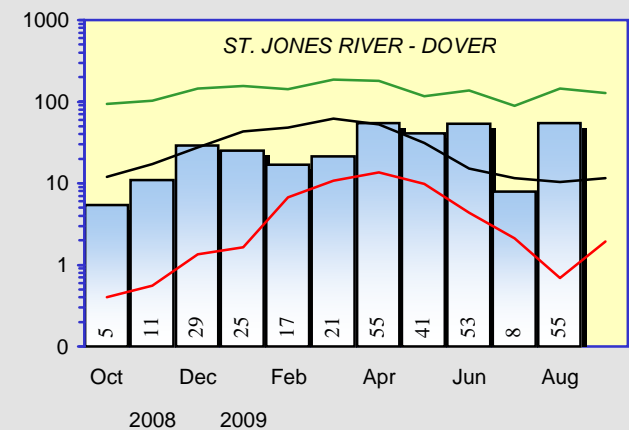
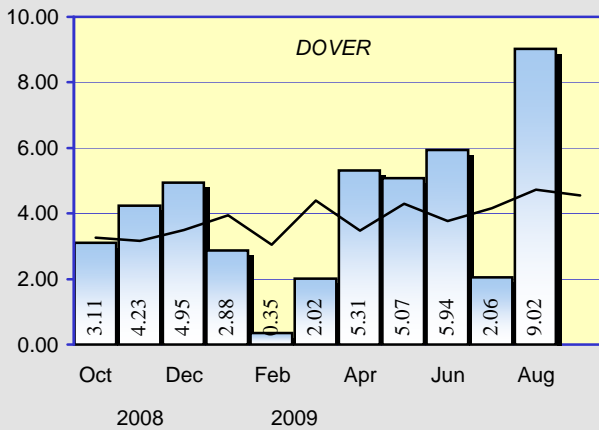
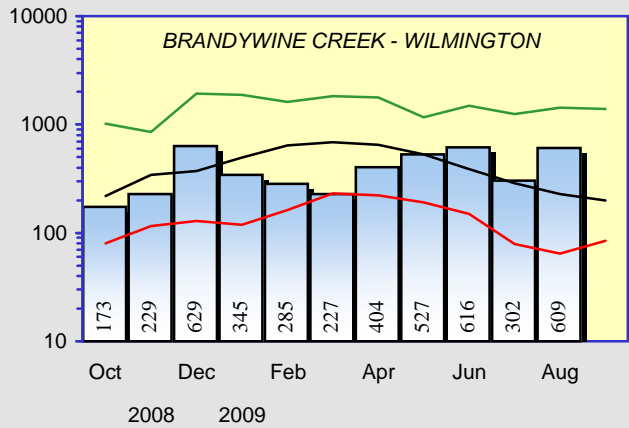
## PRECIPITATION



Monthly Total  
Measured in Inches


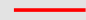
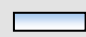



## STREAMFLOWS

Monthly Average - CFS  
(Provisional - Subject to Revision)

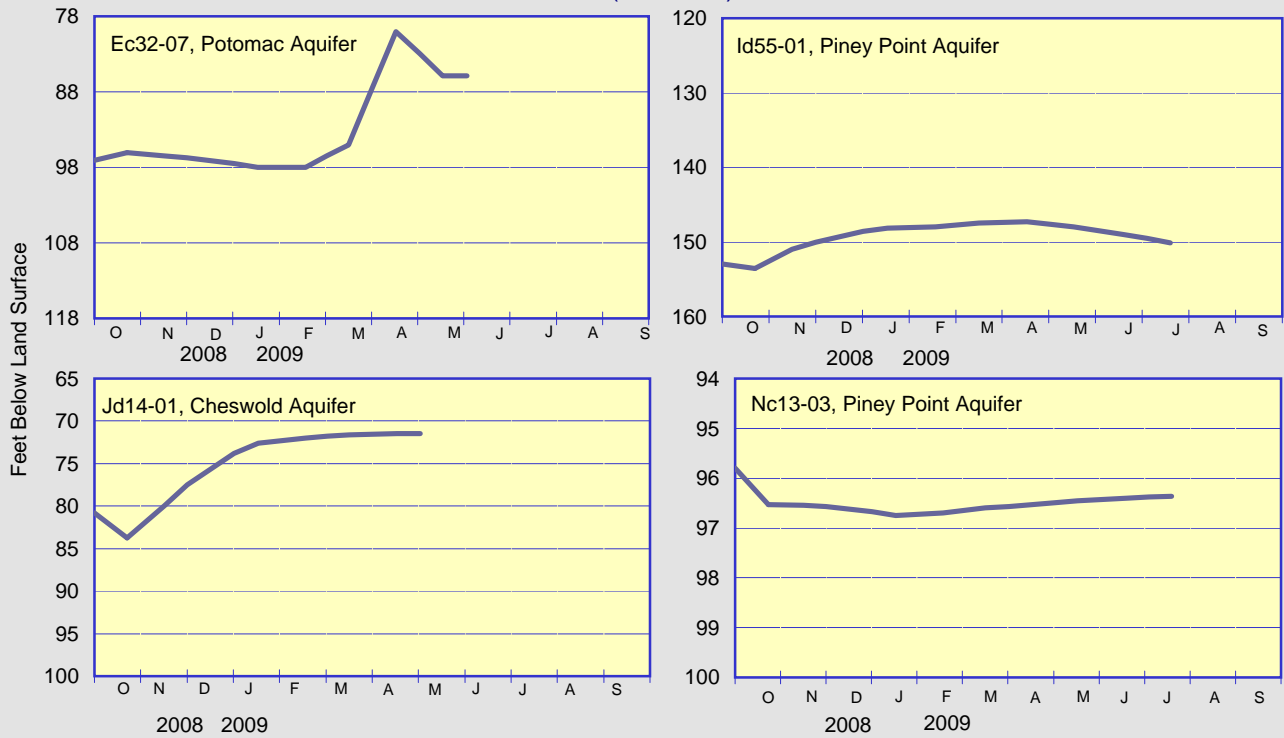


 Current monthly total  
 Long term average

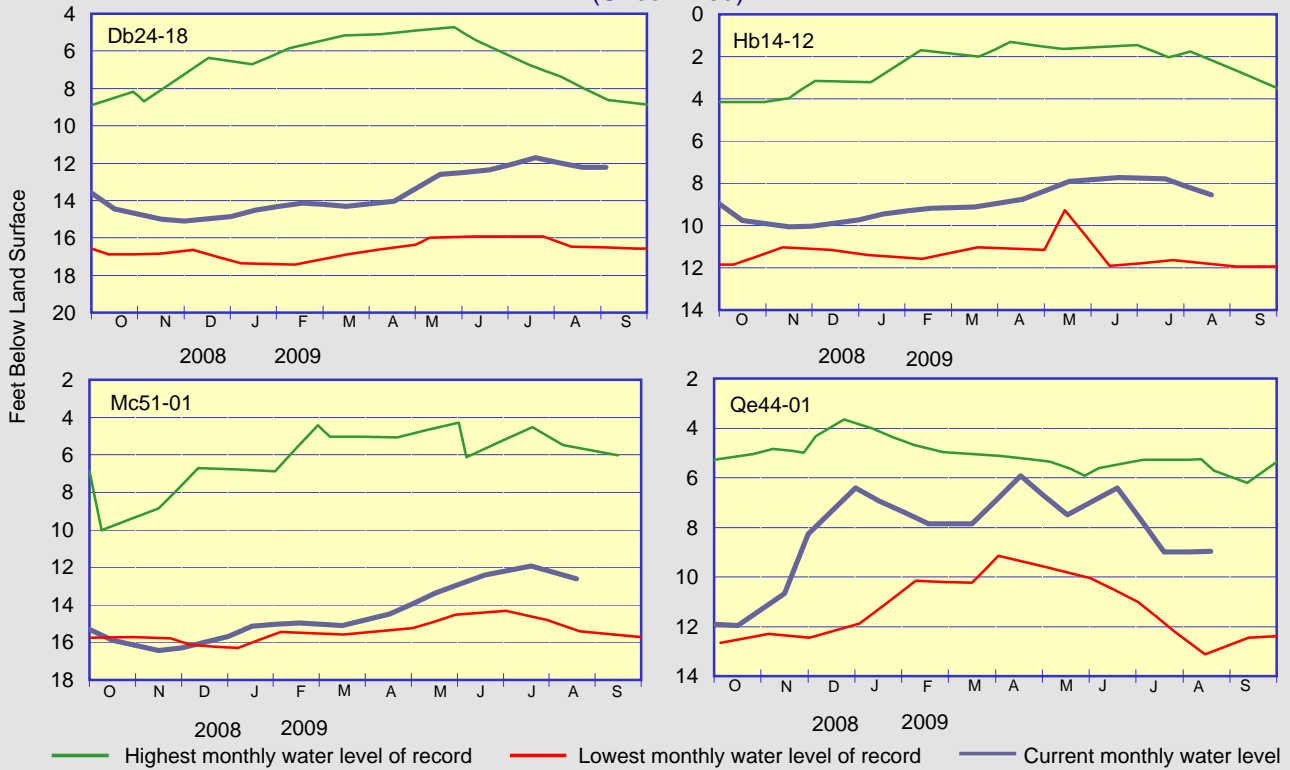
 Highest monthly mean discharge  
 Lowest monthly mean discharge  
 Current monthly mean discharge  
 Median monthly mean discharge

# GROUND-WATER LEVELS

## ARTESIAN WELLS (Confined)

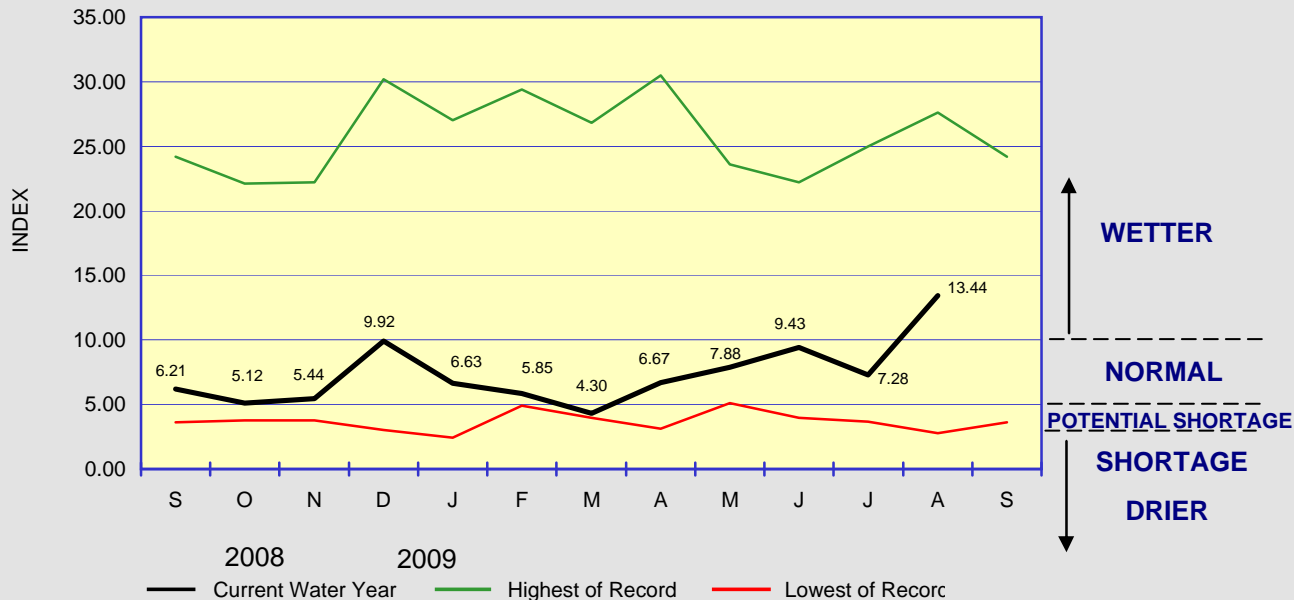


## WATER-TABLE WELLS (Unconfined)



## WATER CONDITIONS INDEX FOR NEW CASTLE COUNTY

The Water Conditions Index rose into the Wetter range during the month of August. Normal to above normal flows occurred on streams in all three counties due to above normal precipitation throughout the state. Groundwater levels remained relatively steady in all three counties.



Delaware Geological Survey  
University of Delaware  
Newark, DE 19716

*Summary of Water Conditions in Delaware* is published by the Delaware Geological Survey, a State agency established by an Act of the Delaware General Assembly in 1951 and organized as a unit of the University of Delaware.  
John H. Talley  
*Director and State Geologist*  
John H. Talley and Stefanie J. Baxter  
*Editors, Summary of Water Conditions in Delaware*

CHANGE OF ADDRESS?  
Send mailing label and your new address, and/or

REQUESTS FOR PUBLICATIONS to:  
Laura Wisk  
Delaware Geological Survey  
University of Delaware  
Newark, DE 19716-7501  
302-831-2834  
delgeosurvey@udel.edu  
www.dgs.udel.edu