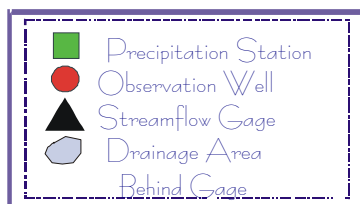
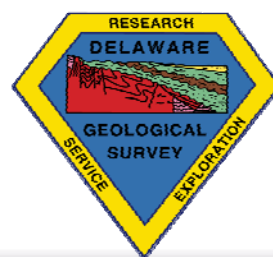
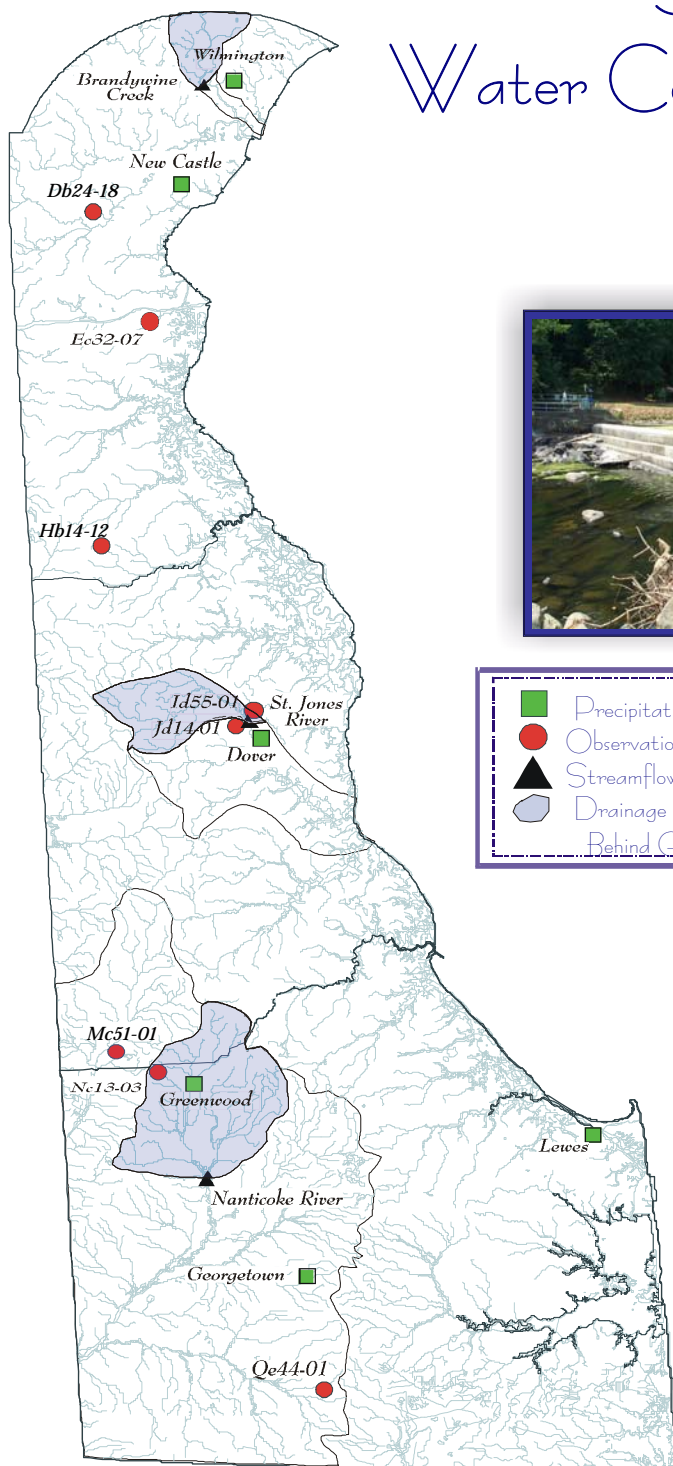


DELAWARE GEOLOGICAL SURVEY

Summary of Water Conditions in Delaware Water Year 2008 October, 2007



Compiled by J. H. Talley and S. J. Baxter

Acknowledgments

U. S. Geological Survey
National Weather Service
Delaware Department of Transportation
Delaware State Climatologist
University of Delaware
City of Dover
City of Lewes
City of Wilmington
Connie Swartzentruber

Photos

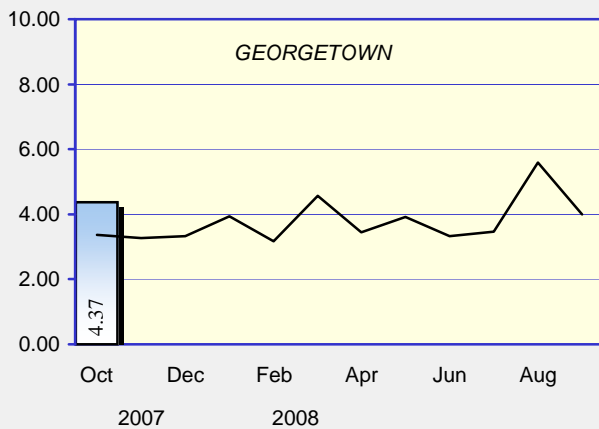
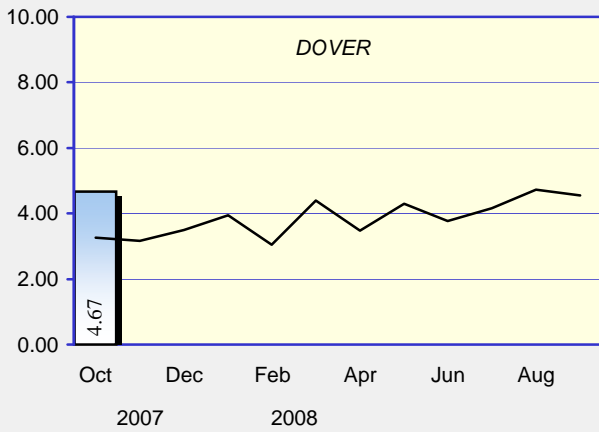
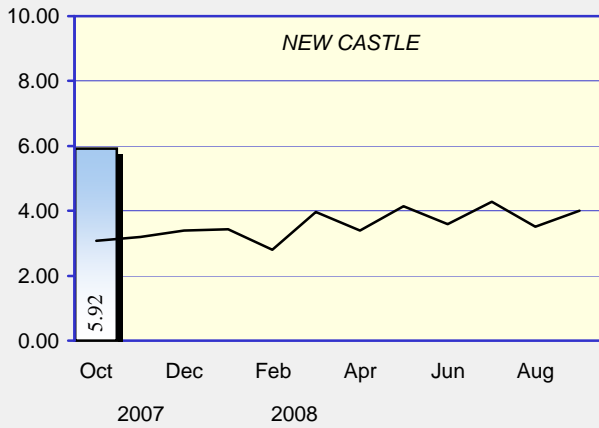
Brandywine Creek, drought of 2002
Red Clay Creek, remnants of
Tropical Storm Henri,
September 15, 2003

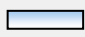

Hydrography Digital Line Graph United States Geological Survey 1993
Projection: UTM 18 Datum: NAD 83

Web Site: <http://www.udel.edu/dgs>

PRECIPITATION

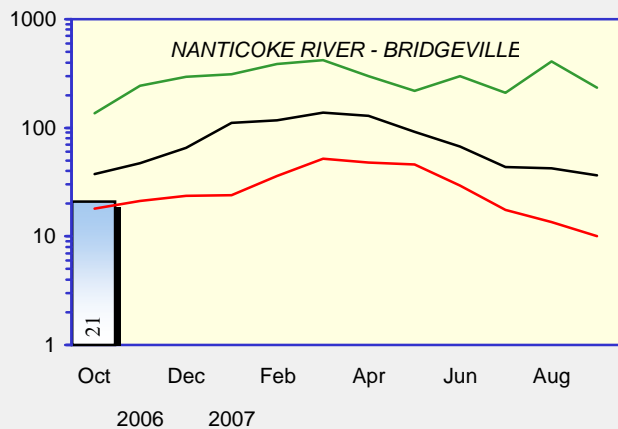
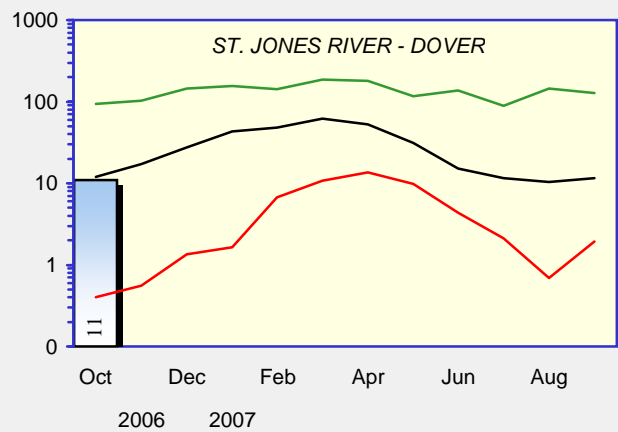
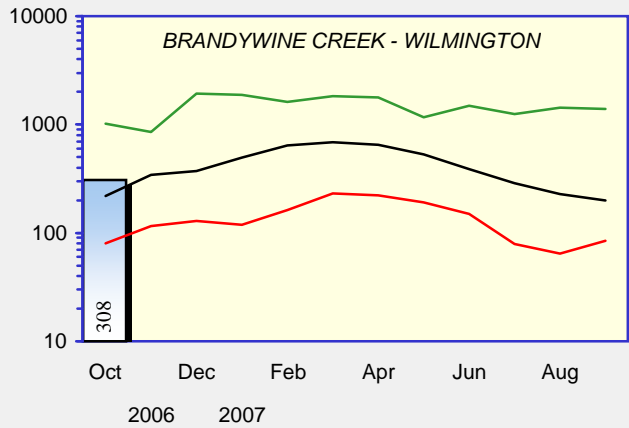
Monthly Total
Measured in Inches

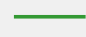
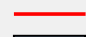
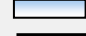



 Current monthly total
 Long term average

STREAMFLOWS

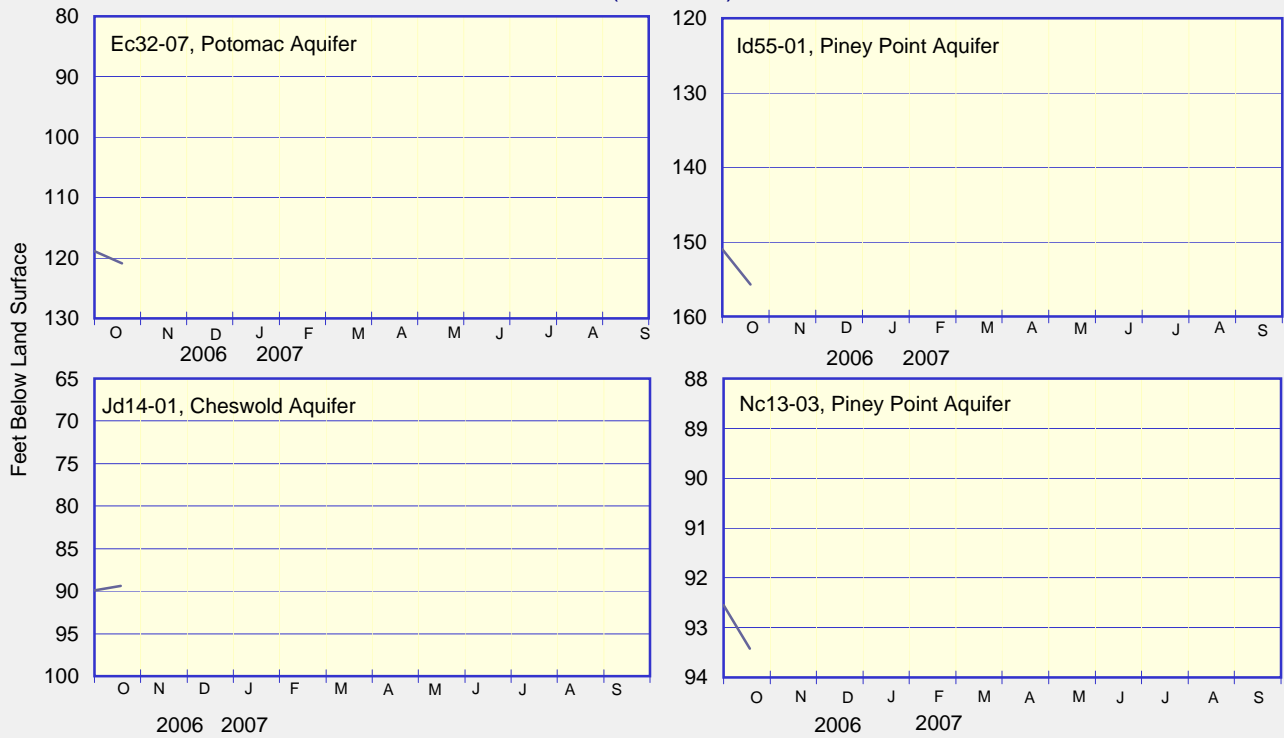
Monthly Average - CFS
(Provisional - Subject to Revision)



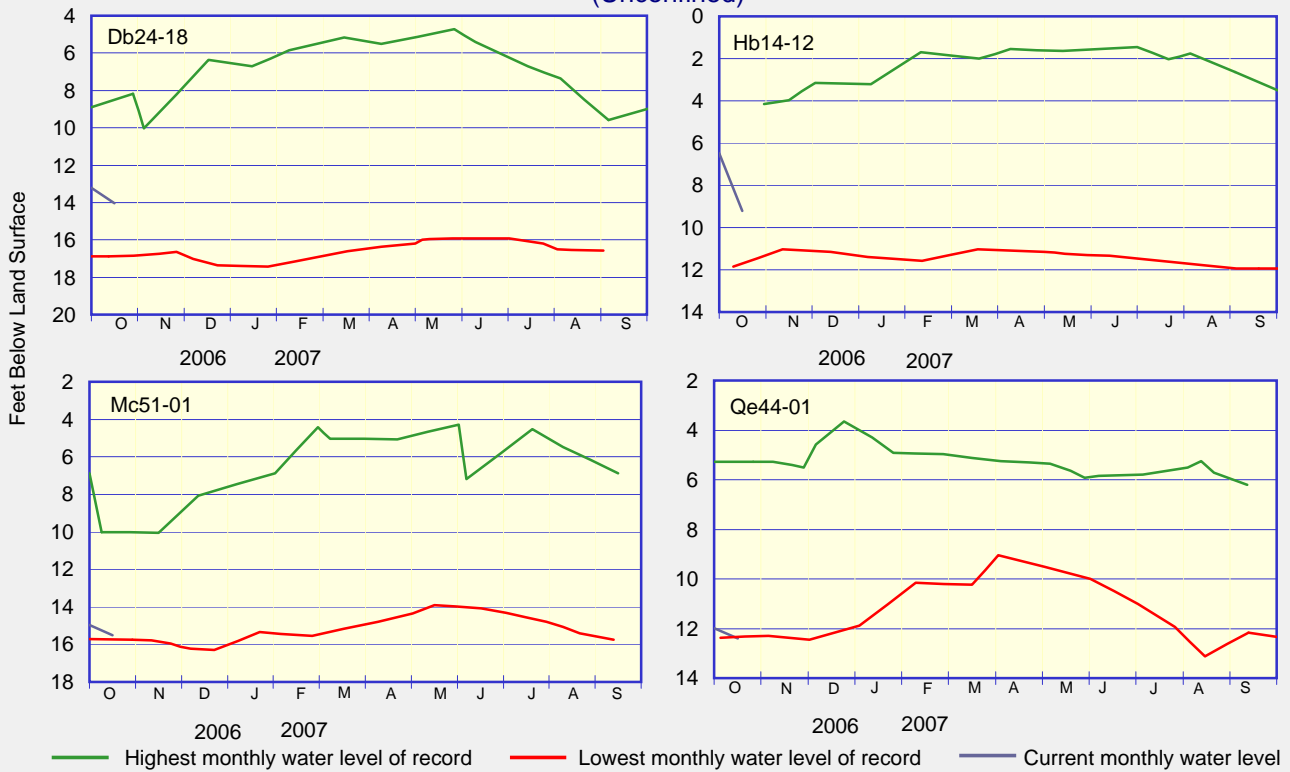
 Highest monthly mean discharge
 Lowest monthly mean discharge
 Current monthly mean discharge
 Median monthly mean discharge

GROUND-WATER LEVELS

ARTESIAN WELLS (Confined)

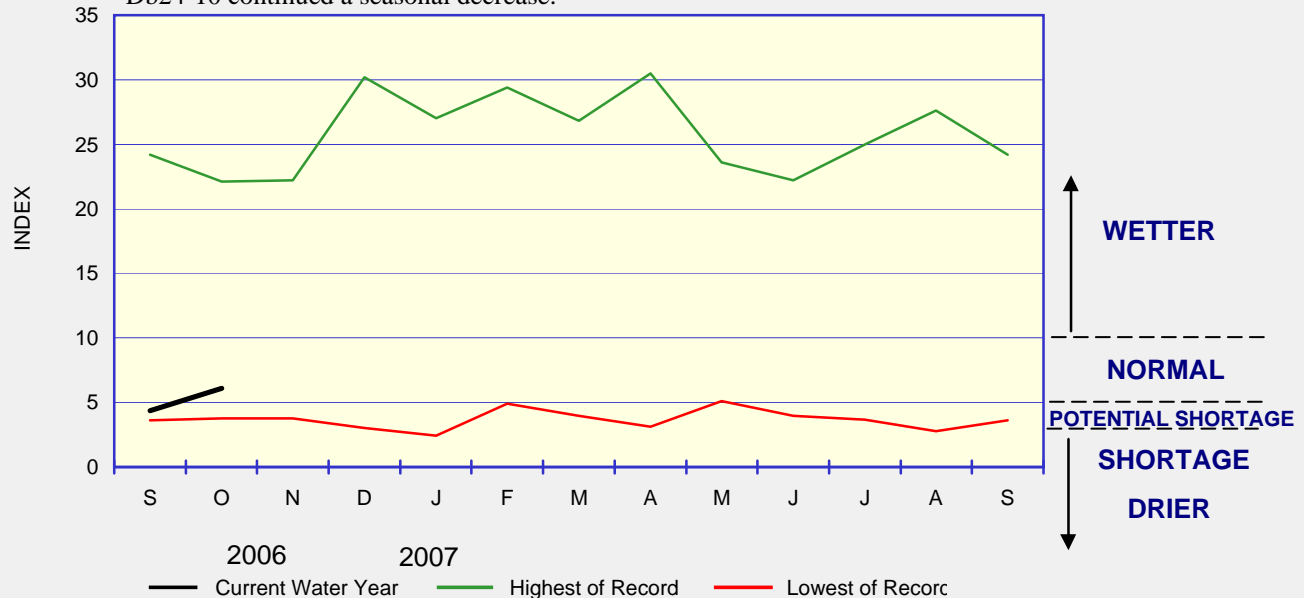


WATER-TABLE WELLS (Unconfined)



WATER CONDITIONS INDEX FOR NEW CASTLE COUNTY

The Water Conditions rose into the Normal range for the month of October due to above normal precipitation recorded in New Castle County. The Index had been declining since May due to below normal precipitation recorded during May, July, and September at Porter Reservoir and during May, June, July and September at the Wilmington Airport. Flows on the Brandywine River were above normal for the month of October. Water levels recorded in well Db24-10 continued a seasonal decrease.



Delaware Geological Survey
University of Delaware
Newark, DE 19716

Summary of Water Conditions in Delaware is published by the Delaware Geological Survey, a State agency established by an Act of the Delaware General Assembly in 1951 and organized as a unit of the University of Delaware.
John H. Talley
Director and State Geologist
John H. Talley and Stefanie J. Baxter
Editors, Summary of Water Conditions in Delaware

CHANGE OF ADDRESS?
Send mailing label and your new address, and/or

REQUESTS FOR PUBLICATIONS to:
Laura Wisk
Delaware Geological Survey
University of Delaware
Newark, DE 19716-7501
302-831-2834
delgeosurvey@udel.edu
www.udel.edu/dgs