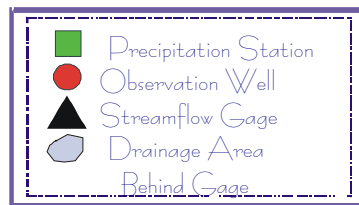
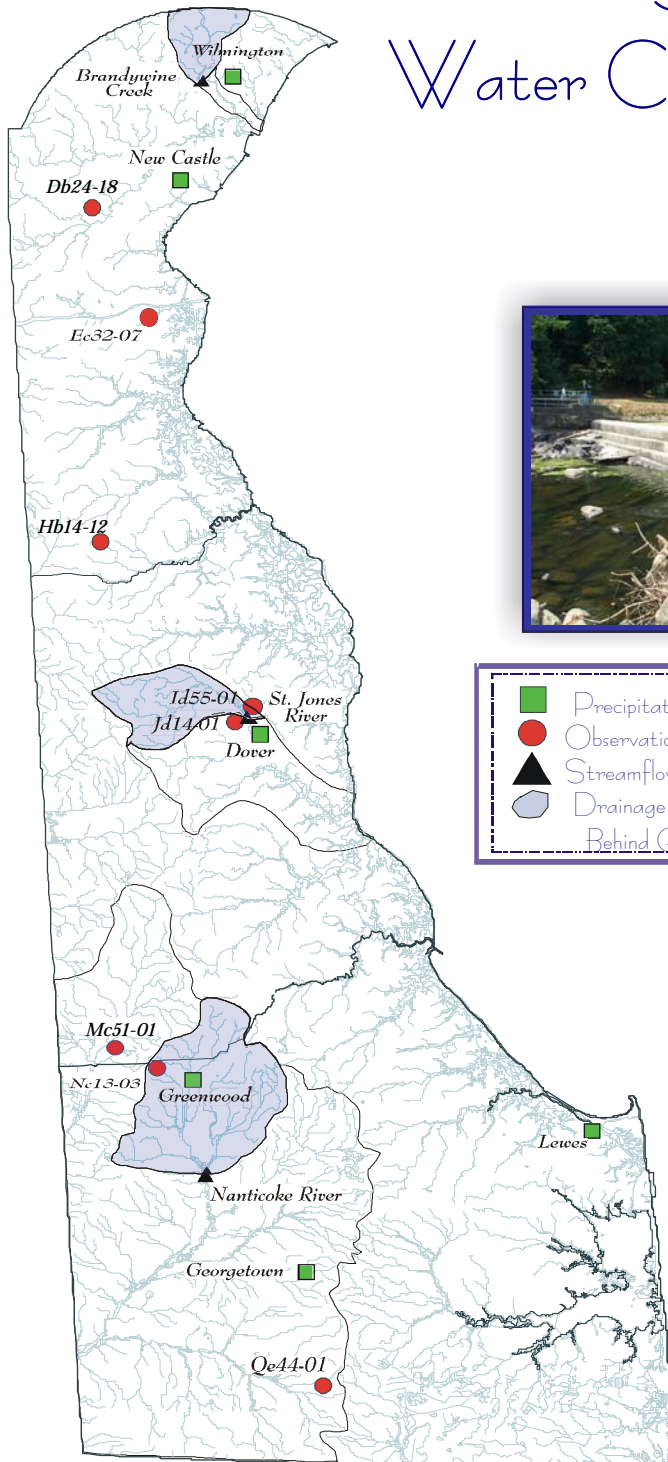


DELAWARE GEOLOGICAL SURVEY

Summary of Water Conditions in Delaware Water Year 2008 November, 2007



Compiled by J. H. Talley and S. J. Baxter

Acknowledgments
 U. S. Geological Survey
 National Weather Service
 Delaware Department of Transportation
 Delaware State Climatologist
 University of Delaware
 City of Dover
 City of Lewes
 City of Wilmington
 Connie Swartzentruber

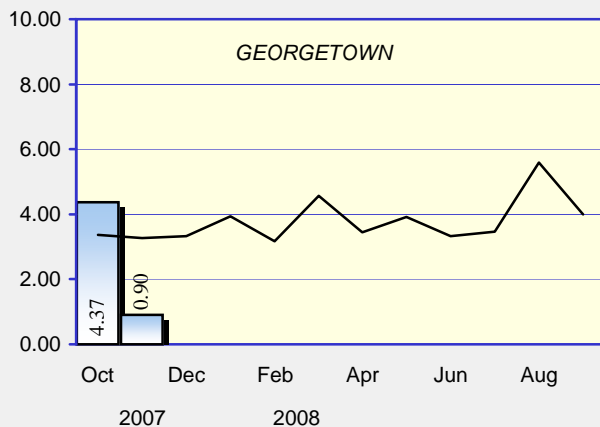
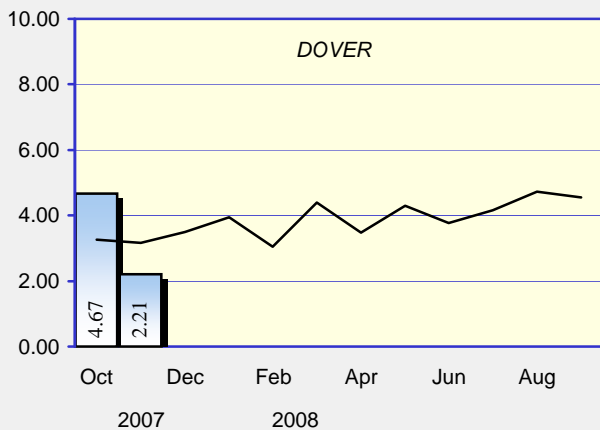
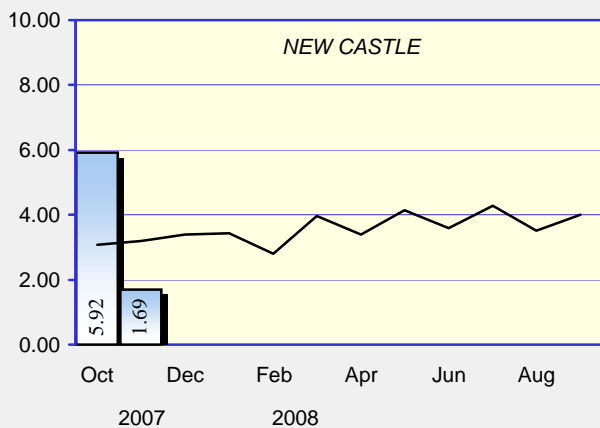
Photos
 Brandywine Creek, drought of 2002
 Red Clay Creek, remnants of
 Tropical Storm Henri,
 September 15, 2003

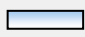

Hydrography Digital Line Graph United States Geological Survey 1993
 Projection: UTM 18 Datum: NAD 83

Web Site: <http://www.udel.edu/dgs>

PRECIPITATION

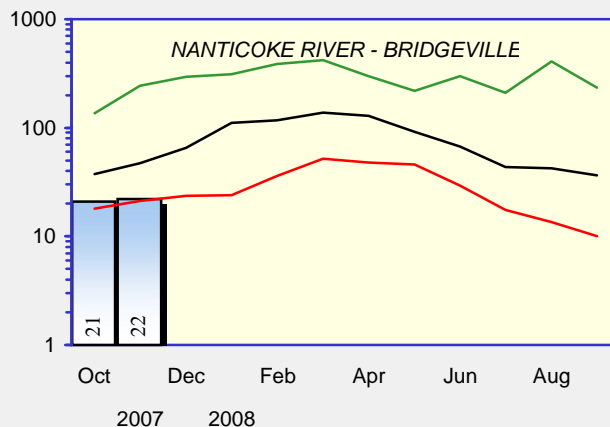
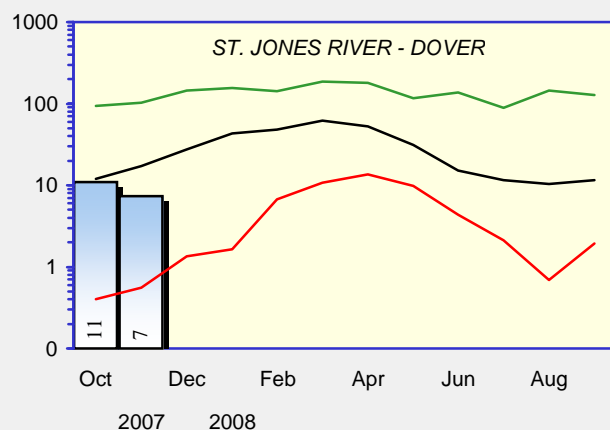
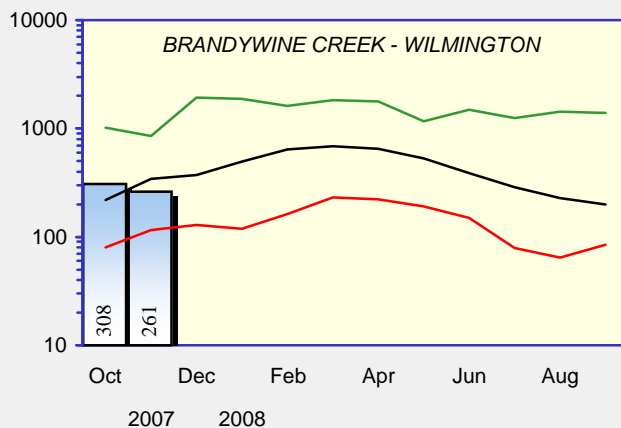
Monthly Total
Measured in Inches


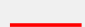
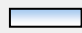


 Current monthly total
 Long term average

STREAMFLOWS

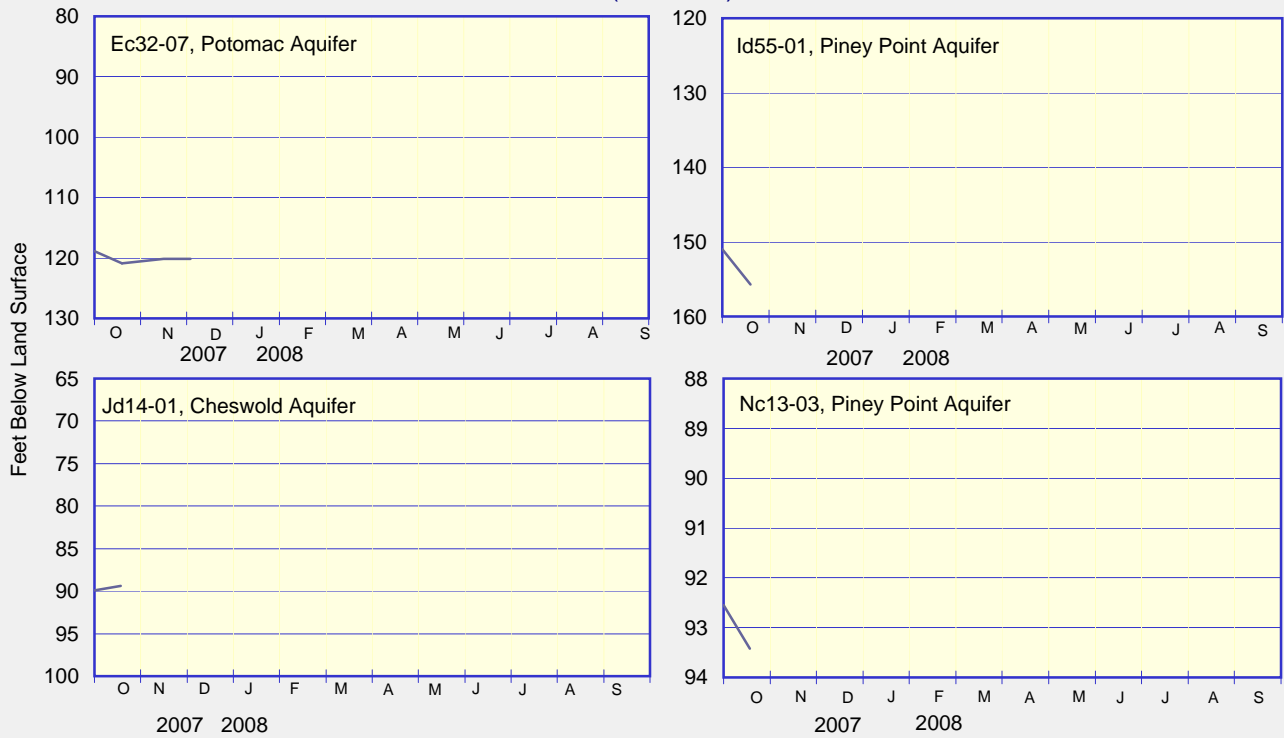
Monthly Average - CFS
(Provisional - Subject to Revision)



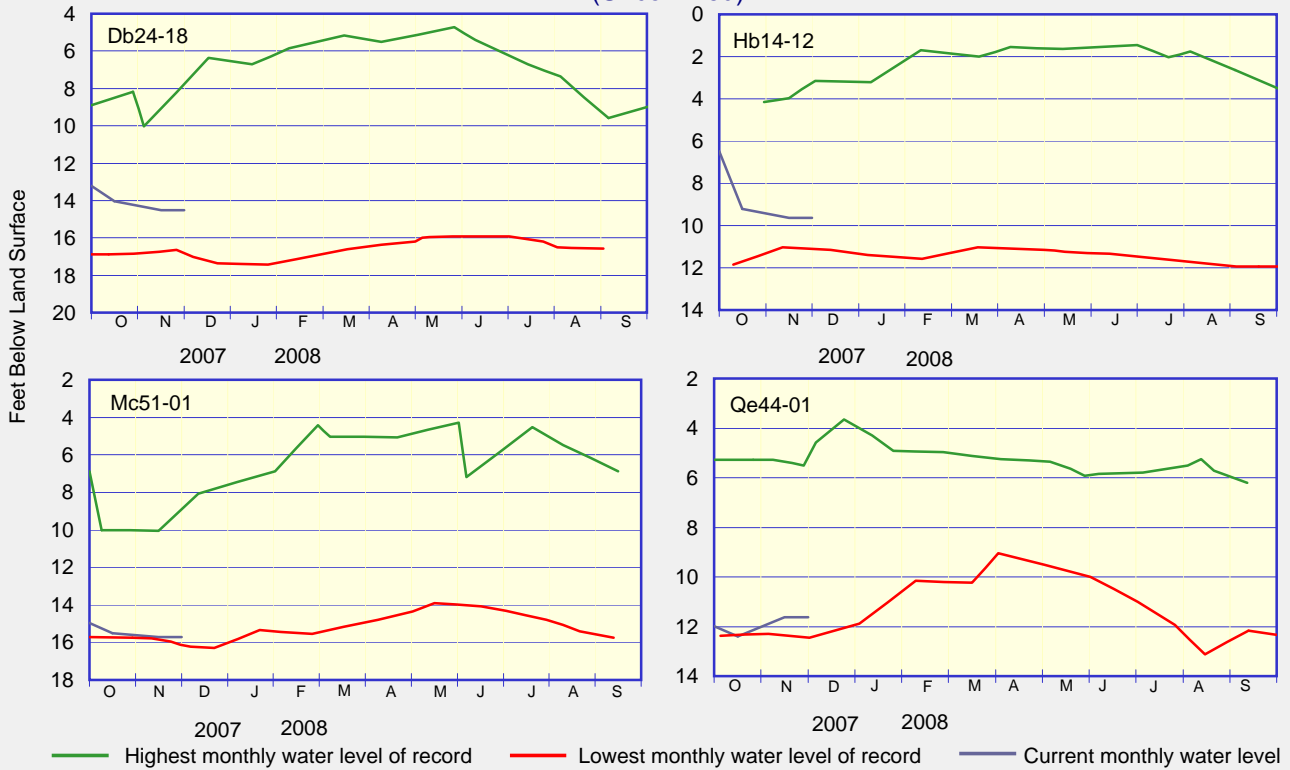
 Highest monthly mean discharge
 Lowest monthly mean discharge
 Current monthly mean discharge
 Median monthly mean discharge

GROUND-WATER LEVELS

ARTESIAN WELLS (Confined)

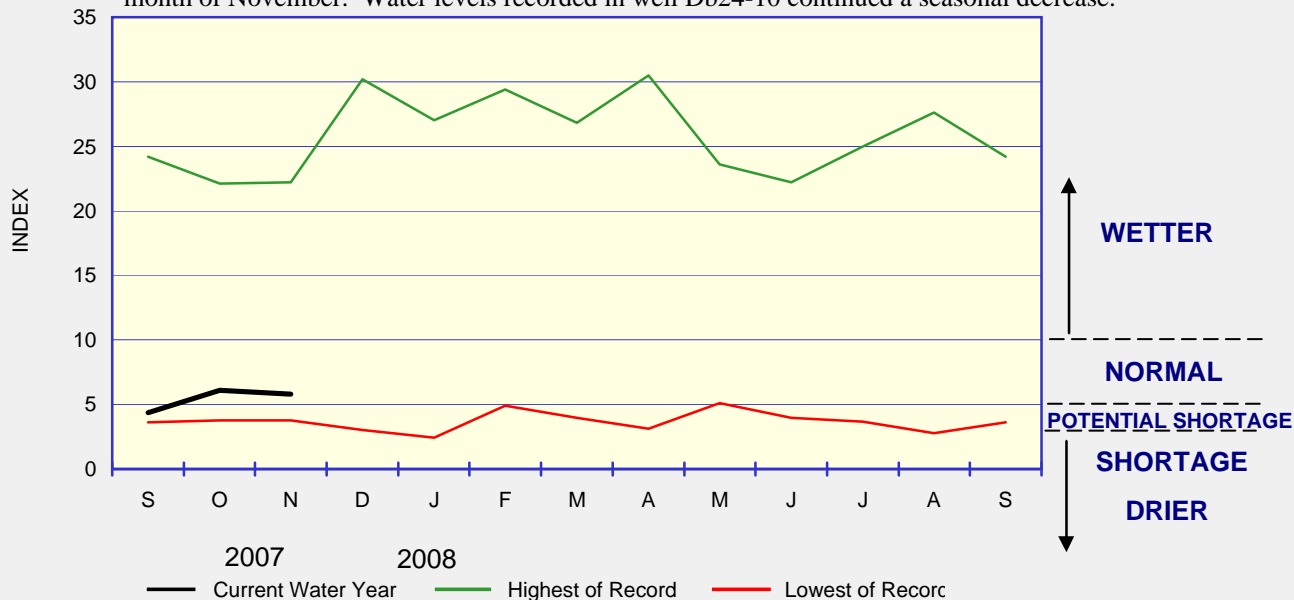


WATER-TABLE WELLS (Unconfined)



WATER CONDITIONS INDEX FOR NEW CASTLE COUNTY

The Water Conditions dipped slightly but remained in the Normal range for the month of November. The Index had been declining since May due to below normal precipitation recorded during May, July, and September at Porter Reservoir and during May, June, July and September at the Wilmington Airport. The Index rose in October due to above normal precipitation recorded in Wilmington. Flows on the Brandywine River were normal for the month of November. Water levels recorded in well Db24-10 continued a seasonal decrease.



Delaware Geological Survey
 University of Delaware
 Newark, DE 19716

Summary of Water Conditions in Delaware is published by the Delaware Geological Survey, a State agency established by an Act of the Delaware General Assembly in 1951 and organized as a unit of the University of Delaware.
 John H. Talley
Director and State Geologist
 John H. Talley and Stefanie J. Baxter
Editors, Summary of Water Conditions in Delaware

CHANGE OF ADDRESS?
 Send mailing label and your new address, and/or

REQUESTS FOR PUBLICATIONS to:
 Laura Wisk
 Delaware Geological Survey
 University of Delaware
 Newark, DE 19716-7501
 302-831-2834
 delgeosurvey@udel.edu
 www.udel.edu/dgs